



Runnymede Court | Lunedale Road, Dartford, DA2 6NA



Guide Price £160,000 to £170,000 Leasehold

**ROBINSON-JACKSON**  
Our service will *move* you

## Runnymede Court, Lunedale Road

GROUND FLOOR. Robinson Jackson are delighted to market this very well maintained two bedroom retirement apartment for the over 55s located in Runnymede Court on the popular Fleet Estate.

### Property Features

- Council Tax: B
- EPC Rating: C
- Ideally Located For Local Shops
- Ground Floor
- Versatile Accommodation (Bedroom Two Currently A Dining Room)
- Ideally Located For Darent Valley Hospital
- 70% Share
- South Facing Front Garden



## Interior

**Entrance Hall:** Double glazed entrance door. Coved ceiling. Electric radiator. Carpet. Cupboard housing electric fuse box. Emergency intercom. Large under stairs storage cupboard. Cupboard housing hot water cylinder.

**Lounge:** Double glazed window to front. Coved ceiling. Carpet. Electric radiator.

**Bedroom One:** Double glazed window to rear. Coved ceiling. Electric storage heater. Carpet. Built in bedroom furniture. Carpet.

**Bedroom Two:** Double glazed window to rear. Coved ceiling. Storage heater. Carpet.

**Bathroom:** Extractor fan. Coved ceiling. Vanity wash hand basin. Panel bath with shower attachment. Separate electric shower over. Low level WC. Electric towel rail. Wood effect laminate floor. Part tiled walls.

**Kitchen:** Double glazed window to rear. Coved ceiling. Stainless steel sink unit. Matching range of wall and base units. Complimentary work-surfaces. Space for fridge freezer. Space for cooker. Space for slim line dishwasher. Space for washing machine. Breakfast bar. Tiled splash back. Tiled floor. Electric heater.

## Exterior

Front Garden: Astro turf. South facing.

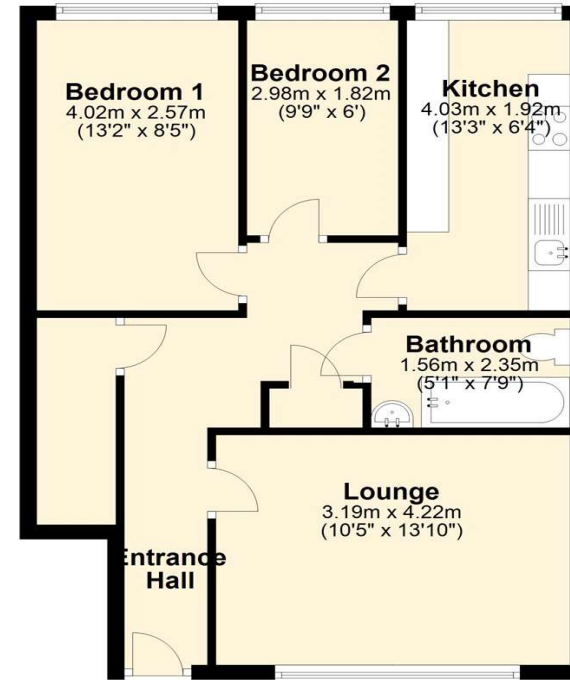
Communal Gardens.

Residents Parking.



## Ground Floor

Approx. 55.4 sq. metres (596.2 sq. feet)



Total area: approx. 55.4 sq. metres (596.2 sq. feet)

This Floorplan is for illustrative purposes only  
Plan produced using PlanUp.



## Property Location

Runnymede Court, Lunedale Road, Dartford, DA2 6NA



## Additional Information

Please note a 70% share of the property is for sale.

The property measures 56 square metres.

Built in 1988

Service Charge £2816.28 per annum

Lease remaining 64 years

Council Tax Dartford Band B

## Leasehold Information

Time remaining on lease: Approx. 64 years

Ground Rent: Not Available

Service Charge: £2,816 Per Annum

**FOR MORE INFORMATION  
CONTACT US TODAY.**

01322 281281

Robinson Jackson  
22 Market Street,  
Dartford,  
Kent DA1 1EZ

[dartford@robinson-jackson.com](mailto:dartford@robinson-jackson.com)

