



Meadowview Road
Catford
SE6 3NL

Leasehold



Council Tax: B
EPC Rating: TBC

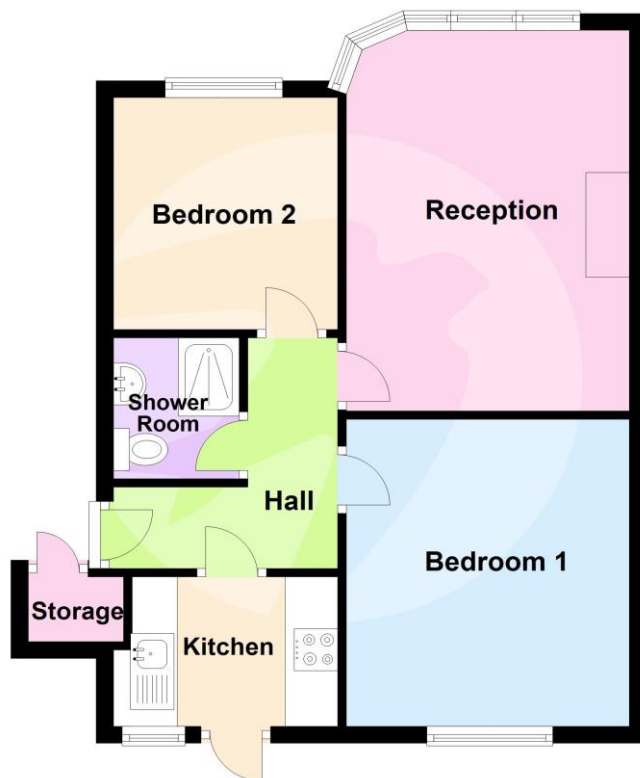
Ground floor purpose-built maisonette located in a popular road within a short walk of Lower Sydenham station. Benefitting from two bedrooms, 15' Lounge and private rear garden. The property requires modernisation throughout and is being sold with no onward chain and has a 80-year lease remaining.

- Two Double Bedrooms
- 15' Reception Room
- No Onward Chain
- Ground Floor Maisonette
- Requires Modernisation
- 80 Year Lease

Guide Price £200,000-£225,000

ROBINSON-JACKSON
Our service will *move* you

Ground Floor



FOR MORE INFORMATION
CONTACT US TODAY.

020 8698 1234
Robinson Jackson
87 Rushey Green,
Catford,
London SE6 4AF
catford@robinson-jackson.com

Interior

Porch UPVC front door with opaque inserts, storage cupboard housing boiler.

Hall Wooden front door, radiator, carpet, storage cupboard.

Lounge 3.2 x 4.83m into bay (10'6" x 15'10" into bay) Double glazed bay window to front, radiator, carpet, gas fire.

Kitchen 4.3m x 2.13m max (14'1" x 7' max) Double glazed window and door to rear garden, range of wall and base units with work surface over, stainless steel sink unit, plumbing for washing machine, spaces for appliances, vinyl flooring, radiator, tiled splash back.

Bedroom 1 3.2m x 3.23m (10'6" x 10'7") Double glazed window to front, radiator, carpet.

Bedroom 2 2.3m x 3.05m (7'7" x 10') Double glazed window to front, radiator, carpet.

Bathroom Double glazed opaque window to side, shower cubicle with thermostatic mixer shower, pedestal wash hand basin, low level w.c., vinyl flooring, part tiled walls, radiator.

Exterior

Front Garden Mainly laid to lawn

Rear Garden 9.14m (30') Mainly laid to lawn.

Leasehold Information

Time remaining on lease: Approx. 80 years and 7 months

Ground Rent: £50 per annum*

Service Charge: TBC per annum*

(*To be verified by vendor's solicitor)

Location

Catford is growing in popularity among commuters as journeys from its two mainline stations can take as little as 10 minutes to Central London.

The Broadway Theatre is an impressive Art Deco building, with a regular programme of shows and events. Catford's other premium attraction is Mountsfield Park – one of London's best open spaces and home of the annual People's Day. Catford's Black Cat sculpture remains a well-loved landmark.

Additional Information

Local Authority: London Borough of Lewisham

Council Tax: Band B (£1,413 pa)