



Queensthorpe Road | London, SE26 4PH

 5  2  1 Offers in excess of £650,000 Leasehold

**ROBINSON-JACKSON**  
Our service will *move* you



# Queensthorpe Road, London

Wonderful first floor split level period conversion flat offered chain free with five double bedrooms, long lease, ample storage and access to loft set within a highly desirable location on the prestigious Thorpe Conservation area, excellently located for Sydenham Station, conveniently located for High Street and the award winning Mayow Park

## Property Features

- Council Tax: C
- EPC Rating: TBC
- Five Double Bedrooms
- Period Conversion Flat
- Chain Free
- Leasehold
- Long Lease
- First Floor
- Split Level
- Two Bathrooms
- Access to loft
- Ample Storage



# Interior

## Communal Entrance

**Entrance Hall** Double glazed windows to front and side, parquet flooring, radiator

**Lounge** Single glazed windows to front and rear, carpet, radiator

**Kitchen** Single glazed windows to front and side, range of wall and base units, laminate work surface, stainless steel sink and drainer, integrated stainless steel oven and hob, extractor, space for fridge freezer, plumbed for washing machine, wood flooring, radiator

**Master Bedroom** Single glazed window to front and side, carpet, radiator

**Bedroom Two** Single glazed windows to front, carpet, radiator

**Bedroom Three** Single glazed windows to front and side, carpet, radiator

**Bedroom Four** Single glazed window to front, carpet, radiator

**Bedroom Five** Single glazed windows to rear, wood flooring, radiator

**Bathroom** Single glazed windows to rear, panelled bath, shower screen, wash hand basin, low flush wc, laminate flooring, heated towel rail

**Shower Room** Single glazed windows to front and rear, low flush wc, walk in shower cubicle, wood flooring, heated towel rail

## Leasehold Information

Time remaining on lease: 950 years

Ground Rent: £100 per annum

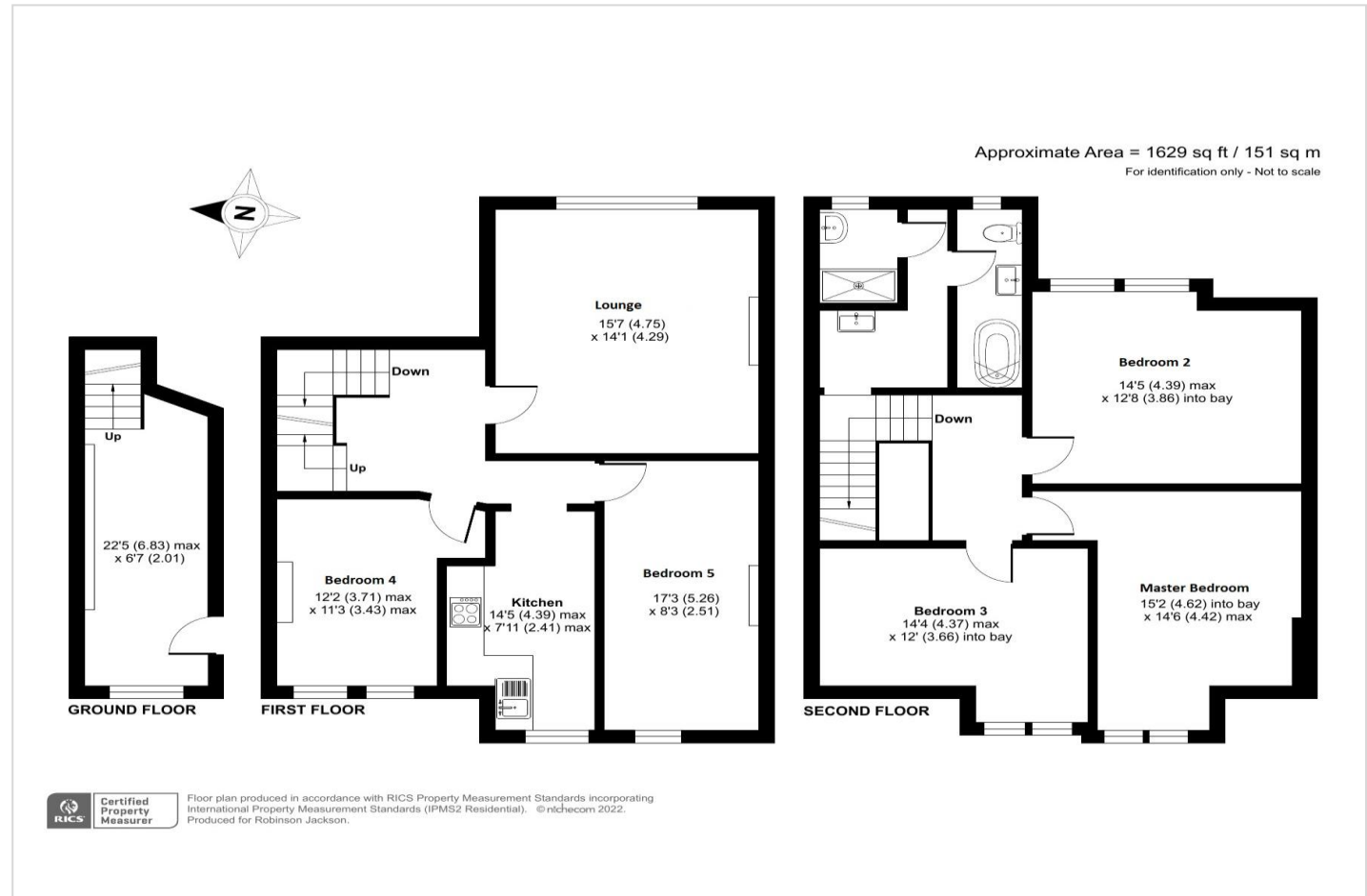
Service Charge: Not Applicable

## Additional Information

Situated in the prestigious Thorpe Conservation area

Excellent location for Sydenham Station

Conveniently located for High Street and the award winning Mayow Park

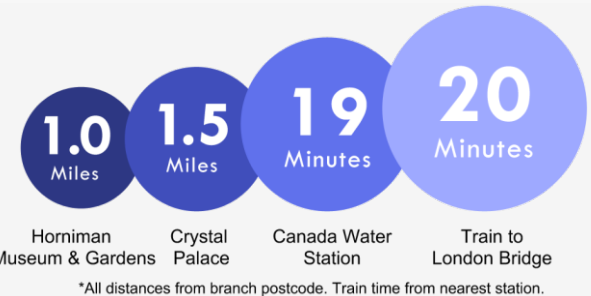






## Property Location

Queensthorpe Road, London, SE26 4PH



**FOR MORE INFORMATION  
CONTACT US TODAY.**

020 8776 6660  
Robinson Jackson  
256 Kirkdale,  
Sydenham,  
London SE26 4NL  
[sydenham@robinson-jackson.com](mailto:sydenham@robinson-jackson.com)



These particulars do not form part of an offer or contract and must not be relied upon as statements or representation of fact. Any areas, measurements, journey times or distances are approximate. The text, images, photographs and plans are for guidance only and are not necessarily comprehensive. It should not be assumed that the property has all necessary planning, building regulation or other consents and we have not tested any services, equipment or facilities. References to tenure are based on information supplied by the seller. Buyer should verify all information themselves by inspection or otherwise prior to a legal commitment to purchase. Photos and images are subject to copyright.