

Eltham Road
 Lee
 SE12 8UE
 Leasehold

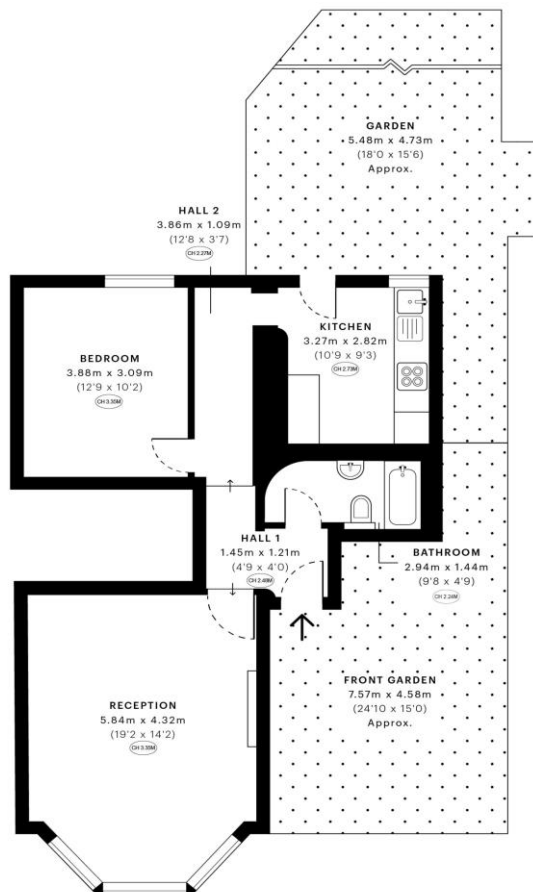
One bedroom ground floor Victorian conversion situated a short walk from Lee and Kidbrooke Station. This charming property comprises of entrance hall, large reception with space for dining, newly fitted kitchen with direct access to communal gardens, bathroom and a double bedroom. Further benefits include original wooden floorboards, original ornate working fireplace and off street parking.



Offers in excess of £350,000

Council Tax: C
 EPC Rating: E

ROBINSON-JACKSON
 Our service will *move* you



**FOR MORE INFORMATION
CONTACT US TODAY.**

020 8297 8777

Robinson Jackson
27 Lewis Grove,
Lewisham,
London, SE13 6BG

lewisham@robinson-jackson.com



Location

Bordered by popular Blackheath to the north and Bromley to the south, and with plenty of green spaces, Lee, Hither Green and Grove Park all offer a more affordable option for young families.

Trains from Lee reach London Bridge in 13 minutes, and in a mere 10 minutes from Hither Green, with easy access to towns such as Sidcup, Gravesend and Dartford in the opposite direction. Nearby Lewisham also offers access to the DLR, indoor shopping centre and a daily street market, a surprising amount of green space and restaurants serving world cuisine.

Leasehold Information

Time remaining on lease: 112 years*

Service Charge: £1,300 per year*

Ground Rent: £100 per year*

(*to be verified by Vendors Solicitor)

Other Information

Local Authority: Royal Borough of Greenwich

Council Tax: Band C (£1,520 pa)

EPC Rating: E

