



Ivy Court, Christopher Close | Blackfen, Sidcup, DA15 8PU



Guide Price £325,000-£350,000

Leasehold

**ROBINSON-JACKSON**  
Our service will *move* you



# Ivy Court, Christopher Close, Blackfen

A boutique first floor luxury high specification apartment with an array of quality fittings and stylish interiors. Located in the borough of Bexley with excellent facilities and transport links.

## Property Features

- Council Tax: C
- EPC Rating: B
- First Floor Apartment
- Two Bedrooms En Suite to Master Bedroom
- Open Plan Living Accommodation
- Balance of 10 Year International Construction Warranty
- Video Entry System
- Communal Gardens
- Allocated Parking



**Entrance Hall** 5.92m x 1.04m (19'5" x 3'5") Entrance door to side, inset spotlights, entry phone system, built in storage cupboard, radiator, laminate flooring.

**Lounge/Diner** 4.14m x 1.17m (13'7" x 3'10") Double glazed full length window to side, two double glazed full length windows to front, inset spotlights, radiator, laminate flooring, open plan to:

**Kitchen** 2.64m x 2m (8'8" x 6'7") Double glazed window to side, matching range of wall and base units incorporating cupboards, drawers and worktops, stainless steel sink unit with drainer and mixer tap, integrated fridge/freezer, oven and hob with extractor hood above, extractor fan, laminate flooring.

**Bedroom One** 4.14m x 2.77m (13'7" x 9'1") Double glazed window to rear, inset spotlights, radiator, carpet.

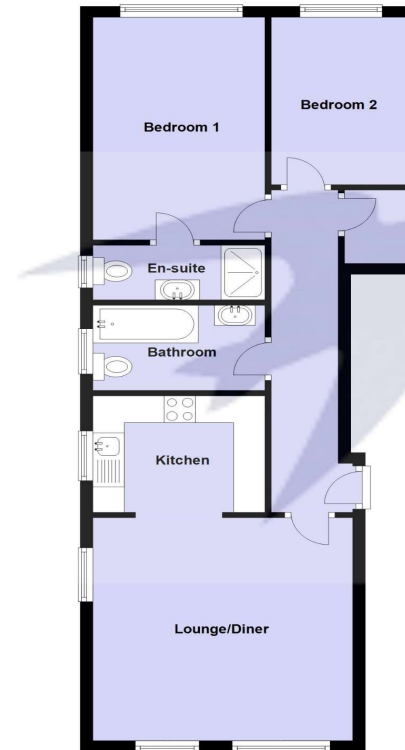
**En Suite Bathroom** 2.64m x 0.97m (8'8" x 3'2") Double glazed frosted window to side, enclosed shower cubicle, vanity wash hand basin, low level WC, chrome heated towel rail, part tiled walls, ceramic tiled flooring.

**Bedroom Two** 3.1m x 2.34m (10'2" x 7'8") Double glazed window to rear, radiator, carpet.

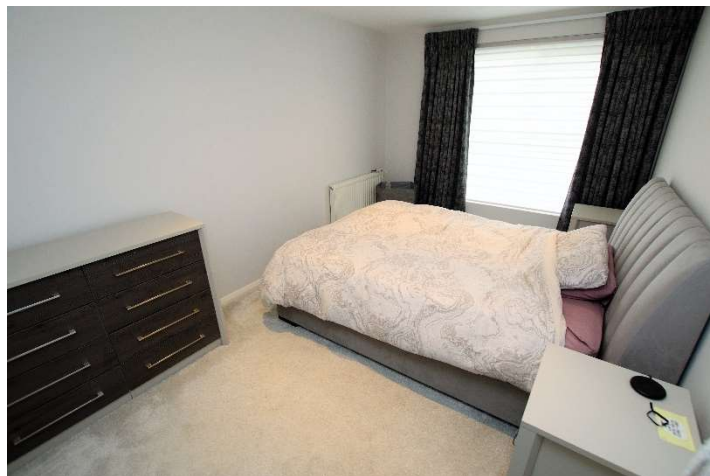
**Bathroom** 2.64m x 1.57m (8'8" x 5'2") Double glazed frosted window to side, panelled bath, vanity wash hand basin, low level WC, chrome heated towel rail, part tiled walls, ceramic tiled flooring.

**Parking** Allocated parking bay to rear.

## First Floor



For Illustration Only  
Plan produced using PlanUp.

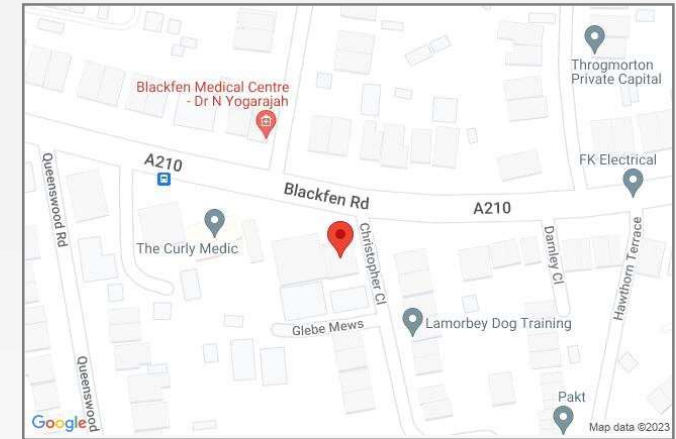






## Property Location

Christopher Close, Blackfen, Sidcup, DA15 8PU



## Leasehold Information

Unexpired term of lease: Approximately 147 years

Original start and lease term: November 2020 for 150 years

Current ground rent: Approximately £300

Current service charge: Approximately £1,200

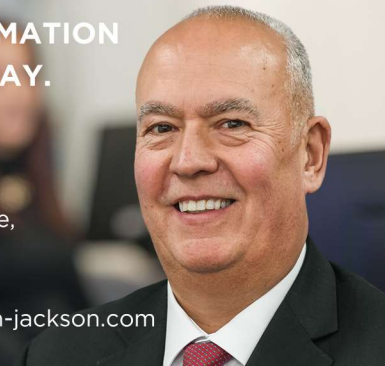
Next ground rent review: 20th May 2045 £500

All the above needs to be verified by your solicitor.



**FOR MORE INFORMATION  
CONTACT US TODAY.**

020 8298 0500  
Robinson Jackson  
1 & 2 Wellington Parade,  
Blackfen,  
DA15 9NB  
tony.hodges@robinson-jackson.com



These particulars do not form part of an offer or contract and must not be relied upon as statements or representation of fact. Any areas, measurements, journey times or distances are approximate. The text, images, photographs and plans are for guidance only and are not necessarily comprehensive. It should not be assumed that the property has all necessary planning, building regulation or other consents and we have not tested any services, equipment or facilities. References to tenure are based on information supplied by the seller. Buyer should verify all information themselves by inspection or otherwise prior to a legal commitment to purchase. Photos and images are subject to copyright.