



Mitchell Close | Belvedere, DA17 6AA



3



1



1

Asking Price £350,000

Freehold

**ROBINSON-JACKSON**  
Our service will *move* you



## Mitchell Close, Belvedere

Call today to view this three bedroom terraced home situated only a short walk from local schools, Franks Park and Belvedere train station. Ideal for any first time buyer or buy to let investor.

### Property Features

- Three bedrooms
- 26'2 x 13'1 Through lounge
- Ground floor bathroom
- Opposite local school
- Close to Belvedere train station
- Viewing advised





## Interior

**Entrance porch** UPVC door to front, carpet

**Lounge** 7.98m x 4m (26'2" x 13'1") Half UPVC half double glazed door to front, double glazed window to front, double glazed window to rear, radiator, storage cupboard, wood laminate flooring

**Kitchen** 3.48m x 2.6m (11'5" x 8'6") Double glazed window to side, wall and base units, oven, ceramic sink with mixer tap, space for washing machine, space for fridge/freezer, part tiled walls, tiled floor

**Lobby** Double glazed door to side, tiled floor, part tiled walls

**Ground floor bathroom** Two double glazed frosted windows to rear, low level wc, vanity wash hand basin with mixer tap, panelled bath with mixer tap and shower attachment, heated towel rail, tiled walls and floor

**Landing** Carpet, access to loft

**Bedroom 1** 4.17m x 3.56m (13'8" x 11'8") Two double glazed windows to front, radiator, cast iron fireplace, alcove cupboard

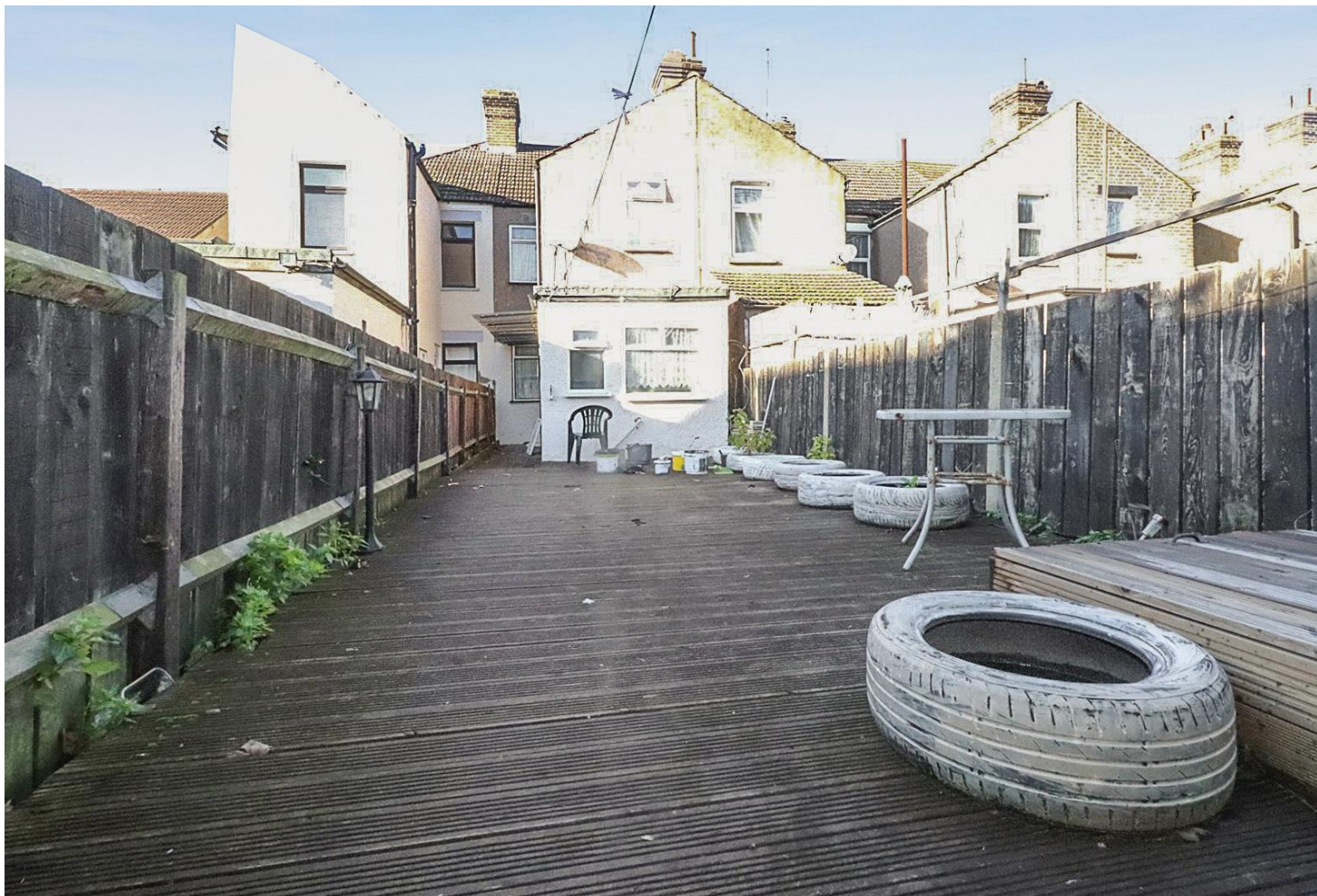
**Bedroom 2** 3.89m x 2.44m (12'9" x 8') Double glazed window to rear, radiator, carpet

## Exterior

**Garden** Decked, outside tap, outbuilding with power

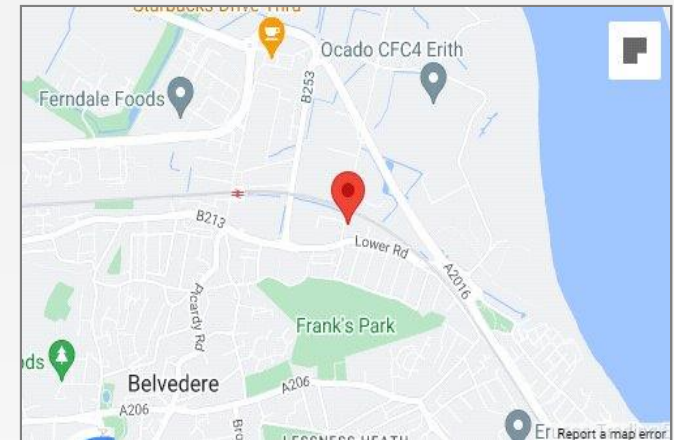






## Property Location

Mitchell Close, Belvedere, DA17 6AA



## Additional Information

At the heart of Belvedere is Nuxley Village – where you'll find shops, pubs, restaurants and the Robinson Jackson branch. Explore a little further and you'll find Lesnes Abbey, with its historic monastic ruins and formal gardens, and Bostall Woods with its protected bluebell fields and ancient trees.

Belvedere residents will be a manageable walk or one stop on the train line away from Abbey Wood's Crossrail station.

- Council Tax: C
- EPC Rating: D

## FOR MORE INFORMATION CONTACT US TODAY.

01322 441010  
Robinson Jackson  
61 Nuxley Road,  
Belvedere,  
Kent DA17 5JN  
belvedere@robinson-jackson.com

