

Falcon Close
Dartford
DA1 5SA
Freehold

Robinson Jackson are proud to offer this recently renovated one bedroom home located only a short distance from Dartford Mainline Station and Town Centre and offered with no chain. Benefits inc...

- No Chain
- Close to Town Centre
- Allocated Parking Bay
- Freehold
- Ideal FTB or BTL
- Recently Renovated

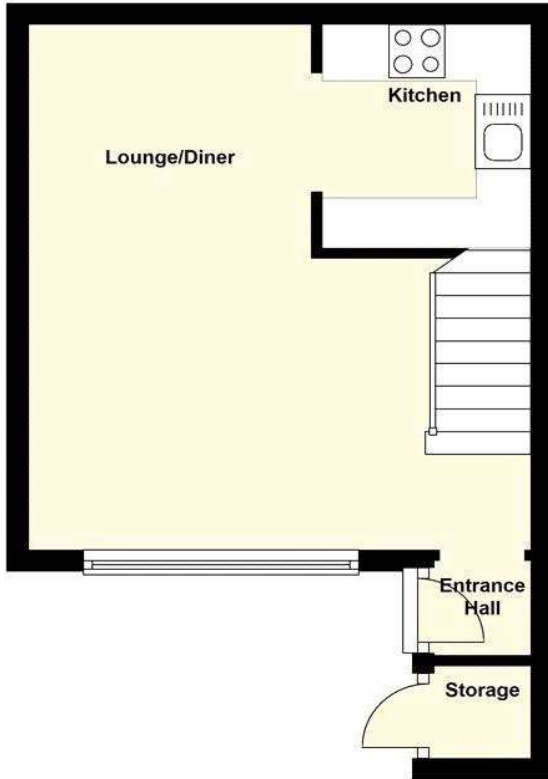
Offers in excess of £240,000



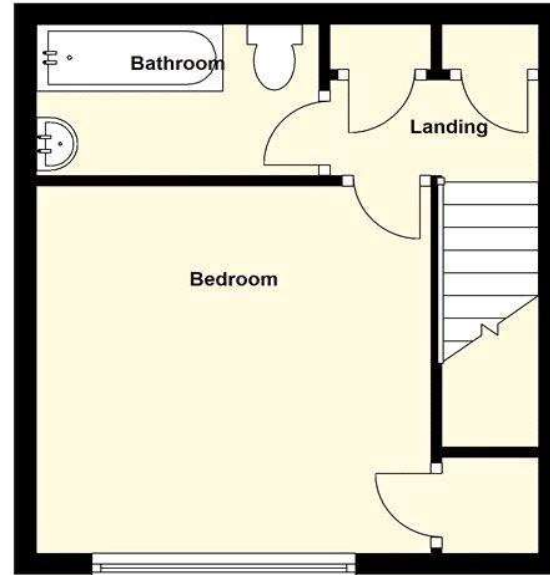
Council Tax: C
EPC Rating: C

ROBINSON-JACKSON
Our service will *move* you

Ground Floor



First Floor



FOR MORE INFORMATION
CONTACT US TODAY.

01322 281281

Robinson Jackson
22 Market Street,
Dartford,
Kent DA1 1EZ

dartford@robinson-jackson.com



Interior

Entrance Hall Door to side. Laminate flooring. Open to living area.

Living Room 4.95m x 4.55m (16'3" x 14'11") Double glazed windows to front. Double glazed box bay window to side. Two radiators. Stairs to first floor. Laminate flooring.

Kitchen 6,7 x 1.96m (6,7 x 6'5") Range of wall and base units with complementary workspaces over incorporating stainless steel sink drainer. Space for cooker. Plumbed for washing machine. Part tiled walls. Laminate flooring.

Landing Loft access. Storage cupboard. Cupboard housing water tank. Carpet.

Bedroom 3.56m x 3.43m (11'8" x 11'3") Double glazed window to front. Over stairs storage cupboard. Radiator. Carpet.

Bathroom Frosted double glazed window to side. Low level Wc. Vanity wash hand basin. Panelled bath with shower attachment. Radiator. Part tiled walls. Vinyl flooring.

Exterior

Garden: shrub beds. Storage cupboard housing boiler.

Parking: One allocated parking bat.

Additional Information

The boiler is located in the cupboard outside.

The property measures: 47 Sqm