



Stonehill Woods Park | Old London Road, Sidcup, DA14 5AS

 2  1  2 Asking Price £179,995 To be advised

ROBINSON-JACKSON
Our service will *move* you

Stonehill Wood Park,

Old London Road

Offered CHAIN FREE is this DETACHED PARK HOME. Located on a popular Retirement Park boasting two double bedrooms and large open plan living area its sure to be popular.

Property Features

- Council Tax: B
- EPC Rating: E
- No Stamp Duty
- Two Double Bedrooms
- Open Plan
- Lounge/Diner
- Separate Kitchen
- Shower Room
- Over 55's Development
- Allocated Parking
- Private Gardens to Front & Side



Interior

Entrance Hall Double glazed door to front, coved and textured ceiling, built in storage cupboard, radiator, carpet.

Lounge Area 4.72m x 3.58m (15'6" x 11'9") Double glazed bay window to front, double glazed window to side, coved and textured ceiling, gas feature fireplace, radiator, carpet.

Dining Area 3.18m x 2.95m (10'5" x 9'8") Double glazed bay window to side, coved and textured ceiling, built in cupboard housing boiler, radiator, carpet.

Kitchen 3.58m x 2.77m (11'9" x 9'1") Double glazed window and door to side, coved and textured ceiling, matching range of wall and base units incorporating cupboards, drawers and worktops, inset sink unit with drainer and mixer tap, integrated oven, hob and extractor hood, plumbed for washing machine, space for fridge/freezer, part tiled walls, laminate flooring.

Bedroom One 3.4m x 2.77m (11'2" x 9'1") Double glazed window to rear, coved and textured ceiling, radiator, carpet.

Bedroom Two 2.95m x 2.82m (9'8" x 9'3") Double glazed window to rear, coved and coved ceiling, radiator, carpet.

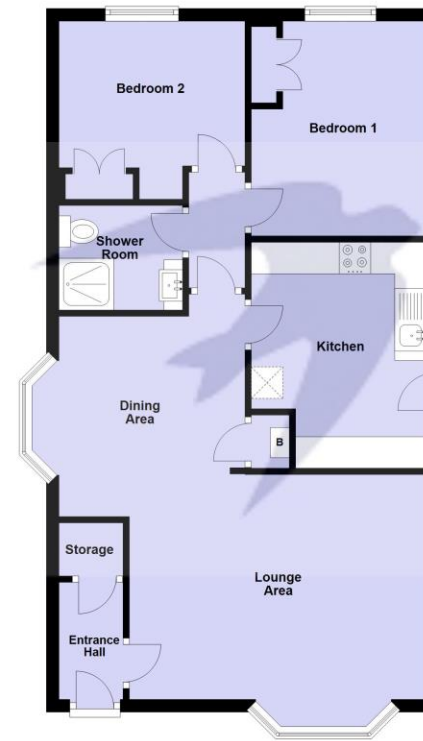
Shower Room 2.06m x 1.68m (6'9" x 5'6") Double glazed frosted window to side, enclosed shower cubicle, vanity wash hand basin, low level WC, part tiled walls, laminate flooring.

Exterior

Garden Paved wrap around area, laid to lawn area with mature shrubs, large workshop with power and light.

Parking One allocated parking place with the possibility to park at the side of the property.

Ground Floor



For Illustration Only
Plan produced using PlanUp.





Property Location

Stonehill Wood Park, Old London Road, Sidcup, DA14 5AS



Additional Information

This Park Home is neither leasehold nor freehold. Under the Mobile Home Act 2013, the land which it stands on remains the sole property of the site owner.

The park home itself will be yours outright, the land is not included in the purchase price, nor is it leased from the owner under a lease hold agreement. Instead, you will sign a Written Statement, under the Mobile Homes Agreement Act 2013 and pay a monthly pitch fee of £230.00 per month to locate your home on the pitch / park.

Managed by Sawyers Park Homes, please confirm with Sawyers Park Homes the tenure of the property.

**FOR MORE INFORMATION
CONTACT US TODAY.**

020 8298 0500

Robinson Jackson
1 Wellington Parade,
Blackfen,
Kent DA15 9NB

blackfen@robinson-jackson.com



These particulars do not form part of an offer or contract and must not be relied upon as statements or representation of fact. Any areas, measurements, journey times or distances are approximate. The text, images, photographs and plans are for guidance only and are not necessarily comprehensive. It should not be assumed that the property has all necessary planning, building regulation or other consents and we have not tested any services, equipment or facilities. References to tenure are based on information supplied by the seller. Buyer should verify all information themselves by inspection or otherwise prior to a legal commitment to purchase. Photos and images are subject to copyright.