



Bloors Lane

Rainham | Gillingham | ME8 7EJ



Bloors Lane

Rainham, Gillingham, ME8 7EJ

Asking Price £475,000
Freehold

Robinson Michael and Jackson are proud to offer this well presented Four Bedroom End Of Terrace Home with the added benefit of a Self-Contained Annex located centrally in Rainham.

Benefitting from:

- 1962 Square feet
- 0.9 Miles to Rainham (Kent) Station
- Walking distance to local schools
- Self-Contained annex
- Downstairs Cloakroom
- Driveway and garage to Rear
- Large north west facing garden
- Viewing Highly recommended
- Council Tax: D
- EPC Rating: D



Accommodation

Entrance Hall 1.65m x 4.32m (5'5" x 14'2") Double glazed composite door to front. Under stairs storage. Laminate flooring. Radiator.

Lounge 4.67m x 3.25m (15'4" x 10'8") Double glazed bay window to front. Gas fire. Carpet. Radiator.

Dining Room 5.38m x 3.56m (17'8" x 11'8") Double glazed door and window to rear. Laminate flooring. Two radiators.

Kitchen 3.76m x 2.8m (12'4" x 9'2") Double glazed door and window to rear. Space for white goods. Cooker. Range of wall and base units with worksurface over. Laminate flooring.

Landing 2.34m x 1.68m (7'8" x 5'6") Carpet.

Bedroom One 4.3m x 7.21m (14'1" x 23'8") Two Velux windows. Fitted wardrobe. Eaves storage. Laminate flooring.

Bedroom Two 3.76m x 3.28m (12'4" x 10'9") Double glazed bay window to front. Fitted storage cupboard. Laminate flooring. Radiator.

Bedroom Three 3.53m x 2.87m (11'7" x 9'5") Double glazed window to rear. Fitted wardrobe. Laminate flooring. Radiator.

Bedroom Four 2.36m x 1.7m (7'9" x 5'7") Double glazed window to front. Laminate flooring. Radiator.

Bathroom 2.64m x 2.03m (8'8" x 6'8") Bath with shower enclosed. Low level WC. Wash hand basin. Laminate flooring.

Rear Garden Northwest facing. Patio and lawn. Double gates to rear. Shed. Rear access for pedestrians. Side access. Access to garage & Driveway

Garage Up and over door. Power and lighting.

Parking To rear of property. Space for 1-2 cars.

Annex

Lounge 3.53m x 4.11m (11'7" x 13'6") Composite door to side. Double glazed window to front. Laminate flooring. Radiator.

Ground Floor WC 1.3m x 0.79m (4'3" x 2'7") WC with basin. Laminate flooring.

Bedroom Double glazed window to front. Two fitted wardrobes. Laminate flooring. Radiator.

Bathroom 2.67m x 2.64m (8'9" x 8'8") Enclosed shower. Low level WC. Wash hand basin. Boiler cupboard. Heated towel rail. Laminate flooring.





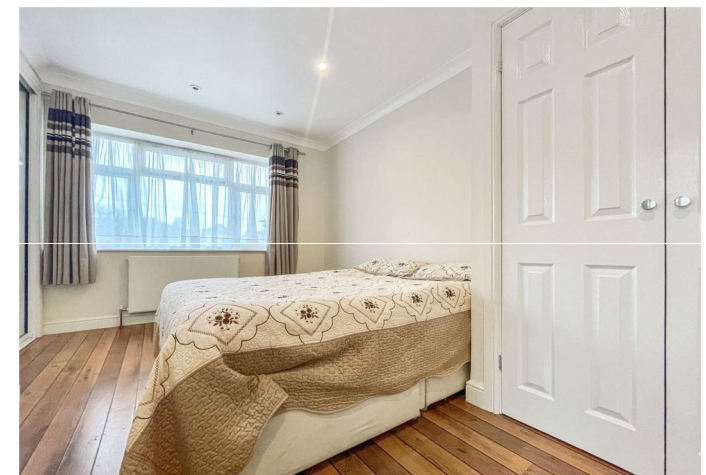
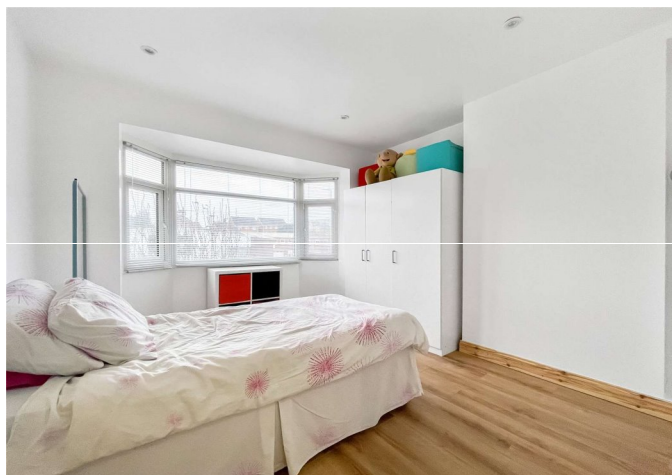
Exterior

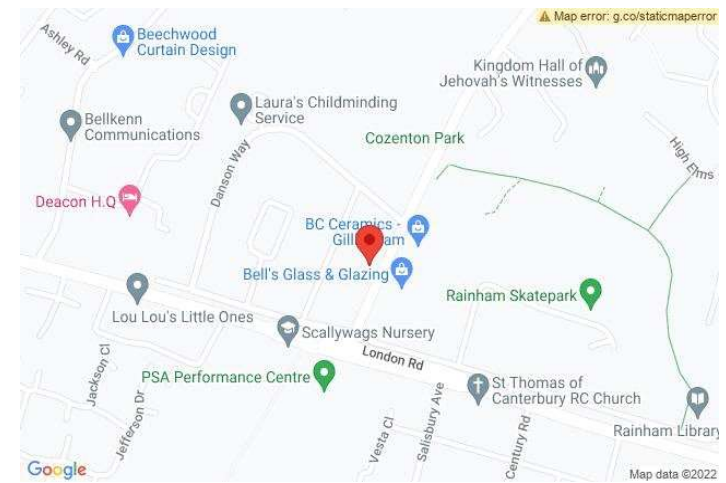
**Rear Garden Northwest facing garden. Fenced in. Patio and lawn. Garage and Driveway
Rear access.**

Additional Information

Rainham and Gillingham lie in the Medway, both being circled by charming semi-rural villages. There are several shopping destinations for residents, including Hempstead Valley Shopping Centre and Gillingham Business Retail Park, as well as an abundance of local pubs and restaurants. Both towns are served by well-respected schools, including Rainham Mark Grammar.

Rainham and Gillingham have oodles of open space and facilities, including Capstone Country Park, Berengrave Nature Reserve, Riverside Country Park, the Silver Blades Ice Rink, the Ski & Snowboard centre and Great Lines Heritage Park.





Important Notice

These particulars do not form part of an offer or contract and must not be relied upon as statements or representation of fact. Any areas, measurements, journey times or distances are approximate. The text, images, photographs and plans are for guidance only and are not necessarily comprehensive. It should not be assumed that the property has all necessary planning, building regulation or other consents and we have not tested any services, equipment or facilities. References to tenure are based on information supplied by the seller. Buyer should verify all information themselves by inspection or otherwise prior to a legal commitment to purchase. Photos and images are subject to copyright.

Location



(All distances & times are approximates)

FOR MORE INFORMATION CONTACT US TODAY.

Lee Franklin - Branch Manager

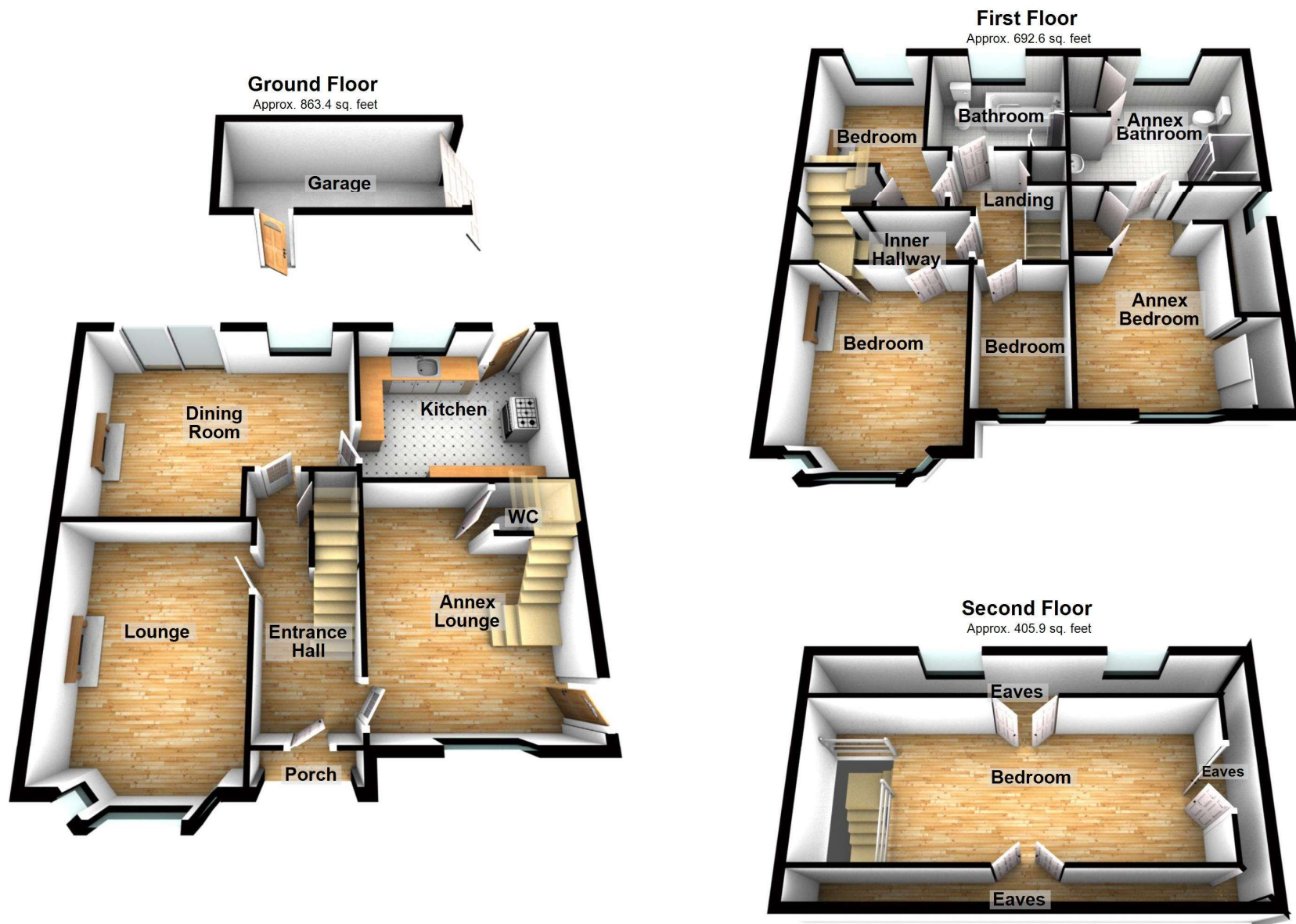
01634 263000

Robinson Michael & Jackson
17 High Street,
Rainham,
Kent ME8 7HX

rainham@robinson-jackson.com

SALES | MORTGAGES | LEGALS

ROBINSON MICHAEL & JACKSON



Total area: approx. 1962.0 sq. feet

Please be advised this plan is offered for marketing purposes only. It can not be relied upon for exact or precise measurements, angles, window or door openings. Whilst every effort is made to ensure the accuracy the company or provider accepts no responsibility for the content.
Plan produced using PlanUp.

