



Ruby Tuesday Drive | Dartford, Kent, DA1 5RE



5



2



1

Asking Price £450,000 Freehold

ROBINSON-JACKSON
Our service will *move* you

Ruby Tuesday Drive, Dartford

Robinson Jackson are proud to offer this four/five bedroom end of terraced town house located on the ever sought after 'Bridge' Development offered with no onward chain. Benefits include...

Property Features

- Council Tax: E
- EPC Rating: B
- Family Home on a Popular Development
- No Chain
- En-Suite to Master Bedroom
- Ground Floor Wc
- Allocated Parking Bay
- Catchment for Sought After Schools



Interior

Entrance Hall Entrance Hall: Door to front. Radiator. Laminate flooring.

Ground Floor Cloakroom Frosted double glazed window to front. Low level WC. Pedestal wash hand basin. Radiator. Part tiled walls. Tiled flooring.

Lounge/Diner 5.54 (18'2")m nrw 4.7 (15'5")m x 4.78 (15'8")m Double glazed window to rear. Double glazed French

doors to rear. Under stairs storage cupboard. Radiator. Laminate flooring.

Kitchen: 3.56m x 2.51m (11'8" x 8'3") Double glazed window to front. Range of wall and base units with complimentary work surfaces over. Stainless steel sink and drainer. Integrated oven, hob and extractor fan. Plumbed for washing machine. Space for fridge/ freezer. Cupboard housing boiler. Integrated dishwasher. Tiled flooring.

Landing Radiator. Carpet.

Bedroom 1 4.78 (15'8")m x 3.48 (11'5")m nrw 2.8 (9'2")m Double glazed window to rear. Radiator. Carpet.

En suite 2.46m x 1.63m (8'1" x 5'4") Frosted double glazed window to side. Low level WC. Pedestal wash hand basin. Double shower cubicle. Part tiled wall. Tiled flooring.

Family Room/Bedroom Five 4.78 (15'8")m x 3.15 (10'4")m nrw 1.7 (5'7")m Two double glazed windows to front. Fitted wardrobes. Radiator. Carpet.

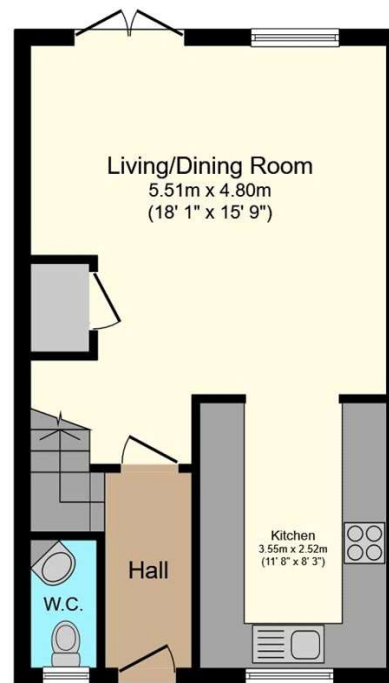
Second Floor Landing Loft access. Carpet.

Bedroom 2 4.8m x 2.8m (15'9" x 9'2") Two double glazed windows to rear. Radiator. Carpet.

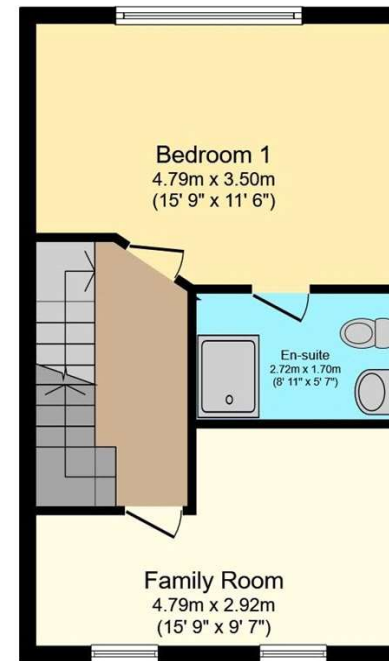
Bedroom 3 3.58m x 2.29m (11'9" x 7'6") Double glazed window to front. Radiator. Carpet.

Bedroom 4 2.46m x 2.41m (8'1" x 7'11") Double glazed window to front. Radiator. Carpet.

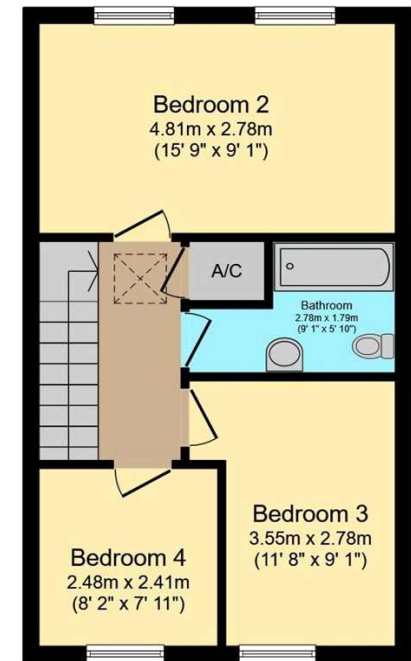
Bathroom Frosted double glazed window to side. Low level WC. Pedestal wash hand basin. Panelled bath with shower attachment. Radiator. Part tiled walls. Tiled floor.



Ground Floor



First Floor



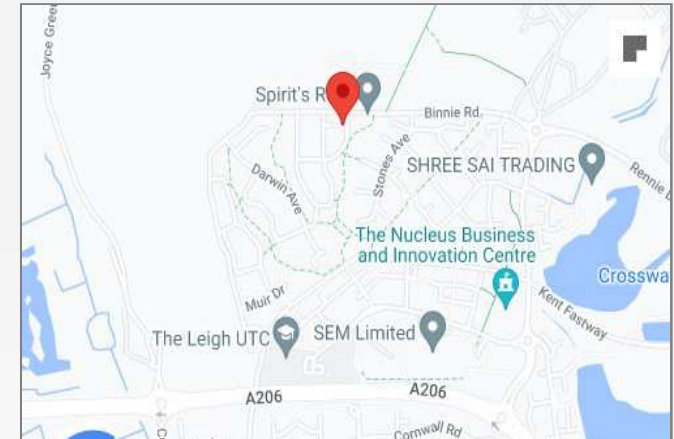
Second Floor





Property Location

Ruby Tuesday Drive, Dartford, Kent, DA1 5RE



*All distances from branch postcode. Train time from nearest station.

Additional Information

The boiler is located in the Kitchen.

The property measures: 120 Sqm

Exterior

Rear garden: Approx 30'. Patio. lawn. Gated access.

Parking: One allocated parking bay.

**FOR MORE INFORMATION
CONTACT US TODAY.**

01322 281281

Robinson Jackson
22 Market Street,
Dartford,
Kent DA1 1EZ

dartford@robinson-jackson.com

