



Purneys Road | London, SE9 6HX



3



1



1

Offers in excess of £450,000

Freehold

**ROBINSON-JACKSON**  
Our service will *move* you

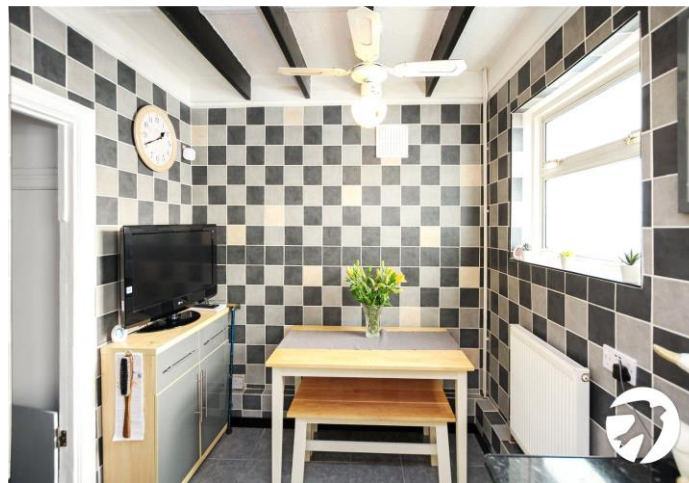


## Purneys Road, London

Located within a short distance of Kidbrooke Village is this well presented 'Laings Easiform' concrete construction semi detached house with the benefits of off street parking.

### Property Features

- Three bedrooms
- Conservatory
- 17'10 8' Kitchen/diner
- Off street parking
- Well presented
- A must view





## Interior

**Entrance Hall** Door to front, understairs storage cupboard

**Lounge** 16 x 3.66m (16 x 12') Double glazed bay window to front, radiator, beamed ceiling

**Kitchen** 5.44m x 2.44m (17'10" x 8') Two double glazed windows to rear, double glazed door to rear, wall and base units, ceramic sink with mixer tap, built in electric eye level oven, electric hob, part tiled walls, beamed ceiling

**Conservatory** 5m x 3.15m (16'5" x 10'4") Double glazed construction on a dwarf wall, plumbing for washing machine, space for tumble dryer

**Landing** Double glazed window to side, built in cupboard, loft hatch

**Bedroom 1** 3.35m x 2.29m (11' x 7'6") to front of wardrobes. Double glazed window to rear, radiator, built in mirrored wardrobes, ceiling fan, built in cupboard

**Bedroom 2** 2.82m x 2.74m (9'3" x 9') Double glazed window to front, radiator, built in mirrored wardrobes, ceiling fan

**Bedroom 3** 2.6m x 2.3m (8'6" x 7'7") Double glazed window to rear, radiator

**Shower Room** Double glazed frosted window to front, vanity wash hand basin, shower cubicle, low level wc, heated towel rail, vinyl flooring, full tiled walls

## Exterior

**Garden** Laid to flagstone, large wooden cabin

**Parking** Off street parking to front

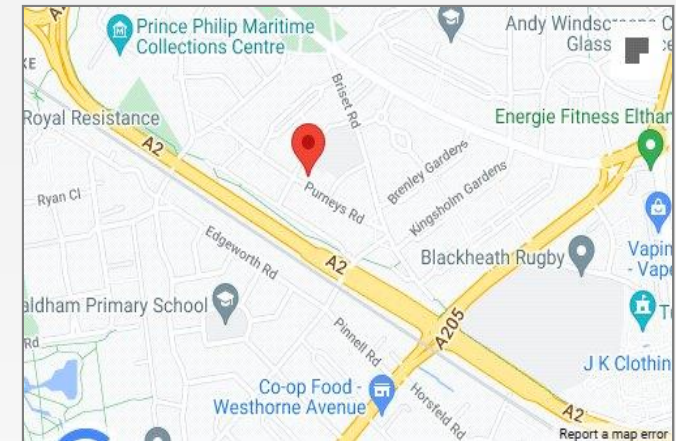






## Property Location

Purneys Road, London, SE9 6HX



## Additional Information

Eltham is a popular town in the Royal Borough of Greenwich, with £2 million recently been spent on a High Street revitalisation programme, including a new cinema and sky bar complex.

There's a mainline train station offering a direct route to London and the magnificent Art Deco Eltham Palace. The Heritage Restaurant & Bar at the Tudor Barn, a modern leisure centre, the Bob Hope Theatre and Well Hall Pleasaunce can all be found in the town.

- Council Tax: C
- EPC Rating: To be confirmed

## FOR MORE INFORMATION CONTACT US TODAY.

020 8859 9600

Robinson Jackson  
2-4 Court Yard,  
Eltham,  
London SE9 5PZ

eltham@robinson-jackson.com

