



Whitefoot Lane | Bromley, BR1 5SF



3



1



2

Asking Price £425,000

Freehold

ROBINSON-JACKSON
Our service will *move* you

Whitefoot Lane, Bromley

1930's built terraced house well located for shops, schools and public transport. Ideal for a buyer looking to put their stamp on a property. Benefitting from Two reception rooms, 48' rear garden, first floor bathroom and being sold with onward chain.

Property Features

- Council Tax: D
- EPC Rating: D
- Mid Terrace house
- Three bedrooms
- 2 reception rooms
- Double glazing
- 48ft rear garden
- No onward chain



Interior

Hall UPVC front door, radiator, carpet, picture rail, coved ceiling, understair storage.

Lounge 4.6m into bay x 3.15m (15'1" into bay x 10'4") Double glazed bay window to front, radiator, fireplace, picture rail, carpet.

Dining Room 3.53m x 2.97m (11'7" x 9'9") Double glazed window to rear, radiator, carpet, gas fire.

Kitchen 2.57m x 1.78m (8'5" x 5'10") Double glazed window and door to rear, wall and base units, wall mounted boiler, vinyl flooring, storage cupboard.

Landing Stairs to first floor landing

Bedroom 1 4.72m into bay x 2.97m (15'6" x 9'9") Double glazed bay window to front, radiator, carpet, picture rail, coved ceiling, fitted wardrobe.

Bedroom 2 3.56m x 2.97m (11'8" x 9'9") Double glazed window to rear, carpet, built in wardrobe.

Bedroom 3 2.57m x 1.85m (8'5" x 6'1") Double glazed window to front, carpet.

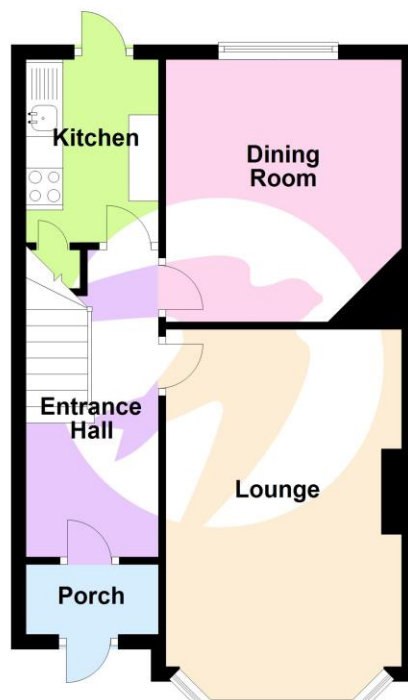
Bathroom Double glazed opaque window to rear, three piece suite comprising of panelled bath with mixer tap, pedestal wash hand basin, low level w.c., radiator, tiled walls.

Exterior

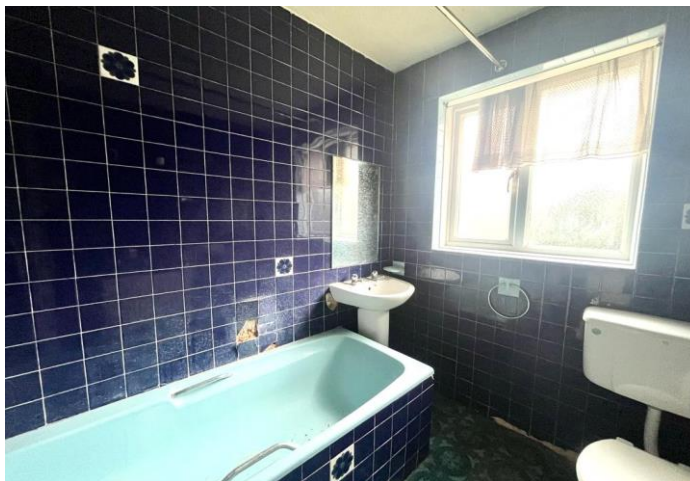
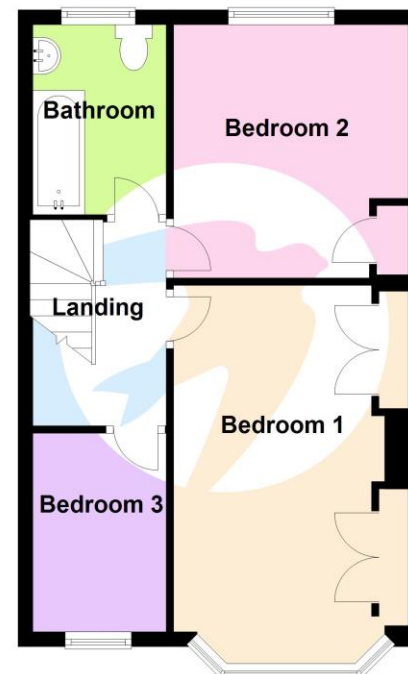
Front Garden Mainly laid to lawn with mature shrubs.

Rear Garden 14.63m (48')

Ground Floor



First Floor





Location

Catford is growing in popularity among commuters as journeys from its two mainline stations can take as little as 10 minutes to Central London.

The Broadway Theatre is an impressive Art Deco building, with a regular programme of shows and events. Catford's other premium attraction is Mountsfield Park – one of London's best open spaces and home of the annual People's Day. Catford's Black Cat sculpture remains a well-loved landmark.

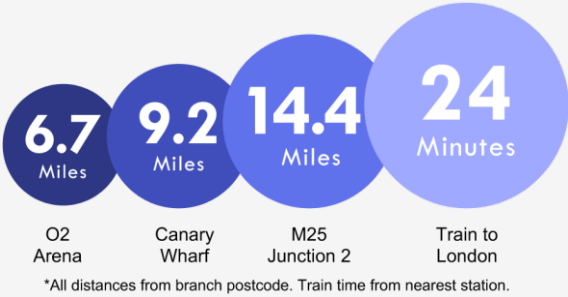
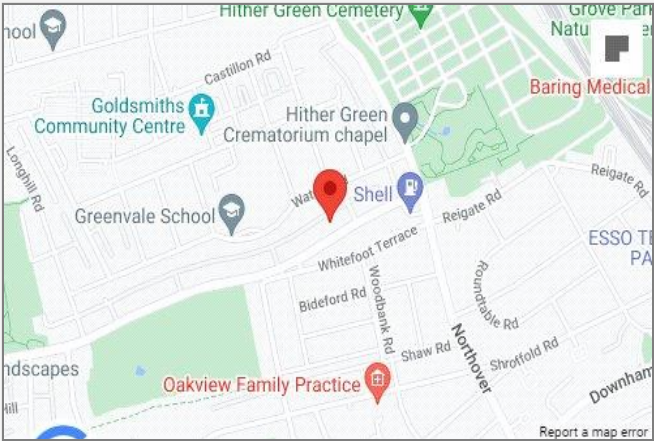
Additional Information

Local Authority: London Borough of Lewisham

Council Tax: Band D (£1,817 pa)

Property Location

Whitefoot Lane, Bromley, BR1 5SF



**FOR MORE INFORMATION
CONTACT US TODAY.**

020 8698 1234
Robinson Jackson
87 Rushey Green,
Catford,
London SE6 4AF
catford@robinson-jackson.com



These particulars do not form part of an offer or contract and must not be relied upon as statements or representation of fact. Any areas, measurements, journey times or distances are approximate. The text, images, photographs and plans are for guidance only and are not necessarily comprehensive. It should not be assumed that the property has all necessary planning, building regulation or other consents and we have not tested any services, equipment or facilities. References to tenure are based on information supplied by the seller. Buyer should verify all information themselves by inspection or otherwise prior to a legal commitment to purchase. Photos and images are subject to copyright.