



Albert Reed Gardens | Tovil, Maidstone, ME15 6JY

 4  1  1 Offers in excess of £425,000 Freehold

ROBINSON MICHAEL & JACKSON 
Our service will **move** you

Albert Reed Gardens, Tovil

Robinson Michael & Jackson are delighted to present this semi-detached, four double bedroom town house, which offers open planned living, off-street parking and additional garage to the side.

Property Features

- Council Tax: E
- EPC Rating: C
- Four bedrooms
- Over three floors
- Off-Street parking & Garage
- Brand new open planned Kitchen



Interior

Lounge 3.56m x 4.75m (11'8" x 15'7") Under stair storage, windows to front, radiator, open planned to dining room/kitchen

Downstairs WC 1.4m x 0.7m (4'7" x 2'4") Window to front, basin & toilet

Kitchen/Dining Room 3.68m x 15.3 (12'1" x 15.3) Open planned to dining room, window to rear, doors leading out into garden, radiator.

Bedroom 1 2.84m x 4.04m (9'4" x 13'3") Windows to rear, built in wardrobes, en-suite

En-Suite 1.93m x 1.9m (6'4" x 6'3") Window to side, shower, toilet & basin

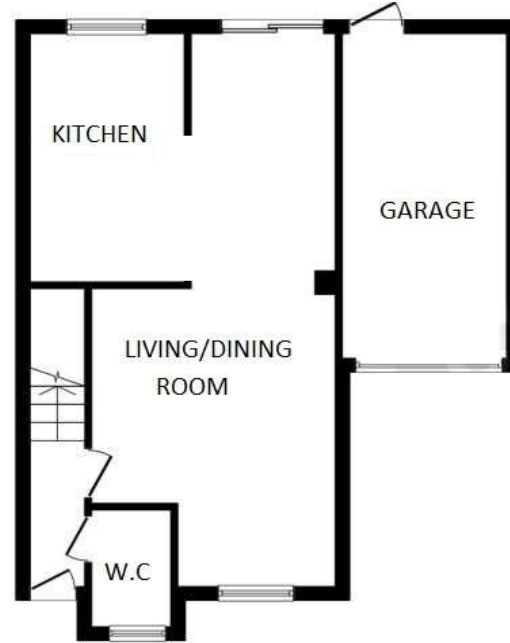
Bedroom 2 2.82m x 4.04m (9'3" x 13'3") Windows to rear, build in wardrobes, radiator

Bedroom 3 3.38m x 4.6m (11'1" x 15'1") Windows to front, radiator, storage cupboard

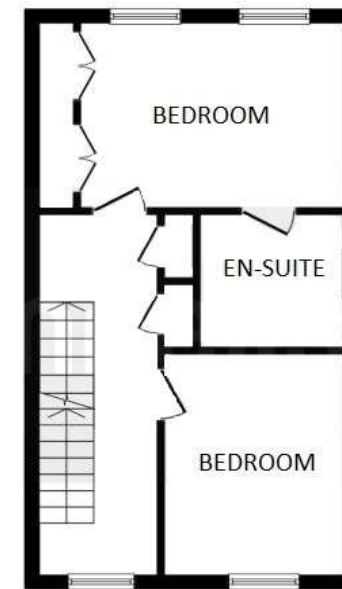
Bedroom 4 2.62m x 3.28m (8'7" x 10'9") Windows to front, radiator

Bathroom 1.93m x 1.93m (6'4" x 6'4") Windows to side, shower over bath, basin & toilet

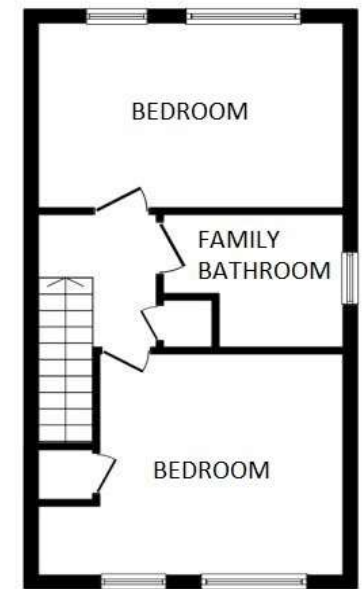
Garage 2.54m x 2.74m (8'4" x 9') Lighting, added storage



Ground Floor



First Floor



Second Floor

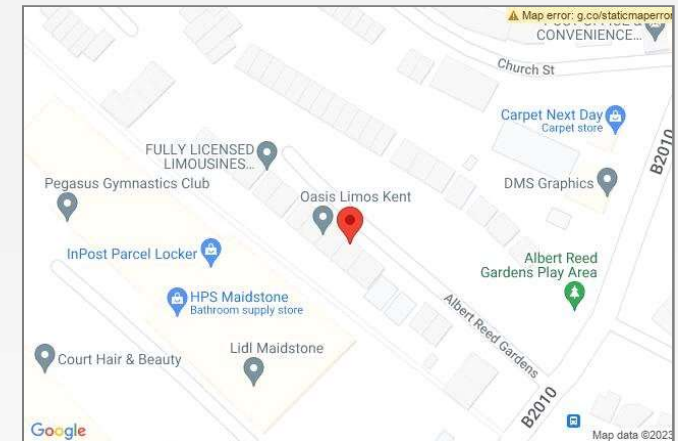
This floor plan is for illustrative purposes only. It is not drawn to scale. Any measurements, floor areas (including any total floor area), openings and orientation are approximate. No details are guaranteed, they cannot be relied upon for any purpose and they do not form part of any agreement. No liability is taken for any error, omission or misstatement. A party must rely upon its own inspection(s).
Plan produced for Connells. Powered by www.focalagent.com





Property Location

Albert Reed Gardens, Tovil, Maidstone, ME15 6JY



READY TO MOVE?
Scan to instruct us

**FOR MORE INFORMATION
CONTACT US TODAY.**

01622 476666
Robinson Michael & Jackson
15A King Street
Maidstone,
Kent ME14 1BA
maidstone@robinson-jackson.com

