



Old Road East | Gravesend, Kent, DA12 1PW



Guide Price £350,000 - £375,000

Freehold

**ROBINSON MICHAEL & JACKSON**  
Our service will *move* you

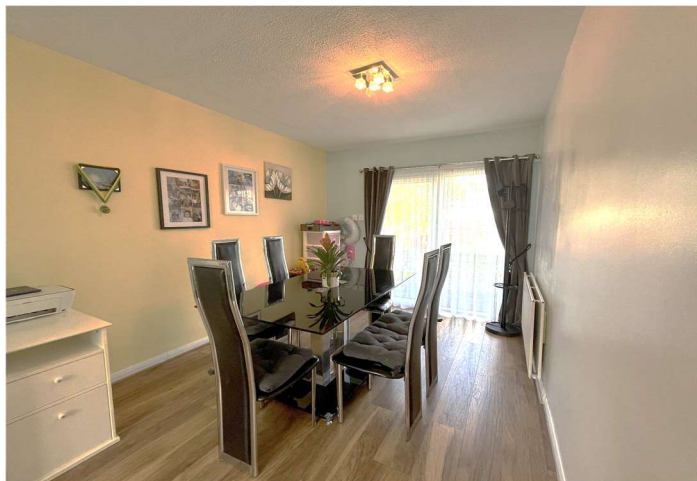


## Old Road East, Gravesend

Introducing this gorgeous end of terrace property on Old Road East. With versatile living room, good sized bedrooms and parking to the rear, this one shouldn't be missed!

### Property Features

- Council Tax: C
- EPC Rating: D
- Spacious Property
- Parking to Rear
- Open plan living/dining space.
- Good sized bedrooms
- Downstairs W.C
- Period Property





## Interior

**Entrance Hall:** 3.66m x 1.68m (12' x 5'6") Double glazed door to front. Double glazed window to side. Radiator. Wooden flooring. Doors to: -

**GF Cloakroom:** 1.47m x 0.9m (4'10" x 2'11") Double glazed frosted window to rear. Double glazed frosted door to garden. Low level w.c Wash hand basin. Spotlighting.

**Lounge Diner:** 8.15m x 3.68m (26'9" x 12'1") Double glazed bay window to front. Two radiators. Double glazed sliding patio doors to garden. Wood flooring.

**Kitchen:** 3.7m x 2.46m (12'2" x 8'1") Double glazed window to rear. Wall and base units with roll top work surface over. Integrated oven and hob with extractor hood over. Sink and drainer unit. Free standing fridge freezer and washing machine. Spotlighting.

**First Floor Landing:** 2.67m x 1.9m (8'9" x 6'3") Double glazed window to side. Built-in cupboard. Wood flooring. Doors to: -

**Bedroom 1:** 3.68m x 3.48m (12'1" x 11'5") Double glazed window to rear. Radiator. Wood flooring.

**Bedroom 2:** 4.06m x 2.72m (13'4" x 8'11") Double glazed bay window to front. Built-in wardrobe. Radiator. Wood flooring.

**Bedroom 3:** 2.51m x 1.98m (8'3" x 6'6") Double glazed window to front. Radiator. Wood flooring.

**Bathroom:** 1.88m x 1.52m (6'2" x 5') Double glazed frosted window to rear. Suite comprising panelled bath with shower over. Wash hand basin. Low level w.c. Radiator. Tiled wall. Tiled flooring.

## Exterior

**Rear Garden:** Approx. 65ft x 24'1 Ft: Patio area. Stairs up to laid to lawn level. Hardstanding parking to rear.

**Parking:** Driveway (no dropped kerb).

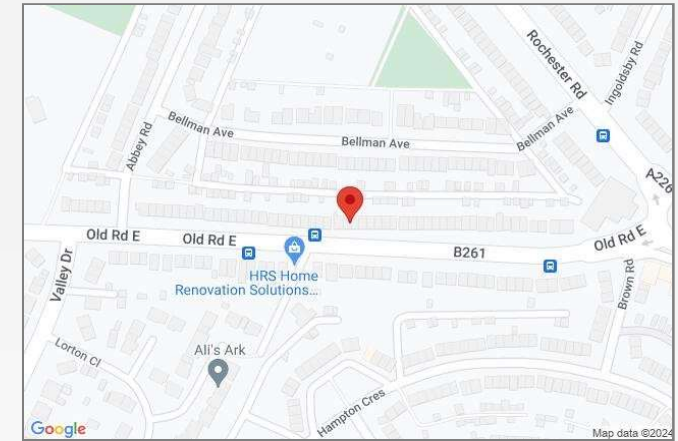






## Property Location

Old Road East, Gravesend, Kent, DA12 1PW



## Additional Information

With families flocking to Northfleet and Gravesend for excellent education, the town has some great facilities to match including: - Cascades Leisure Centre and the Cygnets Leisure Centre both for swimming, gym, classes and fitness training. There are numerous clubs and team sports throughout Northfleet & Gravesend including Ebbsfleet United Football Club, Gravesend Rugby Club and Gravesend Golf Centre.

**FOR MORE INFORMATION  
CONTACT US TODAY.**

01474 333111

Robinson Michael & Jackson  
21A & B King Street,  
Gravesend,  
DA12 2EB

[gravesend@robinson-jackson.com](mailto:gravesend@robinson-jackson.com)

