



Phillips Close | West Dartford, Kent, DA1 3HB



£325,000 to £350,000

Freehold

ROBINSON-JACKSON
Our service will *move* you

Phillips Close, West Dartford

Available for sale with no forward chain
Robinson Jackson are delighted to offer for sale
this two bedroom terraced located in a popular
close on the West side of Dartford. Viewing
highly recommended.

Property Features

- Council Tax: D
- EPC Rating: D
- 0.8 Miles To Crayford Station
- Located On The 96 Bus Route
- Ideally Located For Dartford And Crayford Town Centres
- 0.6 Miles Walk To West Dartford's Popular Schools
- No Forward Chain
- Parking To ReaR



Interior

Entrance Hall: Frosted double glazed entrance door. Coved ceiling. Two electric economy 7 storage heaters. Herringbone effect vinyl flooring. Cupboard housing electric meters. Gas pipe. Carpeted stairs to first floor.

Kitchen Diner: Double glazed window to front. Matching base units with complimentary worksurfaces. Plumbing for washing machine. Stainless steel sink unit. Space for cooker and fridge freezer. Tiled splash back. Vinyl flooring.

Lounge: Double glazed patio door to garden. Large under-stairs storage cupboard. Economy 7 storage heater. Carpet.

Landing : Access to loft. Coved ceiling. Carpet. Cupboard housing hot water cylinder.

Bedroom One: Double glazed window to rear. Electric heater. Carpet.

Bedroom Two: Double glazed window to front. Carpet.

Shower Room: Frosted double glazed window to front. Vanity wash hand basin. Tiled double shower cubicle. Part tiled walls. Stainless steel electric radiator. Wood effect vinyl floor.

Separate WC: Extractor fan. Low level WC. Wash hand basin. Wood effect vinyl flooring.

Exterior

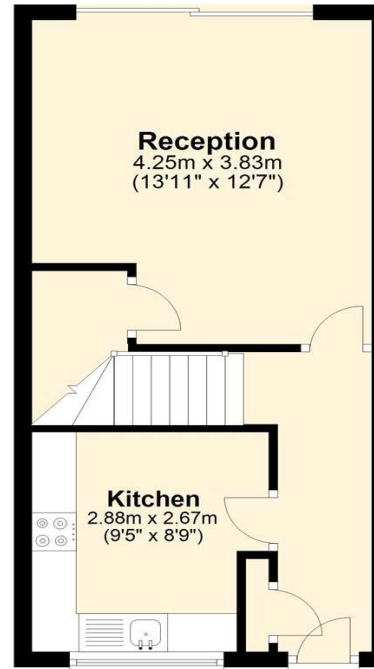
Rear Garden: Approx 36ft. Patio area. Shrub borders. Rear vehicular access. Shed.

Front Garden: Laid to lawn. Side vehicular access with gate to hardstanding.

Parking: Hardstanding to the rear accessed via rear vehicular access to the side.

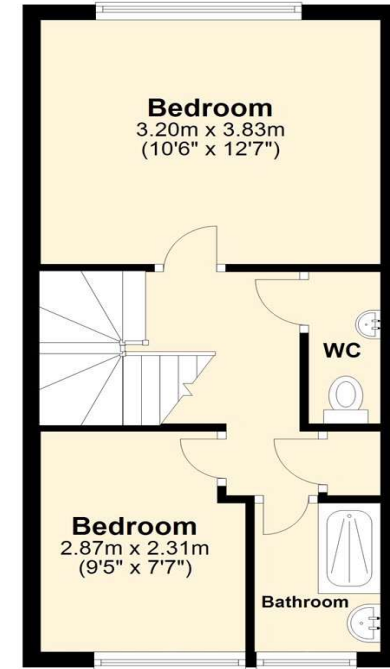
Ground Floor

Approx. 31.7 sq. metres (341.3 sq. feet)



First Floor

Approx. 31.7 sq. metres (340.9 sq. feet)



Total area: approx. 63.4 sq. metres (682.2 sq. feet)

Total square meter includes external garage
Plan produced using PlanUp.





Property Location

Phillips Close, West Dartford, Kent, DA1 3HB



*All distances from branch postcode. Train time from nearest station.

Additional Information

The property is currently going through probate and it is yet to be granted.

Council Tax Dartford Band D

The property measures 63 Square Metres

Please note the property currently has electric heating. A gas pipe is run to the property but it needs reconnecting.

**FOR MORE INFORMATION
CONTACT US TODAY.**

01322 281281

Robinson Jackson
22 Market Street,
Dartford,
Kent DA1 1EZ

dartford@robinson-jackson.com



These particulars do not form part of an offer or contract and must not be relied upon as statements or representation of fact. Any areas, measurements, journey times or distances are approximate. The text, images, photographs and plans are for guidance only and are not necessarily comprehensive. It should not be assumed that the property has all necessary planning, building regulation or other consents and we have not tested any services, equipment or facilities. References to tenure are based on information supplied by the seller. Buyer should verify all information themselves by inspection or otherwise prior to a legal commitment to purchase. Photos and images are subject to copyright.