



Wayville Road | Dartford, Kent, DA1 1RL



Asking Price £600,000 Freehold

ROBINSON-JACKSON
Our service will *move* you

Wayville Road, Dartford

Robinson Jackson are pleased to offer this well presented and maintained four double bedroom detached family home. Located ideally for sought after schools and transport links. Benefits inc...

Property Features

- Council Tax: E
- EPC Rating: B
- Four Double Bedrooms
- Two Reception Rooms
- Utility Room
- Ground Floor Shower Room
- Orangerie
- Cul-De-Sac Location



Interior

Entrance Porch Door to front. Tiled floor. Doors to entrance porch.

Entrance Hall Door to porch. Radiator. Stairs to first floor. Tiled flooring.

Ground Floor Shower Room Low level Wc. Vanity wash hand basin. Shower cubicle. Heated towel rail. Tiled walls and floor.

Kitchen Breakfast Room 5.66 (18'7")m x 3.33 (10'11")m nr to 2.1 (6'11")m Double glazed window to front. Double glazed door to side. Range of wall and base units with complementary worksurfaces over incorporating stainless steel sink drainer. Integrated double oven, hob and extractor hood. Integrated dishwasher. Radiators. Tiled flooring.

Lounge 6.43m x 3.8m (21'1" x 12'6") Double glazed windows and sliding door to conservatory. Radiator. Carpet.

Dining Room 5.16m x 2.44m (16'11" x 8') Double glazed window to front. Radiator. Laminate flooring. Cupboard housing meters.

Utility Room Double glazed window to rear. Skylight. Wall mounted boiler. Wall mounted boiler. Plumbed for washing machine. Laminate flooring.

Orangerie 5.23m x 2.72m (17'2" x 8'11") Double glazed window and French doors to rear. Radiator. Laminate flooring.

Landing Frosted double glazed window to side. Loft access. Storage cupboard. Radiator. Carpet.

Bedroom One 3.6m x 3.33m (11'10" x 10'11") Double glazed window to rear with secondary glazing. Fitted wardrobes. Radiator. Carpet.

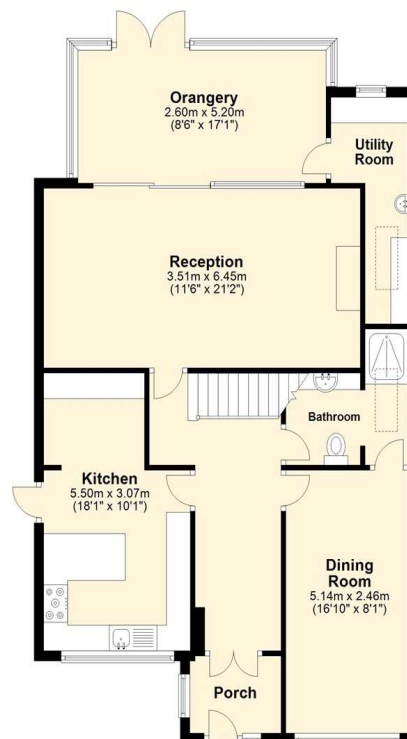
Bedroom Two 3.5m x 3.73m (11'6" x 12'3") Double glazed window to front. Fitted wardrobes. Carpet.

Bedroom Three 3.5m x 2.64m (11'6" x 8'8") Double glazed window to front. Radiator. Fitted wardrobes. Carpet.

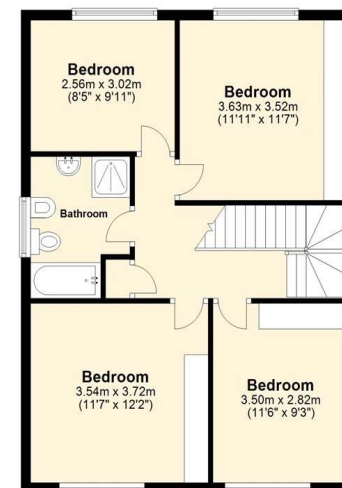
Bedroom Four 3.02m x 2.7m (9'11" x 8'10") Double glazed window to rear with secondary glazing. Fitted wardrobes. Radiator. Carpet.

Family Bathroom 2.74m x 2.06m (9' x 6'9") Frosted double glazed window to side. Low level Wc. Bidet. Vanity wash hand basin. Shower cubicle. Panelled Bath with shower over. Tiled walls. Heated towel rail. Tiled flooring.

Ground Floor
Approx. 93.4 sq. metres (1005.5 sq. feet)



First Floor
Approx. 60.5 sq. metres (651.6 sq. feet)



Total area: approx. 154.0 sq. metres (1657.2 sq. feet)

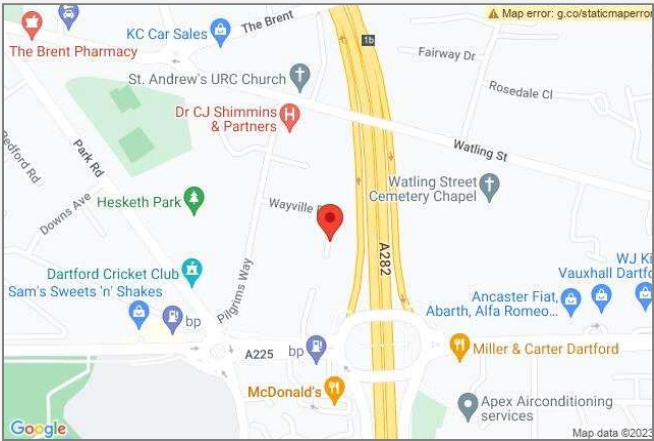
Total square meter includes external garage
Plan produced using PlanUp.





Property Location

Wayville Road, Dartford, Kent, DA1 1RL



*All distances from branch postcode. Train time from nearest station.

Additional Information

The boiler is located in the landing

The property measures: 136 Sqm

Exterior

Rear Garden: Approx 35'. Patio. Raised flower beds. Artificial grass.

Front Garden: Brick laid driveway for two cars.

**FOR MORE INFORMATION
CONTACT US TODAY.**

01322 281281
Robinson Jackson
22 Market Street,
Dartford,
Kent DA1 1EZ
dartford@robinson-jackson.com



These particulars do not form part of an offer or contract and must not be relied upon as statements or representation of fact. Any areas, measurements, journey times or distances are approximate. The text, images, photographs and plans are for guidance only and are not necessarily comprehensive. It should not be assumed that the property has all necessary planning, building regulation or other consents and we have not tested any services, equipment or facilities. References to tenure are based on information supplied by the seller. Buyer should verify all information themselves by inspection or otherwise prior to a legal commitment to purchase. Photos and images are subject to copyright.