



Chapelfield Way | Allington, Maidstone, ME16 9FS



2



2



1

Asking Price £290,000 Leasehold

ROBINSON MICHAEL & JACKSON

Our service will **move** you

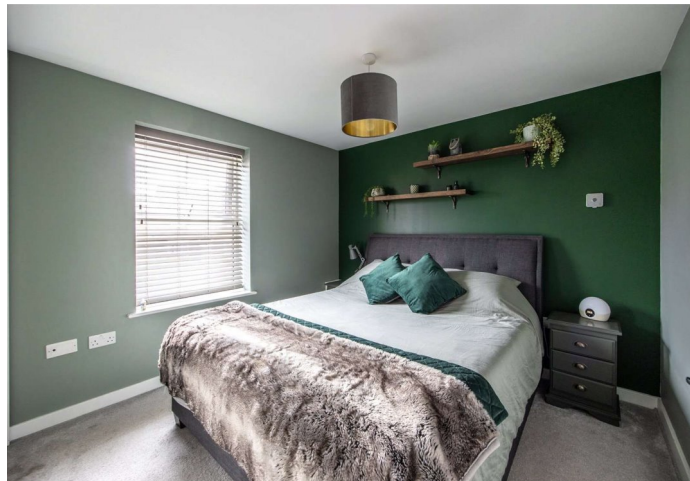
Chapelfield Way, Allington

Robinson Michael & Jackson are delighted to present this modern and spacious two bedroom, two bathroom first floor apartment.

This home is just a short walk away from Maidstone hospital and Barming train station which takes you to Maidstone or London Victoria, with easy access to the M20.

Property Features

- Council Tax: D
- EPC Rating: B
- Two allocated parking bays
- Two double bedrooms
- Secure gated bike shed
- Open planned living/dining area with plenty of natural sun light
- Balcony
- Modern spacious interior



Interior

Lounge/Dining Room 2.9m x 7.65m (9'6" x 25'1") Windows to front and rear, doors leading to balcony, spacious room

Kitchen 2.6m x 2.97m (8'6" x 9'9") Window to front, integrated appliances

Bedroom 1 2.9m x 3.1m (9'6" x 10'2") Window to rear, en-suite with shower and built in wardrobes

En-suite 1.14m x 2.9m (3'9" x 9'6") Shower, basin & WC

Bedroom 2 4.14m x 2.82m (13'7" x 9'3") Windows to rear, double room

Bathroom 2.03m x 1.9m (6'8" x 6'3") Shower over bath, basin & WC



Leasehold Information

Time remaining on lease: Approx. 125 years

Ground Rent: Not Available

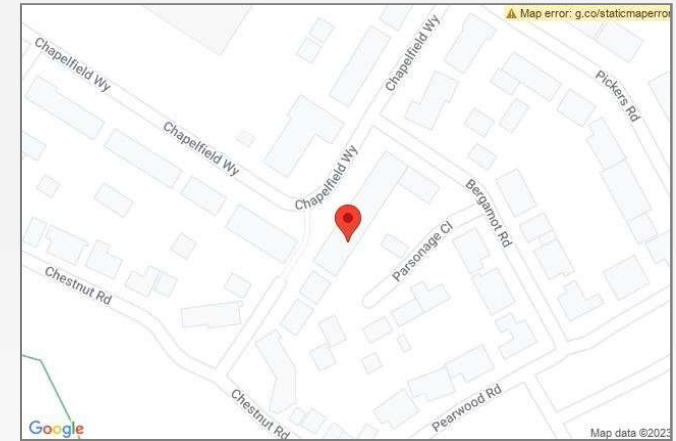
Service Charge: £1,500 Per Annum





Property Location

Chapelfield Way, Allington, Maidstone, ME16 9FS



*All distances from branch postcode. Train time from nearest station.

**FOR MORE INFORMATION
CONTACT US TODAY.**

01622 476666
Robinson Michael & Jackson
15A King Street
Maidstone,
Kent ME14 1BA
maidstone@robinson-jackson.com



These particulars do not form part of an offer or contract and must not be relied upon as statements or representation of fact. Any areas, measurements, journey times or distances are approximate. The text, images, photographs and plans are for guidance only and are not necessarily comprehensive. It should not be assumed that the property has all necessary planning, building regulation or other consents and we have not tested any services, equipment or facilities. References to tenure are based on information supplied by the seller. Buyer should verify all information themselves by inspection or otherwise prior to a legal commitment to purchase. Photos and images are subject to copyright.