



Middleton Close

Rainham | Kent | ME8 9LR



Middleton Close

Rainham, Kent, ME8 9LR

Offers Over £485,000
Freehold

Robinson Michael and Jackson are delighted to offer this modern four bedroom detached situated in a quiet cul de sac in Rainham.

Benefitting from:

- 1263 Square Feet
- Easy Motorway Access
- Close to Schools
- Modern Kitchen
- Stunning En suite
- Downstairs Cloakroom
- Office
- Viewing Highly Recommended
- Council Tax: E
- EPC Rating: D



Accommodation

Porch Double glazed door to front.

Entrance Hall Stairs to first floor. Carpet. Radiator.

Ground Floor WC 1.96m x 0.84m (6'5" x 2'9") Double glazed window to side. Low level WC. Wall mounted basin. Tiled walls and flooring. Radiator.

Lounge 5.1m x 3.5m (16'9" x 11'6") Double glazed French doors to rear. Double glazed window to rear. Fireplace. Carpet. Radiator.

Dining Room 4.5m x 2.5m (14'9" x 8'2") Double glazed window to rear. Carpet. Radiator.

Study/Office 2.4m x 2.1m (7'10" x 6'11") Double glazed window to front. Carpet. Radiator.

Landing Double glazed window to front. Cupboard. Loft access. Carpet.

Bedroom One 3.76m x 3.35m (12'4" x 11') Double glazed window to front. Carpet. Radiator.

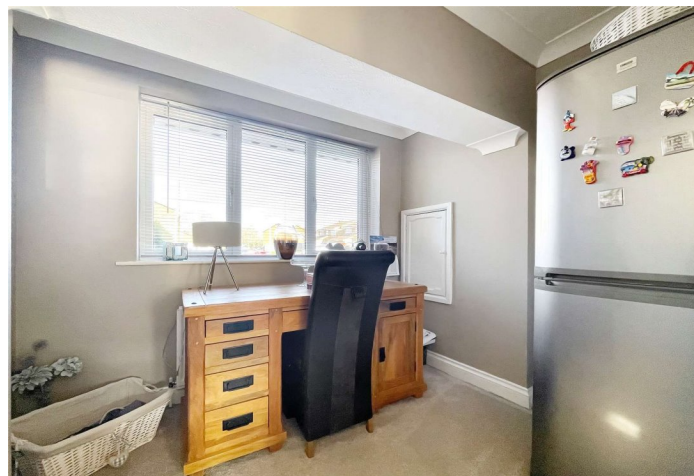
Ensuite 1.75m x 1.6m (5'9" x 5'3") Double glazed window to side. Low level WC. Pedestal wash hand basin. Walk in shower. Heated towel rail. Vinyl flooring.

Bedroom Two 3.5m x 2.7m (11'6" x 8'10") Double glazed window to rear. Carpet. Radiator.

Bedroom Three 2.8m x 2.7m (9'2" x 8'10") Double glazed window to rear. Carpet. Radiator.

Bedroom Four 2.5m x 2.4m (8'2" x 7'10") Double glazed window to rear. Carpet. Radiator.

Bathroom 3.2m x 2.7m (10'6" x 8'10") Double glazed window to front. Low level WC. Pedestal wash hand basin. Panelled bath with shower over. Tiled walls and flooring. Radiator.





Exterior

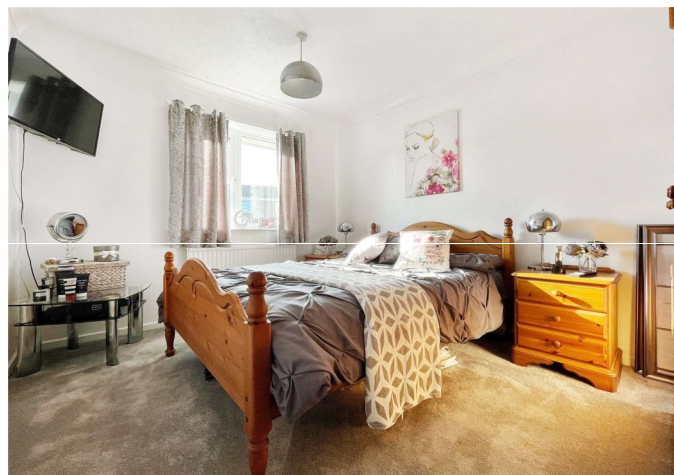
Rear Garden 11.89m (39') Side access. Patio area. Laid to lawn.

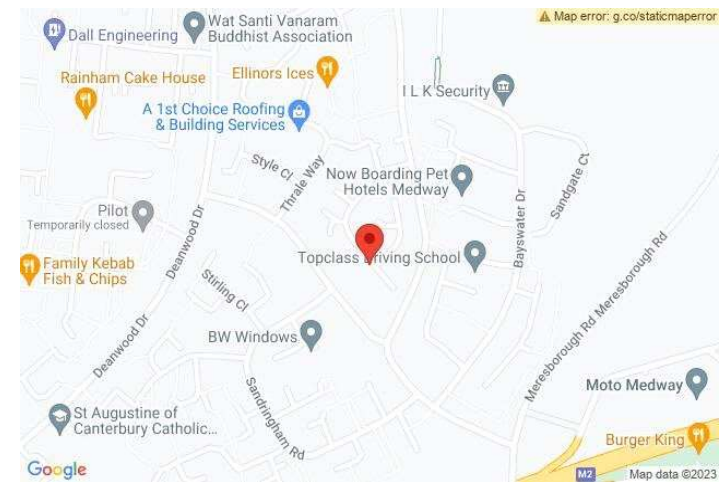
Parking Driveway to front.

Additional Information

Rainham and Gillingham lie in the Medway, both being circled by charming semi-rural villages. There are several shopping destinations for residents, including Hempstead Valley Shopping Centre and Gillingham Business Retail Park, as well as an abundance of local pubs and restaurants. Both towns are served by well-respected schools, including Rainham Mark Grammar.

Rainham and Gillingham have oodles of open space and facilities, including Capstone Country Park, Berengrave Nature Reserve, Riverside Country Park, the Planet Ice Skating Rink, the Ski & Snowboard centre and Great Lines Heritage Park





Important Notice

These particulars do not form part of an offer or contract and must not be relied upon as statements or representation of fact. Any areas, measurements, journey times or distances are approximate. The text, images, photographs and plans are for guidance only and are not necessarily comprehensive. It should not be assumed that the property has all necessary planning, building regulation or other consents and we have not tested any services, equipment or facilities. References to tenure are based on information supplied by the seller. Buyer should verify all information themselves by inspection or otherwise prior to a legal commitment to purchase. Photos and images are subject to copyright.



READY TO MOVE?
Scan to instruct us

FOR MORE INFORMATION CONTACT US TODAY.

Lee Franklin - Branch Manager

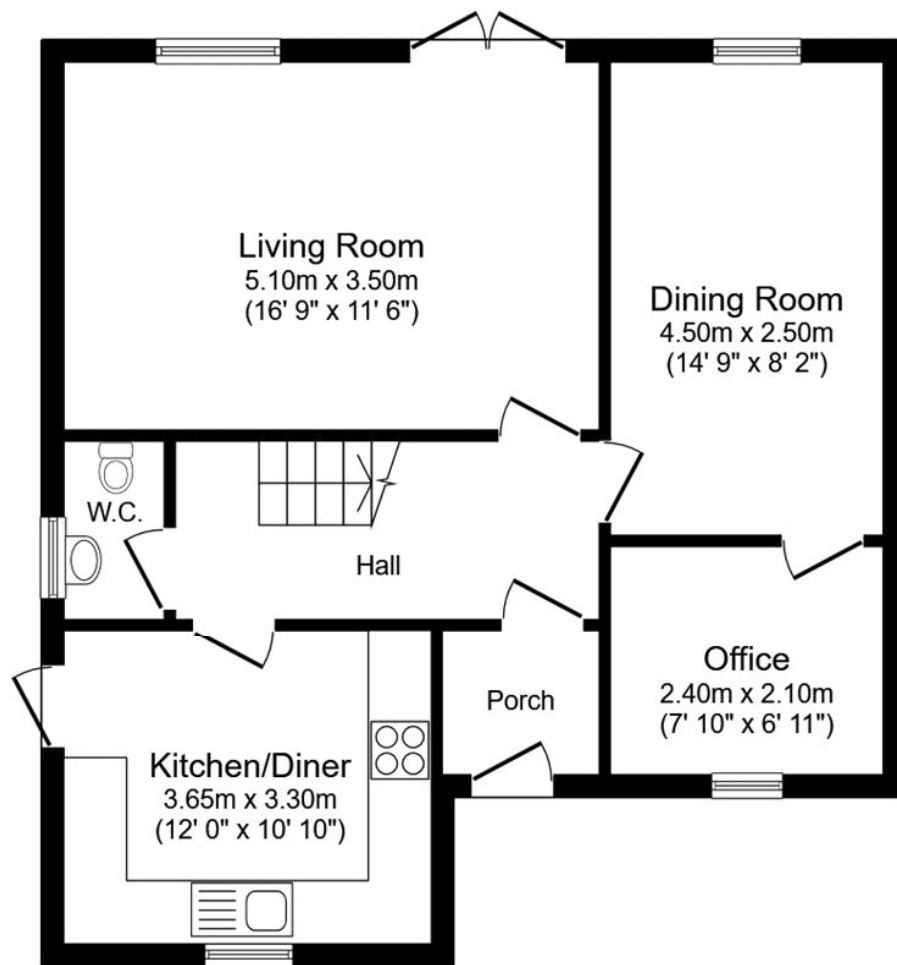
01634 263000

Robinson Michael & Jackson
17 High Street,
Rainham,
Kent ME8 7HX

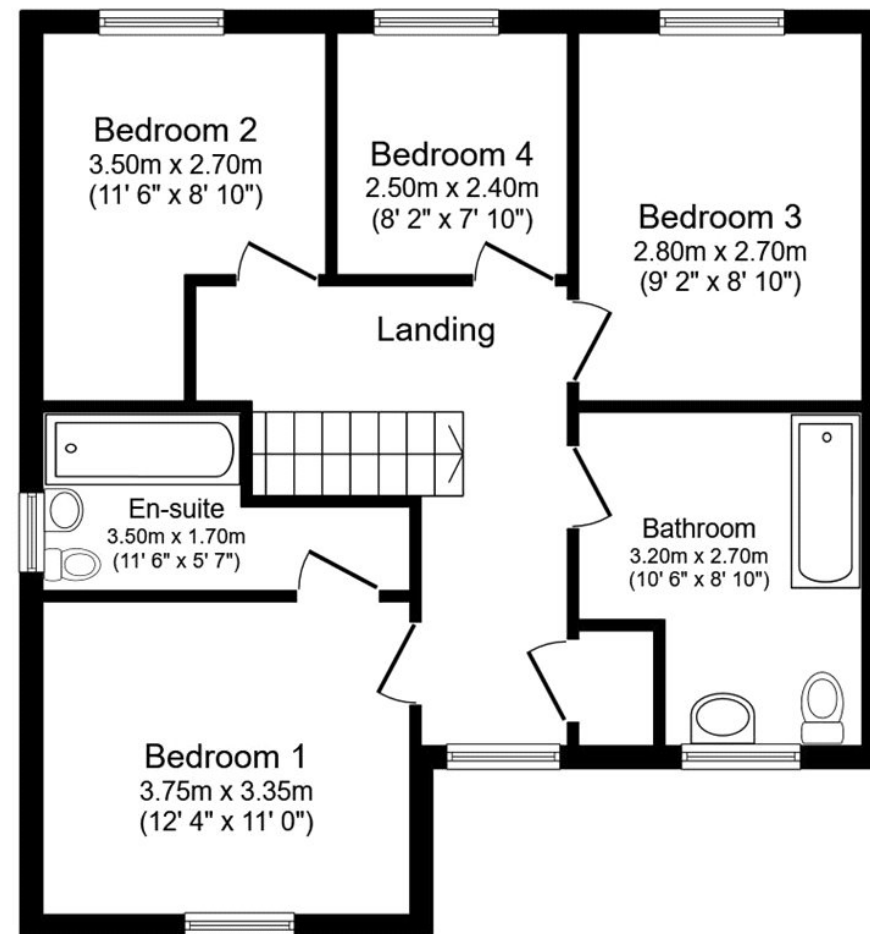
rainham@robinson-jackson.com

SALES | MORTGAGES | LEGALS

ROBINSON MICHAEL & JACKSON



Ground Floor



First Floor

Total floor area 117.3 sq.m. (1,263 sq.ft.) approx

This floor plan is for illustrative purposes only. It is not drawn to scale. Any measurements, floor areas (including any total floor area), openings and orientation are approximate. No details are guaranteed, they cannot be relied upon for any purpose and they do not form part of any agreement. No liability is taken for any error, omission or misstatement. A party must rely upon its own inspection(s). Plan produced for Your Move. Powered by www.focalagent.com

