



Datchet Road | London, SE6 4BY



5



1



2

Guide Price £600,000 - £650,000

Freehold

**ROBINSON-JACKSON**  
Our service will **move** you

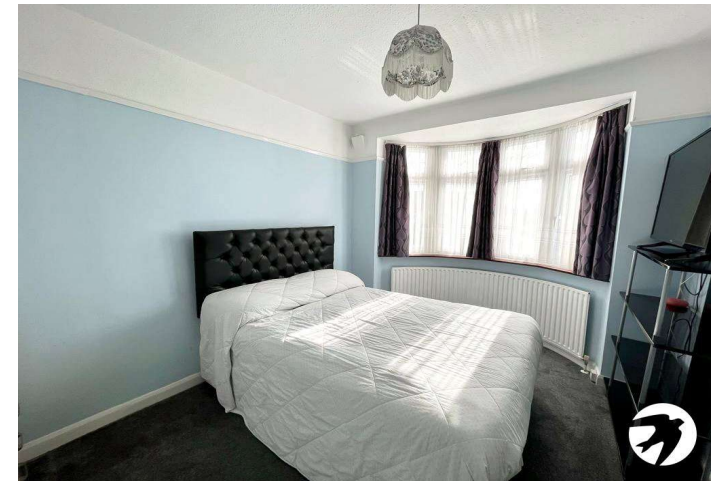


## Datchet Road, London

An extended five bedroom end of terrace house located on the borders of Catford and Forest Hill off Perry Hill. The property benefits from three reception rooms, a 19' kitchen, 70' rear garden and off street parking.

### Property Features

- End of terrace
- Five bedrooms
- Two reception rooms
- Ground floor cloakroom
- Off street parking
- 70' rear garden





## Interior

**PORCH:** Double glazed entrance door.

**ENTRANCE HALL:** Wooden front door with opaque inserts, double glazed window to side, radiator, fitted carpet, under stairs cloakroom, stairs to first floor, access to reception rooms and kitchen.

**THROUGH LOUNGE:** 7.34m x 3.05m (24'1" x 10') Double glazed bay window to front, fully fitted carpet, radiator, coved ceilings.

**RECEPTION ROOM 2:** 3.25m x 3.05m (10'8" x 10') Double glazed sliding doors to rear, fully fitted carpet, covings, access to kitchen.

**KITCHEN:** 6.02m x 1.57m (19'9" x 5'2") Double glazed door to rear and double glazed window to side, range of wall and base units with work top over, stainless steel sink unit with mixer tap, plumbed for washing machine, tumble dryer, integrated dishwasher, integrated gas hob with extractor hood over, built in double oven and space for microwave, spaces for fridge and freezer, radiator, tiled floor, spot light, tiled splash back.

**CLOAKROOM:** Double glazed window to side, low level WC, wash hand basin.

**LANDING:** Double glazed window to side, fitted carpet, access to all bedrooms and bathroom.

**BEDROOM 1:** 3.76m x 2.74m (12'4" x 9') Double glazed bay window to front, fully fitted carpet, radiator.

**BEDROOM 2:** 3.35m x 2.74m (11' x 9') Double glazed window to rear, fully fitted carpet, radiator.

**BEDROOM 3:** 3.66m x 2.31m (12' x 7'7") Sky light Velux window, radiator, fitted carpet, built in storage.

**BEDROOM 4:** 3.99m x 2.03m (13'1" x 6'8") Double glazed window to rear, fully fitted carpet, radiator.

**BEDROOM 5:** 2.29m x 2.13m (7'6" x 7') Double glazed window to front, fully fitted carpet, radiator, picture rail.

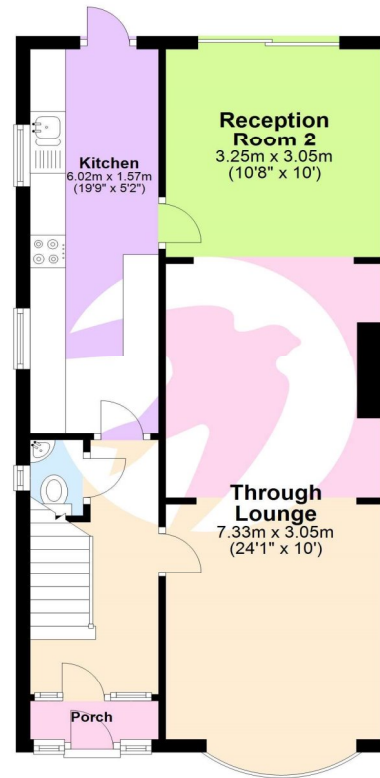
**BATHROOM:** 1.83m x 1.78m (6' x 5'10") Double glazed window to side, panel enclosed bath with shower attachment and glass shower screen, pedestal wash hand basin, low level WC, bidet, vinyl floor, tiled walls, spot lights.

## Exterior

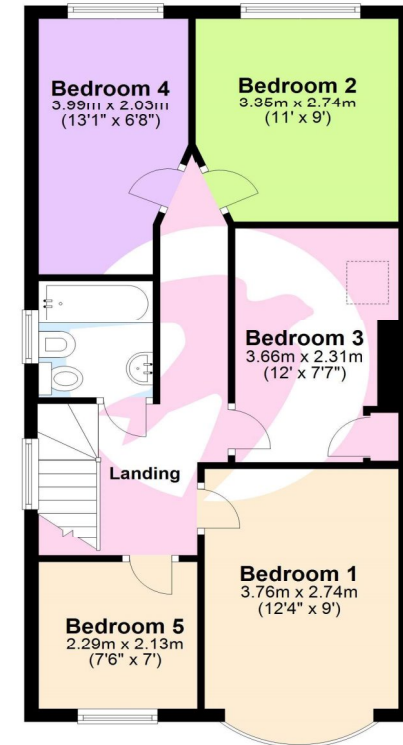
**GARDEN:** Approx. 70ft mainly laid to lawn, side access, garden shed, various plants and shrubs.

**OFF STREET PARKING** to front for 2 cars.

Ground Floor



First Floor

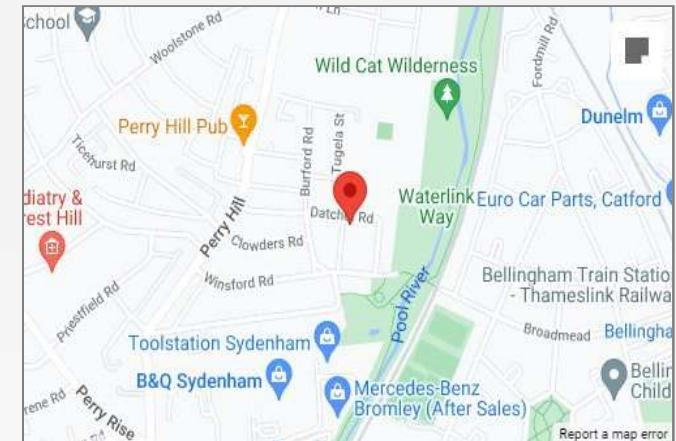






## Property Location

Datchet Road, London, SE6 4BY



## Location

Catford is growing in popularity among commuters as journeys from its two mainline stations can take as little as 10 minutes to Central London. The Broadway Theatre is an impressive Art Deco building, with a regular programme of shows and events. Catford's other premium attraction is Mountsfield Park – one of London's best open spaces and home of the annual People's Day. Catford's Black Cat sculpture remains a well-loved landmark.

## Additional Information

Local Authority: **London Borough of Lewisham** / Council Tax: **Band D** (£1,817 pa) / EPC Rating: **TBC**

**FOR MORE INFORMATION  
CONTACT US TODAY.**

020 8698 1234  
Robinson Jackson  
87 Rushey Green,  
Catford,  
London SE6 4AF  
catford@robinson-jackson.com

