



Anerley Park | London, SE20 8NN



Asking Price £330,000 Leasehold

ROBINSON-JACKSON
Our service will *move* you

Anerley Park, London

Attractive top floor Art Deco style purpose built flat offered chain free with two bedrooms, long lease, pleasant front communal garden, set within a highly desirable location a stone's throw away from Penge West Station, offering great transport links into London Bridge and East London via the Overground, conveniently located for local independent shops, eateries and bars, Crystal Palace Park

Property Features

- Council Tax: B
- EPC Rating: D
- Two Bedrooms
- Modern Purpose Built Flat
- Chain Free
- Leasehold
- Long Lease
- Top Floor
- Pleasant Communal Garden
- Double Glazing
- Laminate Flooring
- Ample Storage
- Comfortable Family Home



Interior

Communal Entrance

Entrance Hall Built in cupboard, laminate flooring

Lounge Double glazed window to front, laminate flooring, radiator

Kitchen Double glazed windows to side, laminate work surface, stainless steel butler sink and drainer, integrated stainless steel oven, hob and extractor, space for fridge freezer, space for washing machine, vinyl flooring

Master Bedroom Double glazed windows to rear, built in wardrobes, laminate flooring, radiator

Bedroom Two Double glazed windows to front, built in wardrobes, laminate flooring, radiator

Bathroom Double glazed windows to side, electric corner shower cubicle, panelled bath, wash hand basin sink, low flush wc, tiled flooring, heated towel rail, loft hatch

Exterior

Well-kept communal grounds

Leasehold Information

Time remaining on lease: Not Available

Ground Rent: Not Available

Service Charge: Not Available

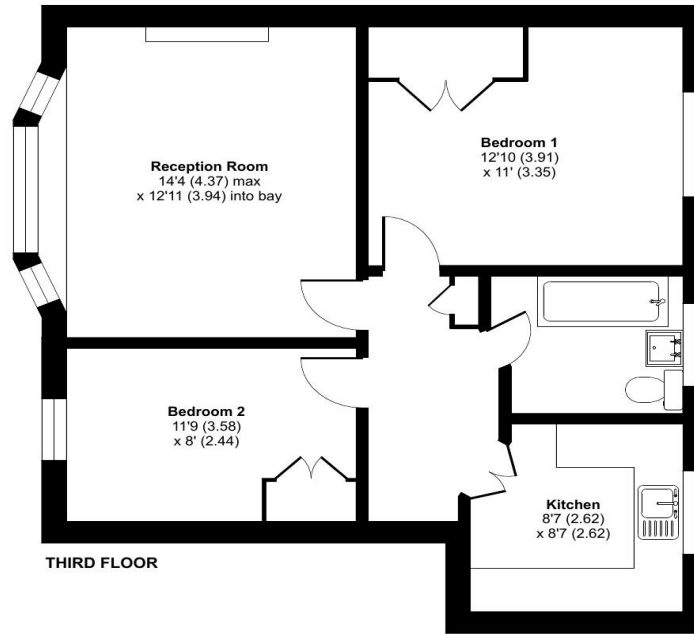
Additional Information

Ideal for Penge West Station

Conveniently located for local independent shops, eateries and bars, local high street shops and amenities and Crystal Palace Park

Approximate Area = 620 sq ft / 57.6 sq m

For identification only - Not to scale



THIRD FLOOR



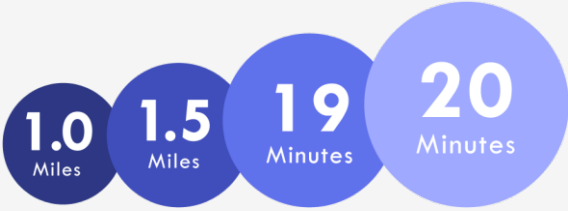
Floor plan produced in accordance with RICS Property Measurement Standards incorporating International Property Measurement Standards (IPMS2 Residential). © nrichcom 2023. Produced for Robinson Jackson.





Property Location

Anerley Park, London, SE20 8NN



Horniman Museum & Gardens Crystal Palace Canada Water Station Train to London Bridge

*All distances from branch postcode. Train time from nearest station.

**FOR MORE INFORMATION
CONTACT US TODAY.**

020 8776 6660
Robinson Jackson
256 Kirkdale,
Sydenham,
London SE26 4NL
sydenham@robinson-jackson.com



These particulars do not form part of an offer or contract and must not be relied upon as statements or representation of fact. Any areas, measurements, journey times or distances are approximate. The text, images, photographs and plans are for guidance only and are not necessarily comprehensive. It should not be assumed that the property has all necessary planning, building regulation or other consents and we have not tested any services, equipment or facilities. References to tenure are based on information supplied by the seller. Buyer should verify all information themselves by inspection or otherwise prior to a legal commitment to purchase. Photos and images are subject to copyright.