



Owen Close | Weldon, Ebbsfleet Valley, DA10 1AW



Guide Price: £625,000 - £650,000

Freehold

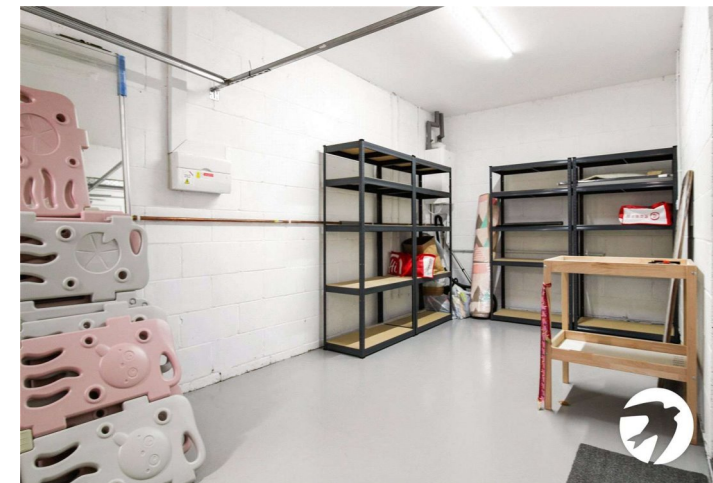
ROBINSON-JACKSON
Our service will *move* you

Owen Close, Weldon

Robinson Jackson are delighted to present this luxurious Redrow four bedroom detached home. 'The Marlow' is a fantastic versatile family home consisting of large kitchen/diner, utility room, ensuite to master bedroom, generous rear garden, garage and driveway to front for two cars. Situated on the sought after Castle Hill development within Ebbsfleet Garden City, ideally located for Cherry Orchard Primary School and local amenities. In our opinion, an ideal family home offering ample space. Call our Ebbsfleet Garden City office to find out more and book your viewing.

Property Features

- Garage & Driveway
- Integrated Appliances
- Fitted Wardrobes
- Utility Room
- Kitchen/Diner
- En-suite to Master Bedroom
- Within close proximity of Ebbsfleet International station
- Walking distance to Cherry Orchard Primary School



Interior

Entrance Hall: Stairs to first floor.

Lounge: 5.14m x 3.41m (16'10" x 11'2") Double glazed window to front. Radiator. Laminate flooring.

Kitchen/Diner: 4.53m x 4.20m (14'10" x 13'9") Double glazed sliding patio doors leading to garden. Range of matching wall and base units with complimentary work surface over. Stainless steel sink with drainer. Integrated electric double oven, gas hob and extractor. Integrated fridge freezer. Integrated dishwasher. Spotlights. Part tiled walls. Tiled flooring.

Cloakroom: 1.72m x 1.10m (5'8" x 3'7") Double glazed frosted window to rear. Low level WC. Pedestal wash hand basin. Tiled flooring.

Utility Room: 3.00m x 1.72m (9'10" x 5'8") Wall and base units with work surface over. Stainless steel sink with drainer. Space for washing machine. Tiled flooring.

Landing: Airing cupboard.

Bedroom One: 4.02m x 3.41m (13'2" x 11'2") Double glazed window to front. Built in wardrobes. Radiator. Carpet.

Ensuite Shower Room: 2.09m x 1.56m (6'10" x 5'1") Double glazed frosted window to front. Low level WC. Wash hand basin. Shower cubicle. Part tiled walls. Tiled flooring.

Bedroom Two: 3.33m x 3.21m (10'11" x 10'6") Double glazed window to rear. Radiator. Carpet.

Bedroom Three: 3.82m x 3.33m (12'6" x 10'11") Double glazed window to front. Built in wardrobes. Radiator. Carpet.

Bedroom Four: 3.27m x 3.13m (10'9" x 10'3") Double glazed window to rear. Radiator. Carpet.

Bathroom: 2.26m x 2.03m (7'5" x 6'8") Double glazed frosted window to side. Low level WC. Wash hand basin. Panelled bath with fitted shower and shower screen. Shaving point. Part tiled walls. Tiled flooring.





Exterior

Rear Garden: Mainly laid to lawn. Paved patio area. Timber shed.

Integral Garage: 6.07m x 3.08m

Private driveway.

Additional Information

Dartford Borough Council - Tax Band F

Total floor area: 111 sq. metres

Property Location

Owen Close, Weldon, Ebbsfleet Valley, DA10 1AW



**FOR MORE INFORMATION
CONTACT US TODAY.**

01322 941333

Robinson Jackson
67 Cherry Orchard,
Castle Hill,
Ebbsfleet Garden City,
DA10 1AD

ebbsfleetgardencity@robinson-jackson.com

