



Risedale Road | Bexleyheath, DA7 6LJ

 3  1  1 Asking Price £550k to £575k Freehold

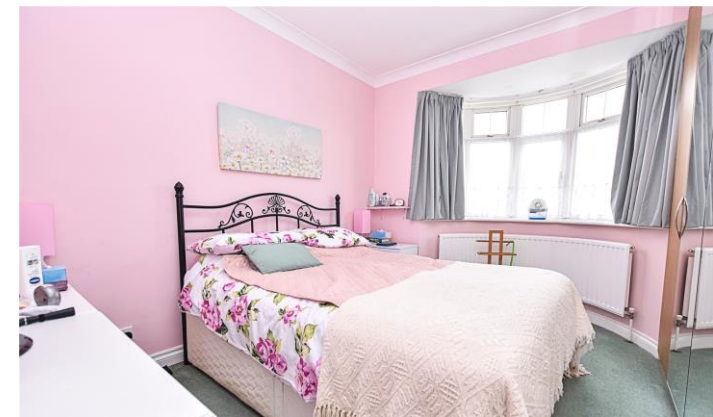
**ROBINSON-JACKSON**  
Our service will *move* you

## Risedale Road, Bexleyheath

PRIME LOCATION! Three bedroom detached bungalow on the ever popular " RISEDALE ROAD " walking distance to Barnehurst station available CHAIN FREE with ample amounts of parking.

### Property Features

- DETACHED BUNGALOW
- GARAGE
- CONSERVATORY
- THREE BEDROOMS
- SPACIOUS LOUNGE WITH BAY WINDOW.
- AMPLE AMOUNTS OF PARKING
- CHAIN FREE



## Interior

Entrance Hall

Lounge 4.83m x 3.8m (15'10" x 12'6")

Kitchen 4.32m x 2.36m (14'2" x 7'9")

Conservatory 5.23m x 4.14m (17'2" x 13'7")

Bedroom 1 4.06m x 3.28m (13'4" x 10'9")

Bedroom 2 3.33m x 2.64m (10'11" x 8'8")

Bedroom 3 3.15m x 2.64m (10'4" x 8'8")

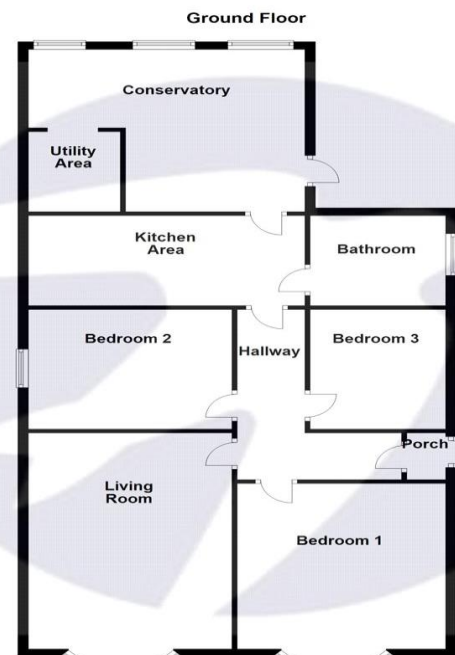
Bathroom 2.62m x 1.68m (8'7" x 5'6")

Garage 7.62m x 2.87m (25' x 9'5")

## Exterior

Ample Parking

Garage



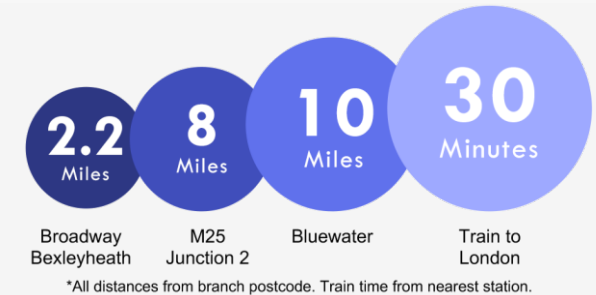
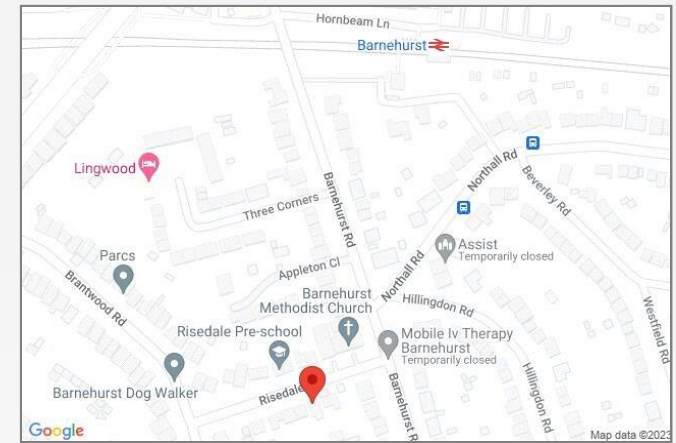
Please note that this is for illustration purposes only and should not be used as an exact representation of the property. All measurements are approximate.  
Plan produced using PlanUp.





## Property Location

Risedale Road, Bexleyheath, DA7 6LJ



**FOR MORE INFORMATION  
CONTACT US TODAY.**

020 8298 7000

Robinson Jackson  
124 Broadway,  
Bexleyheath,  
Kent DA6 7DQ

[bexleyheath@robinson-jackson.com](mailto:bexleyheath@robinson-jackson.com)

