



Woodbastwick Road | London, SE26 5LG

4 1 3

Guide Price £875,000 - £890,000
Freehold

ROBINSON-JACKSON
Our service will *move* you

Woodbastwick Road, London

Wonderful 1930's semi-detached house offered chain free with four bedrooms, off street parking, garage, pleasant front and rear garden, double glazing, and ample storage set within a highly desirable location, equidistance to Sydenham & Penge East Stations, conveniently located for local high street shops and amenities, Alexandra Recreation Ground and the award winning Mayow Park

Property Features

- Council Tax: E
- EPC Rating: D
- Double glazing
- Central heating
- Ample storage
- Chain free



Interior

Entrance Porch Double glazed door to front, two full height double glazed windows to front, tiled flooring.

Entrance Hall Part opaque glazed wooden entrance door, radiator, understairs storage cupboard, door to ground floor wc and garage.

Ground Floor Wc Opaque glazed window to side, wall mounted wash hand basin with mixer tap, low level wc.

Dining Room Double glazed door to side, double glazed sliding door to rear, double glazed windows to side and rear, radiator, carpet, wood panelled ceiling, open to kitchen.

Kitchen Double glazed window to side, range of fitted white high gloss wall and base units with work surface over, oven, hob and extractor fan to remain, one and a half bowl stainless steel sink unit with mixer tap, plumbing for dish washer, tiled splash back, wood panelled ceiling.

Lounge Double glazed window to front, radiator, coved and textured ceiling.

Reception Room Two radiators, textured and beamed ceiling.

Landing Part opaque and leaded glazed window to side with secondary glazing.

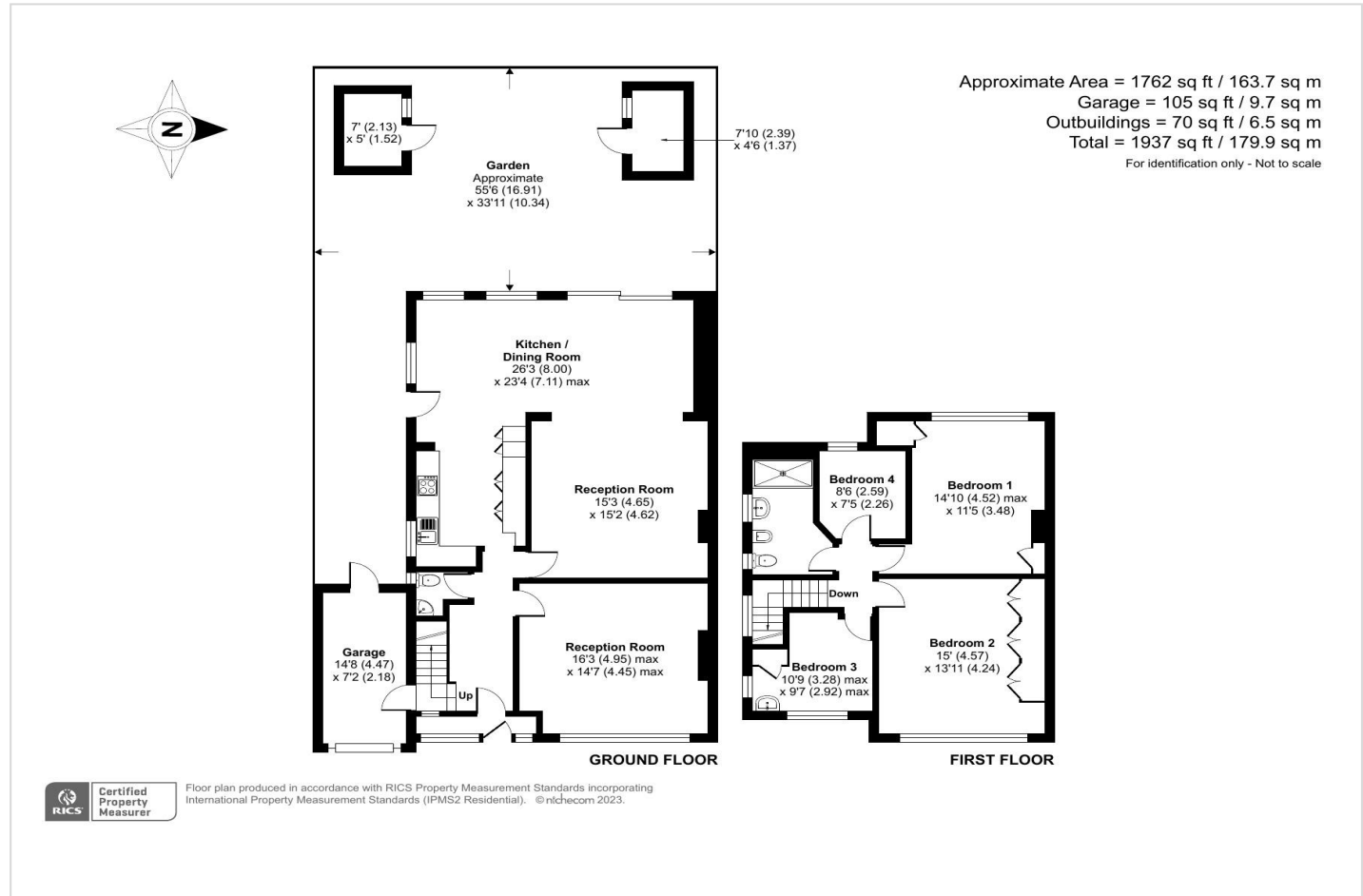
Bedroom One Double glazed window to front, radiator, full length and full height fitted wardrobe, carpet, coved ceiling.

Bedroom Two Glazed window to front with leaded light and secondary glazing, radiator, two storage cupboards.

Bedroom Three Double glazed windows to front and side, radiator, carpet.

Bedroom Four Opaque glazed window to rear with leaded light and secondary glazing, radiator.

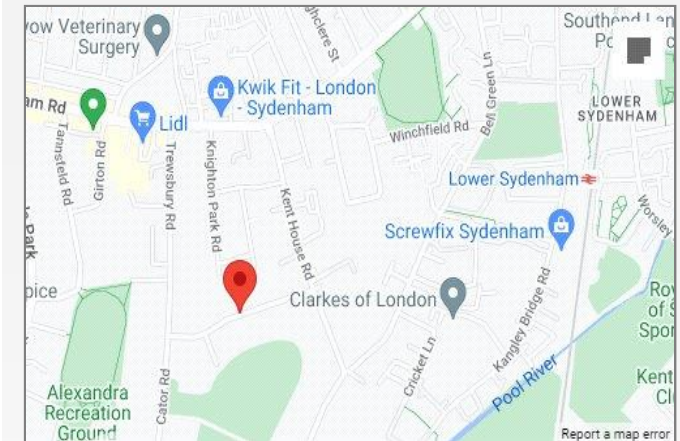
Shower Room Two opaque glazed windows with leaded light and secondary glazing to side, radiator, four piece suite comprising of: walk in double tray shower cubicle with mixer shower over and tiled walls, pedestal wash hand basin with mixer tap, bidet and low level wc, tiled walls.





Property Location

Woodbastwick Road, London, SE26 5LG



Exterior

Rear Garden Patio, path to rear, mainly laid to lawn with shrub borders, further patio area.

Garage Wooden double doors to front, wooden door to rear, power and light.

Driveway Block paved driveway offering off street parking.

Additional Information

Off street parking

Garage

55' Rear garden

Wonderful family home

Equidistance to Sydenham & Penge East Station

Conveniently located for local high street shops and amenities, Alexandra Recreation Ground and the award winning Mayow Park

**FOR MORE INFORMATION
CONTACT US TODAY.**

020 8776 6660

Robinson Jackson
256 Kirkdale,
Sydenham,
London SE26 4NL

sydenham@robinson-jackson.com

