



Invicta Road | Dartford, Kent, DA2 6AZ



Offers In Excess Of £300,000  
Freehold

**ROBINSON-JACKSON**  
Our service will *move* you



## Invicta Road, Dartford

Robinson Jackson are proud to present this recently re-furbished two double bedroom freehold period terrace house located in Stone. Ideally located for Transport links and popular schools.

### Property Features

- Council Tax: B
- EPC Rating: C
- Private driveway
- Large private garden
- Recently re-furbished
- Above average EPC rating of C
- Large kitchen area



## Interior

**Living Room** 3.33m x 3.67m (10'11" x 12') Double glazed windows, radiators fitted to wall, up to date garden and painted walls.

**Kitchen** 3.35m x 3.67m (11' x 12') Double glazed windows.

**Front bedroom** 3.35m x 3.58m (11' x 11'9") Double glazed windows, radiators on the wall, up to date carpet and painted walls.

**Back bedroom** 3.35m x 3.59m (11' x 11'9") Double glazed windows, radiators on the wall, up to date carpet and painted walls.

## Exterior

Rear Garden: Approx 100'. Laid to lawn with a patio.

Front Garden: Shingled area with potential for driveway (STPP)

**Ground Floor**  
Approx. 34.1 sq. metres (367.5 sq. feet)

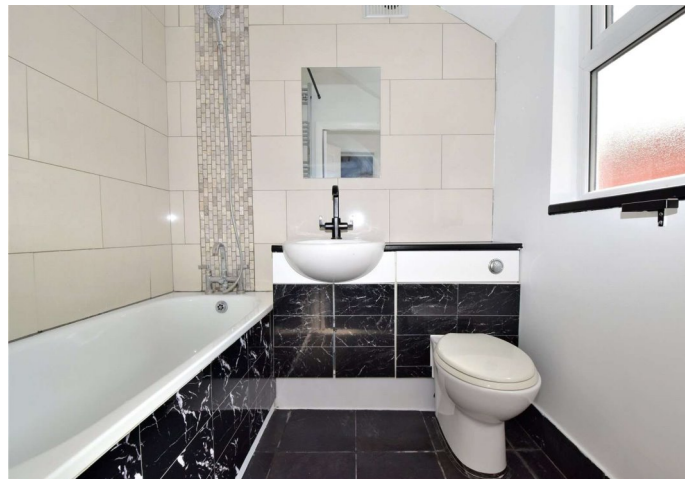


**First Floor**  
Approx. 27.6 sq. metres (296.5 sq. feet)



Total area: approx. 61.7 sq. metres (664.1 sq. feet)

This Floorplan is for illustrative purposes only  
Plan produced using PlanUp.

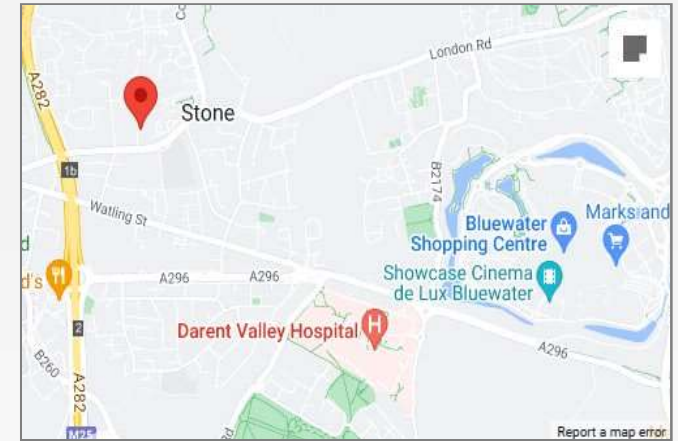






## Property Location

Invicta Road, Dartford, Kent, DA2 6AZ



\*All distances from branch postcode. Train time from nearest station.

## Additional Information

Total interior size: 62 sqm.

The boiler is located in the kitchen.

**FOR MORE INFORMATION  
CONTACT US TODAY.**

01322 281281

Robinson Jackson  
22 Market Street,  
Dartford,  
Kent DA1 1EZ

[dartford@robinson-jackson.com](mailto:dartford@robinson-jackson.com)

