



Runnymede Court | Lunedale Road, Fleet Estate, DA2 6NA



Asking Price £150,000

Leasehold

**ROBINSON-JACKSON**  
Our service will *move* you



# Runnymede Court, Lunedale Road

Robinson Jackson are delighted to market this first floor two bedroom retirement home available for the over 55s.

## Property Features

- Council Tax: C
- EPC Rating: C
- First Floor Apartment
- Communal Gardens
- Walk In Bath With Separate Shower
- Residents Must Be A Minimum Age Of 55 Years Old
- No Onward Chain
- Video Intercom System



## Interior

**Entrance Hall:** Double glazed entrance door. Electric storage heater. Carpet. Carpeted stairs to first floor. Electric fuse board.

**Landing:** Coved ceiling. Access to loft. Electric storage heater. Cupboard housing hot water cylinder. Storage cupboard. Warden call button.

**Living Room:** Double glazed box bay window to front. Double glazed window to front. Coved ceiling. Electric storage heater. Carpet. Large storage cupboard over the stairs.

**Kitchen Breakfast Room:** Double glazed window to rear. Coved ceiling. Matching range of wall and base units. Complimentary work-surfaces. Single drainer sink unit. Built in electric oven. Four ring electric hob. Cooker hood with light. Plumbing for washing machine. Space for fridge freezer. Tiled splash backs. Breakfast bar. Carpet.

**Bedroom One:** Double glazed window to rear. Coved ceiling. Electric storage heater. Carpet. Built in range of bedroom furniture.

**Bedroom Two:** Double glazed window to rear. Coved ceiling. Electric storage heater. Carpet.

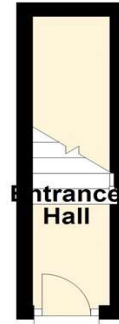
**Bathroom:** Coved ceiling. Extractor fan. Vanity wash hand basin. Walk in bath. Separate electric shower over. Low level WC. Electric heated towel rail. Part tiled walls. Carpet.

## Exterior

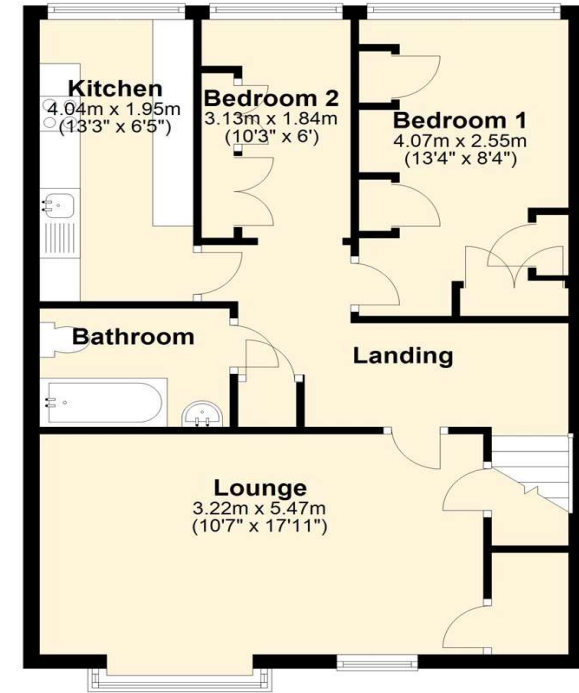
**Parking:** Resident parking spaces.

**Gardens:** Communal gardens.

**Ground Floor**  
Approx. 3.9 sq. metres (42.3 sq. feet)



**First Floor**  
Approx. 59.1 sq. metres (636.5 sq. feet)



Total area: approx. 63.1 sq. metres (678.8 sq. feet)

This Floorplan is for illustrative purposes only  
Plan produced using PlanUp.

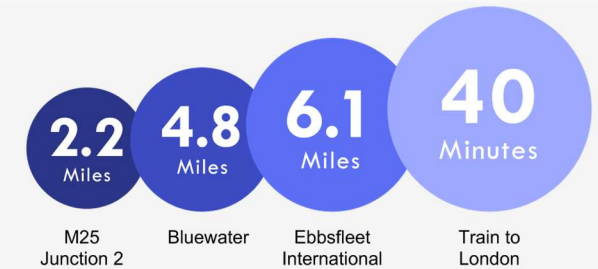






## Property Location

Runnymede Court, Lunedale Road, Fleet Estate, DA2 6NA



\*All distances from branch postcode. Train time from nearest station.

## Leasehold Information

Time remaining on lease: Approx. 64 years and 4 months

Ground Rent: Not Available

Service Charge: £2,808 Per Annum

Ground Rent Review Date:

## Additional Information

The property measures 61 square metres.

Service Charge - £2808 per annum.

The property benefits from use of a communal garden.

**FOR MORE INFORMATION  
CONTACT US TODAY.**

01322 281281

Robinson Jackson  
22 Market Street,  
Dartford,  
Kent DA1 1EZ

[dartford@robinson-jackson.com](mailto:dartford@robinson-jackson.com)

