



Highfield Avenue | Green Street Green, Kent, BR6 6LE



Offers over £700,000 Freehold

ROBINSON-JACKSON
Our service will *move* you

Highfield Avenue

Green Street Green

An opportunity to purchase this wonderful detached and immaculately presented three bedroom chalet style bungalow that offers spacious and versatile family accommodation in a sought after location.

Property Features

- Approx 1300 Sq Feet Of Accommodation
- A Wealth Of Charming Features
- Detached
- Versatile Layout With Potential To Reconfigure
- Well Presented Throughout
- A New Combi-Boiler Installed 2 Years Ago
- Study
- First Floor WC
- Balcony With Decking
- Large Frontage
- Council Tax: E
- EPC Rating: E



Interior

Entrance Hall: Double glazed composite door and double glazed opaque window. Radiator and wood laminate flooring.

Ground Floor Bathroom: Fitted with a walk in shower cubicle, panelled bath, pedestal wash hand basin and wc. Heated towel rail. Double glazed opaque window.

Reception Area: 4.06m x 3.73m (13'4" x 12'3") Double glazed bay window to front, radiator and wood laminate flooring. Large archway to:-

Additional Reception Area: 4.11m x 3.56m (13'6" x 11'8") Double glazed bay window to front, feature fireplace, stairs to First floor, radiator and wood laminate flooring. Double glazed door to front.

Study: 3.2m x 2.77m (10'6" x 9'1") Radiator and wood laminate flooring. Double glazed sliding door opening into:-

Kitchen/Breakfast Room: 5.94m x 4.01m (19'6" x 13'2") (L-shaped and maximum dimensions). Fitted with a range off wall, base and display units with work surfaces. Range cooker, extractor canopy, fridge freezer, washing machine and dishwasher all to remain. Ceramic sink unit & drainer. Space for table & chairs. With window and double doors to the courtyard.

Lounge/Diner 6.55m x 2.87m (21'6" x 9'5") (Maximum dimensions). Two Velux windows. Double glazed French doors opening onto the courtyard. Space for table & chairs. Radiator and wood laminate flooring. Double glazed door to side. Access to :-

Bedroom: 4.11m x 2.67m (13'6" x 8'9") (Maximum dimensions). Double glazed window overlooking the rear garden, radiator and wood laminate flooring.

First Floor Landing: With fitted carpet.

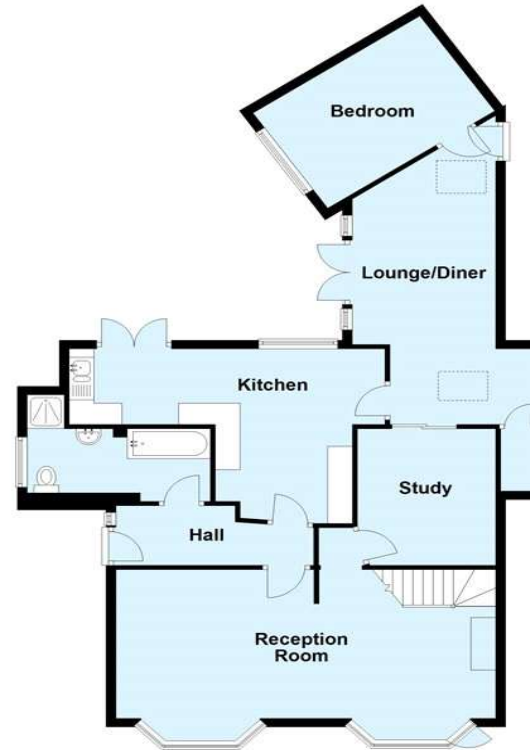
Bedroom: 3.12m x 3.12m (10'3" x 10'3") Mirror fronted fitted wardrobes, Radiator and wood laminate flooring. Double glazed door opening onto:-

Balcony: With composite decking and pleasant far reaching overviews.

En-Suite: With wc and wash hand basin.

Bedroom: 4.1m x 1.96m (13'5" x 6'5") (Maximum dimensions). Restricted head room. Double glazed window to front. Fitted carpet.

Ground Floor
Approx. 100.2 sq. metres (1078.7 sq. feet)



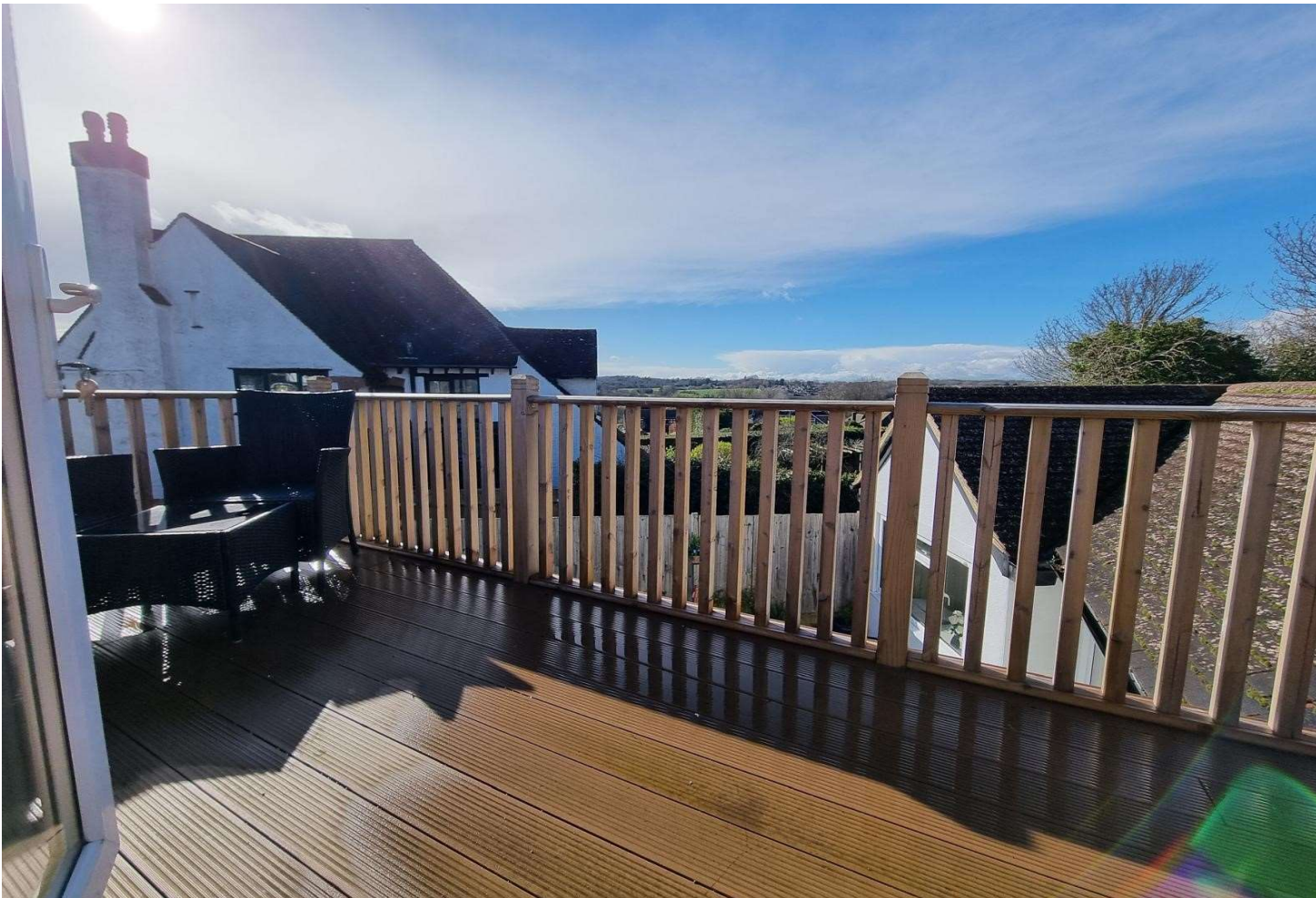
First Floor
Approx. 25.9 sq. metres (279.2 sq. feet)



Total area: approx. 126.2 sq. metres (1357.9 sq. feet)

This plan is for general layout guidance and may not be to scale.
Plan produced using PlanUp.





Exterior

Externally there is a large garden to the front that is well established with a variety of shrubs, trees and a lawn. With a sunny courtyard garden to the rear.

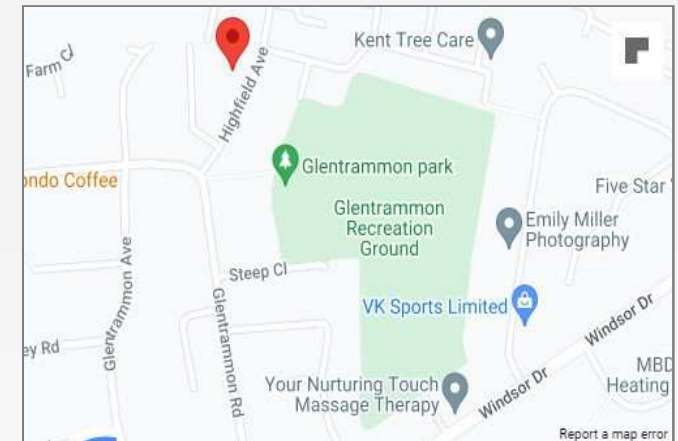
Front Driveway: With private gates and a gravel driveway.

Additional Information

The property is situated in a popular road that is conveniently located for local shops in Green Street Green including Waitrose. Orpington & Chelsfield Stations are also easily accessible.

Property Location

Highfield Avenue, Green Street Green, Kent, BR6 6LE



**FOR MORE INFORMATION
CONTACT US TODAY.**

01689 833322

Robinson Jackson
292 High Street,
Orpington,
Kent BR6 0NF

orpington@robinson-jackson.com

