



Loose Road | Maidstone, Kent, ME15 9UW

 3  2  3 Offers in excess of £350,000 Freehold

**ROBINSON MICHAEL & JACKSON**   
Our service will **move** you



## Loose Road, Maidstone

Three bedroom End of terrace Cottage situated in the heart of Loose village.

Renovated to high standard throughout, while still maintaining its original features. Viewing is highly recommended.

### Property Features

- Council Tax: B
- EPC Rating: C
- High specification throughout
- Original features
- NO CHAIN
- Catchment to Loose Primary School
- Period Cottage in Village location
- Two bathrooms
- Close to local amenities, shops, pub & post office





## Interior

**Lounge** 3.73m x 2.8m (12'3" x 9'2") Open planned with dining room, window to the front, leads upstairs

**Dining Room** 2.7m x 2.8m (8'10" x 9'2") Open plans with living room/kitchen

**Kitchen** 3.05m x 2.13m (10' x 7') Window to the rear, door leading out to the garden, integrated appliances

**Ground Floor WC** 0.88 x 1.06 Off of living room, Basin & WC

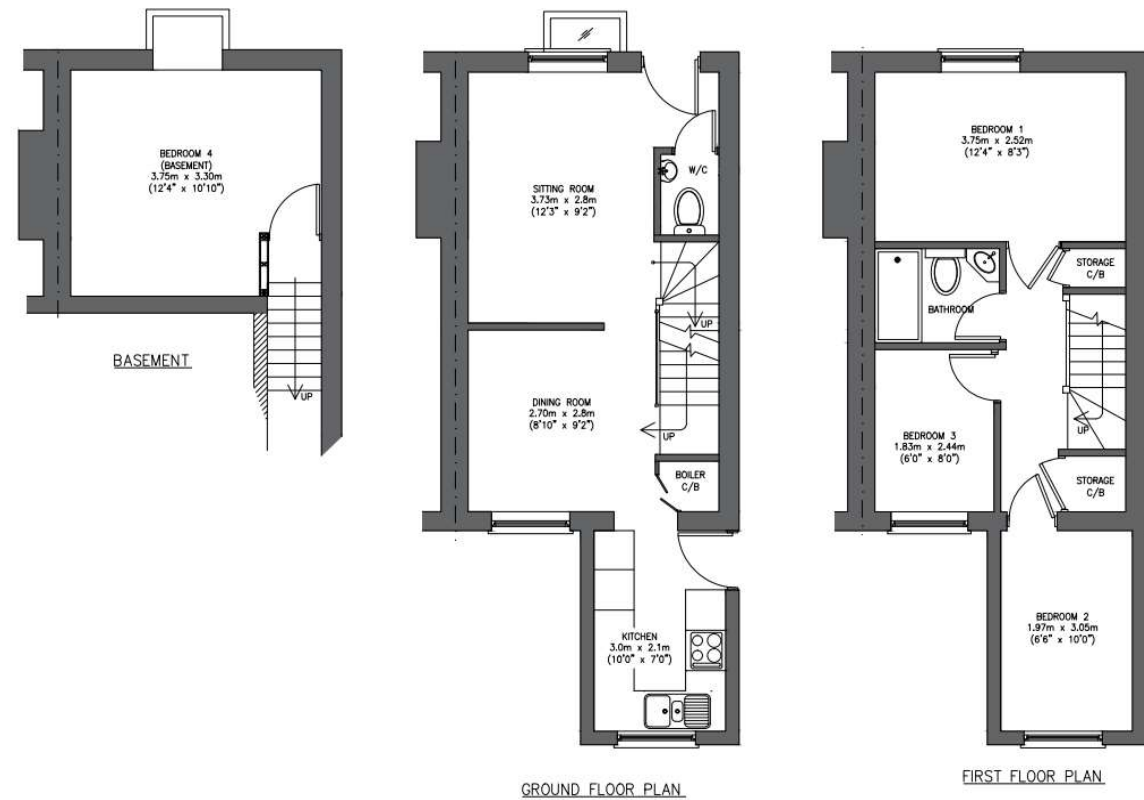
**Bedroom 1** 3.76m x 2.51m (12'4" x 8'3")  
Window to the front, double bedroom

**Bedroom 2** 1.97m x 3.05m (6'6" x 10')  
Window to the front

**Bedroom 3/Study** 1.83m x 2.44m (6' x 8')  
Window to the rear

**Bedroom 4/Basement** 3.76m x 3.3m (12'4" x 10'10") Double bedroom, window to the front

**Bathroom** 1.82 x 1.5 Shower over bath, basin & WC

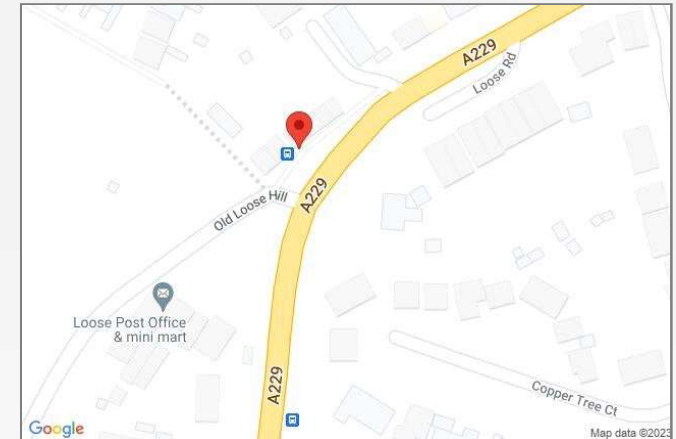






## Property Location

Loose Road, Maidstone, Kent, ME15 9UW



\*All distances from branch postcode. Train time from nearest station.

**FOR MORE INFORMATION  
CONTACT US TODAY.**

01622 476666  
Robinson Michael & Jackson  
15A King Street  
Maidstone,  
Kent ME14 1BA  
[maidstone@robinson-jackson.com](mailto:maidstone@robinson-jackson.com)

