



“The Tillman” Alkerden Heights, Castle Hill | Ebbsfleet Valley, DA10 1AD



3



1



1

£449,995

Freehold

**ROBINSON-JACKSON**  
Our service will *move* you

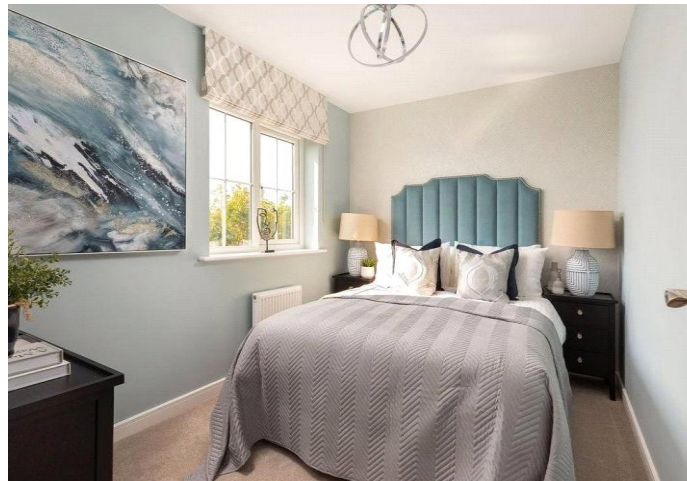
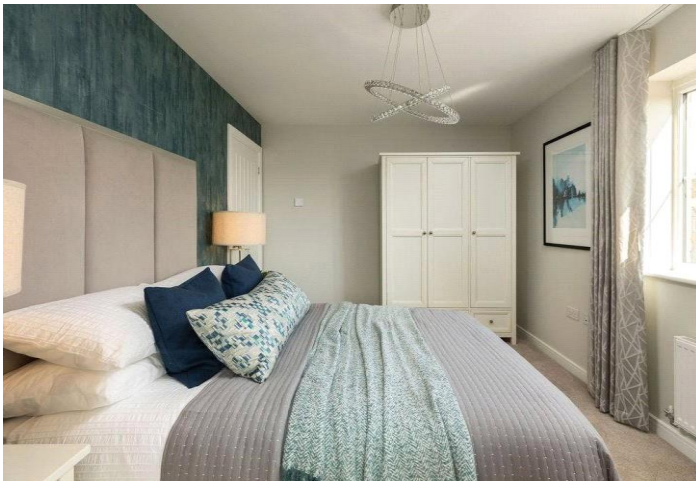


# Castle Hill,

Robinson Jackson are delighted to present this stunning 'new build' three bedroom home located in 'Alderden' part of the wider Ebbsfleet Garden City. Conveniently located for primary schools, local amenities and within easy reach of Ebbsfleet International station, Bluewater shopping centre and A2/M25. "The Tillman" is a charming 'Bellway' 3-bedroom home that features an open-plan living and dining room, a front-facing kitchen with integrated appliances, and a well-equipped family bathroom. The property also comes with TWO parking spaces. If you are looking for a community feel and a development with an exciting future get in touch with our Robinson Jackson team to find out more.

## Property Features

- Three bedroom family home
- Two parking spaces
- Integrated Zanussi appliances
- Roca sanitaryware & wall tiles
- Close proximity to Ebbsfleet International station
- Good transport links to A2/M25





## Interior

**Entrance Hall:**

**Cloakroom:**

**Lounge:**

**Kitchen/Dining:**

**Bedroom One:**

**Bedroom Two:**

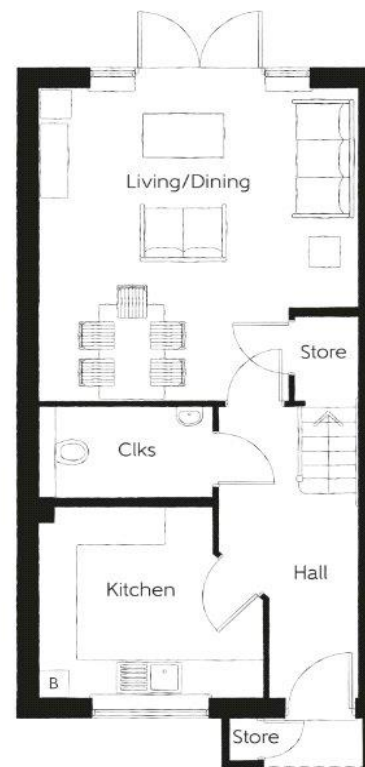
### Bedroom Three:

**Bathroom:**

## Exterior

Two off-street parking spaces

### Rear Garden





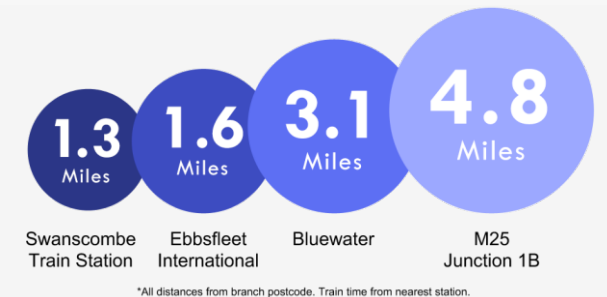
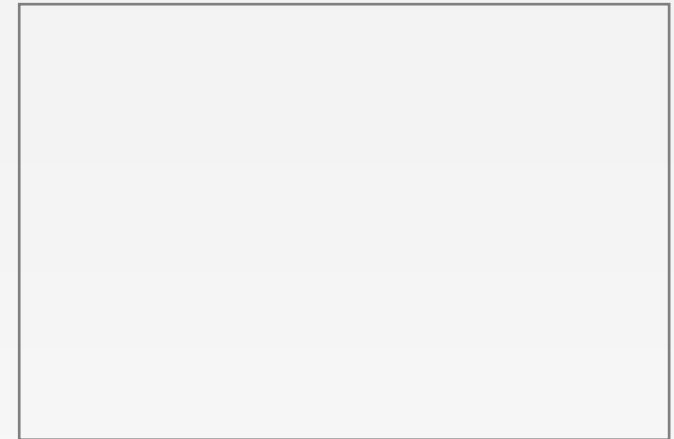
## Additional Information

Dartford Borough Council - Tax Band TBC

Total floor area: 94 sq. metres

## Property Location

Castle Hill, Ebbsfleet Valley, DA10 1AD



**FOR MORE INFORMATION  
CONTACT US TODAY.**

01322 941333

Robinson Jackson  
67 Cherry Orchard,  
Castle Hill,  
Ebbsfleet Garden City,  
DA10 1AD

[ebbsfleetgardencity@robinson-jackson.com](mailto:ebbsfleetgardencity@robinson-jackson.com)



These particulars do not form part of an offer or contract and must not be relied upon as statements or representation of fact. Any areas, measurements, journey times or distances are approximate. The text, images, photographs and plans are for guidance only and are not necessarily comprehensive. It should not be assumed that the property has all necessary planning, building regulation or other consents and we have not tested any services, equipment or facilities. References to tenure are based on information supplied by the seller. Buyer should verify all information themselves by inspection or otherwise prior to a legal commitment to purchase. Photos and images are subject to copyright.