



Tennison Way | Maidstone, Kent, ME15 9GE



4



2



2

Guide Price £375,000 - £400,000

Freehold

ROBINSON MICHAEL & JACKSON

Our service will **move** you

Tennison Way, Maidstone

GUIDE PRICE £375,000 - £400,000

Four-bedroom End of Terrace town house benefitting from off-street parking, spacious living accommodation and south facing private rear garden.

Property Features

- Council Tax: D
- EPC Rating: C
- Four bedrooms
- Exclusive low mortgage rates available on this property
- End of Terrace
- Situated over three floors
- Two Bathrooms & W/C
- South facing Private rear Garden
- Off-street parking
- Garage



Interior

Lounge 4.8m x 3.6m (15'9" x 11'10") Windows to the rear, located on the first floor

Kitchen/Dining Room 4.8m x 3.7m (15'9" x 12'2") Window to the rear, double doors leading out to the garden, integrated appliances, located on ground floor

Downstairs WC Basin & WC, on ground floor

Bedroom 1 4.8m x 3.1m (15'9" x 10'2") Window to the front, benefits from en-suite, built in wardrobes, located on third floor

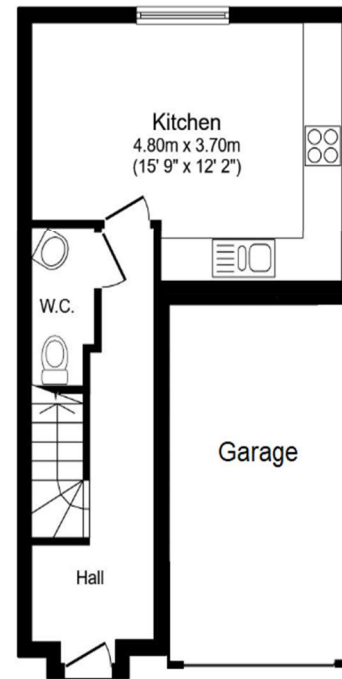
En-Suite 2.1m x 1.75m (6'11" x 5'9") Bath, basin & WC

Bedroom 2 3.96m x 2.8m (13' x 9'2") Window to the front, double bedroom, located on first floor

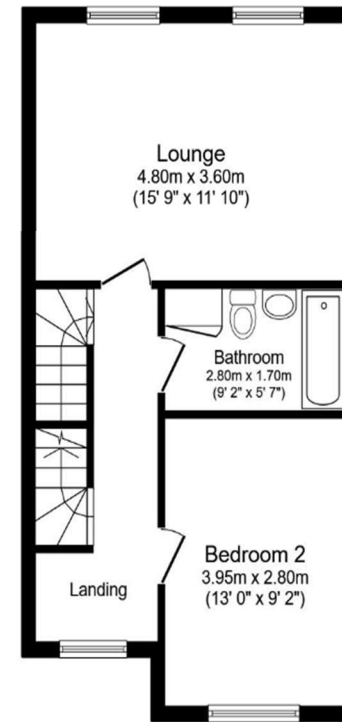
Bedroom 3 3.2m x 2.8m (10'6" x 9'2") Window to the rear, double bedroom, built in storage cupboard, located on third floor

Bedroom 4 3.8m x 2.1m (12'6" x 6'11") Window to the rear, double bedroom, located on third floor

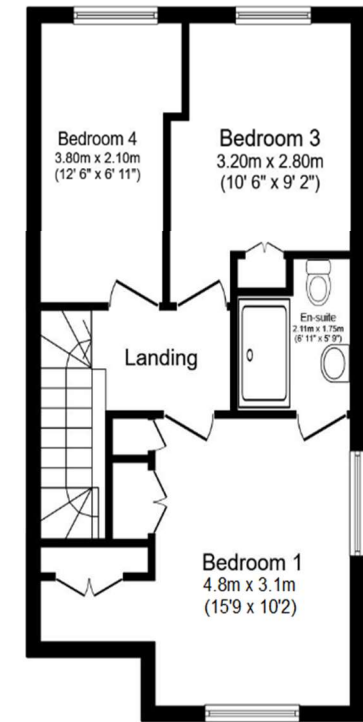
Bathroom 2.8m x 1.7m (9'2" x 5'7") Walk in shower, bath, basin & WC



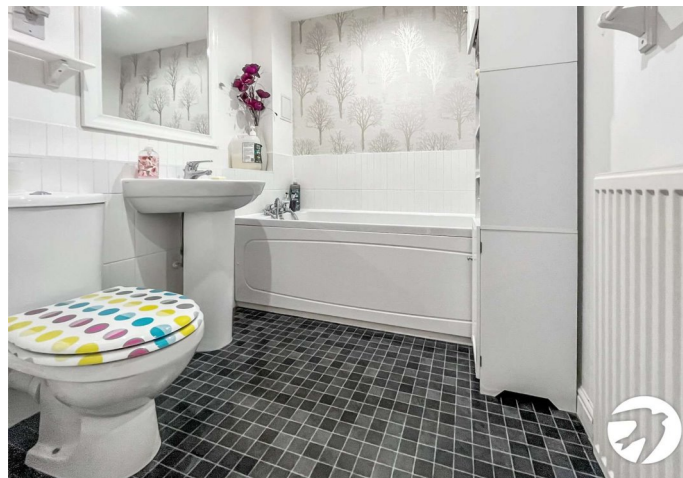
Ground Floor



First Floor



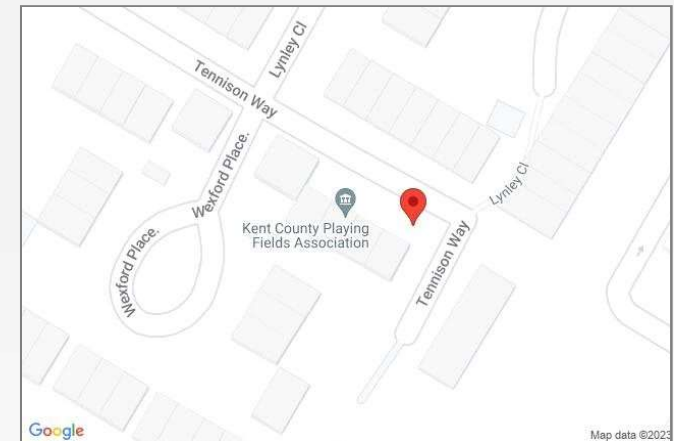
Second Floor





Property Location

Tennison Way, Maidstone, Kent, ME15 9GE



READY TO MOVE?
Scan to instruct us

**FOR MORE INFORMATION
CONTACT US TODAY.**

01622 476666
Robinson Michael & Jackson
15A King Street
Maidstone,
Kent ME14 1BA
maidstone@robinson-jackson.com

