



Tonbridge Road | Maidstone, Kent, ME16 8JS



Offers Over £500,000 Freehold

ROBINSON MICHAEL & JACKSON

Our service will *move* you

Tonbridge Road, Maidstone

Welcome to this fully renovated 1930's style four-bedroom detached property. With ample parking and a convenient location near motorway links, schools and Maidstone town centre.

Property Features

- Council Tax:
- EPC Rating: D
- OFFERS OVER £500,000
- Finished to a high standard throughout
- Ample parking
- No Chain
- Next to Clare park offering Tennis courts, bowls club and football court.
- Bi-fold doors in kitchen, leads to garden



Interior

Lounge 4.55m x 3.8m (14'11" x 12'6") Bay window to the front, fireplace

Kitchen/Dining Room 7.34m x 4.4m (24'1" x 14'5") Open planned, doors leading out into garden, integrated appliances

Bedroom 1 4.4m x 3.8m (14'5" x 12'6") Window to the rear, benefits from en-suite, double bedroom

En-Suite Walk in shower, basin & WC

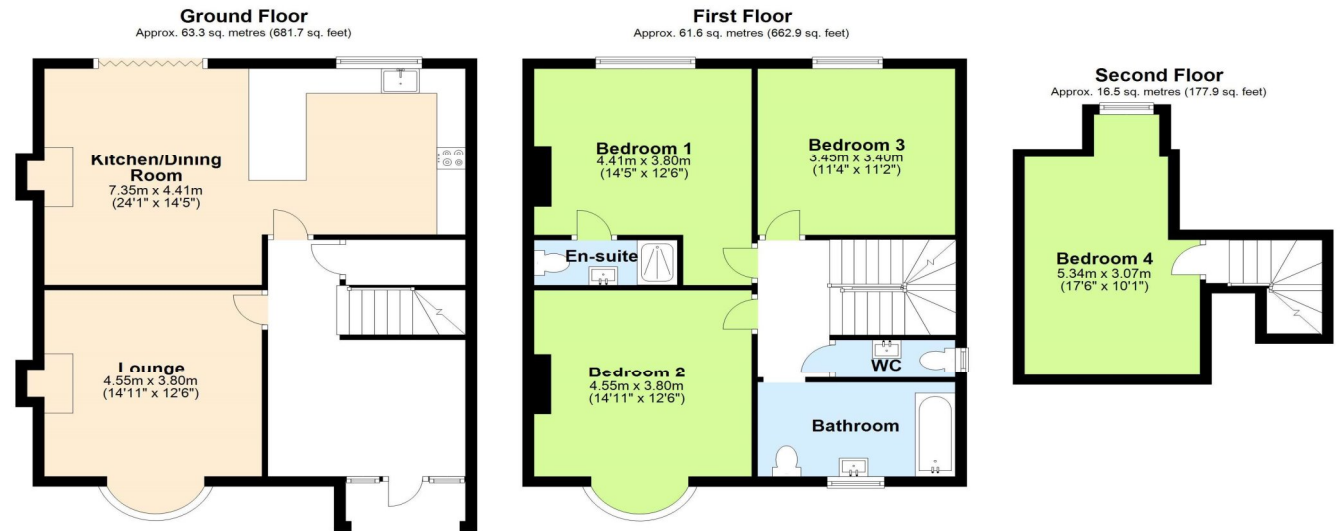
Bedroom 2 4.55m x 3.8m (14'11" x 12'6") Bay window to the front, double bedroom

Bedroom 3 3.45m x 3.4m (11'4" x 11'2") Window to the rear, double room

Bedroom 4 5.33m x 3.07m (17'6" x 10'1") Window to the rear, double bedroom, located on second floor

Bathroom Shower over bath, basin & WC, window to the front

WC Window to the side, basin & WC



Total area: approx. 141.4 sq. metres (1522.5 sq. feet)

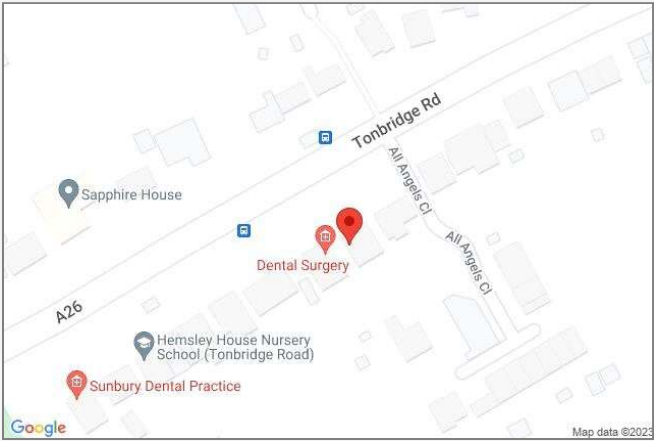
Previous plan
Plan produced using PlanUp.





Property Location

Tonbridge Road, Maidstone, Kent, ME16 8JS



Scan for the latest properties...

Follow us on **facebook** for early access to new properties for sale.



FOR MORE INFORMATION CONTACT US TODAY.

01622 476666
Robinson Michael & Jackson
15A King Street
Maidstone,
Kent ME14 1BA
maidstone@robinson-jackson.com



These particulars do not form part of an offer or contract and must not be relied upon as statements or representation of fact. Any areas, measurements, journey times or distances are approximate. The text, images, photographs and plans are for guidance only and are not necessarily comprehensive. It should not be assumed that the property has all necessary planning, building regulation or other consents and we have not tested any services, equipment or facilities. References to tenure are based on information supplied by the seller. Buyer should verify all information themselves by inspection or otherwise prior to a legal commitment to purchase. Photos and images are subject to copyright.