

High Street Maidstone ME14 1HT

Leasehold



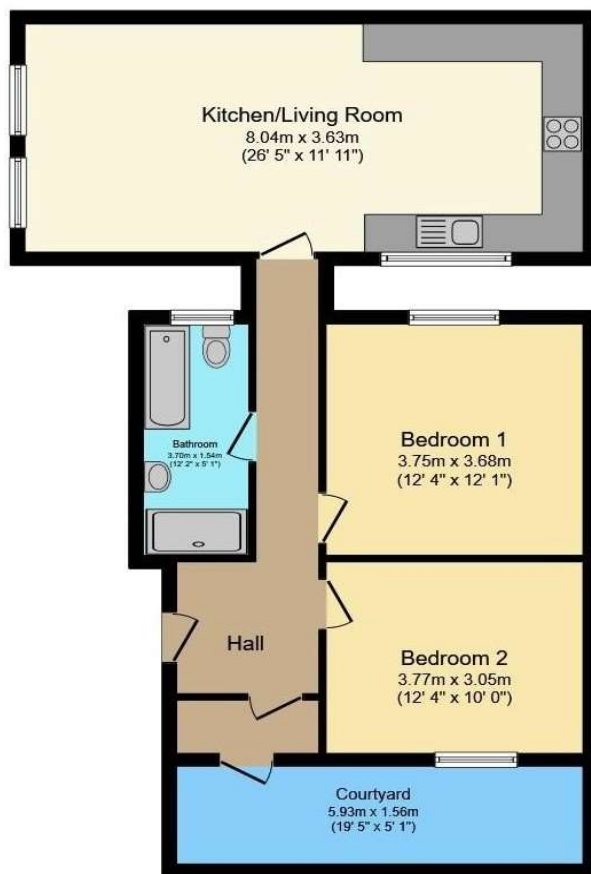
Council Tax: C
EPC Rating: D

A gem of an apartment conveniently located in the heart of Maidstone in the sought after High Street with a quaint historic Tudor frontage, all amenities on your doorstep.

- Two Double bedrooms
- Open planned Kitchen/living
- Cash Buyers only
- Courtyard
- Town centre location
- Chain free

Guide Price £150,000 - £160,000

ROBINSON MICHAEL & JACKSON
Our service will *move* you



**FOR MORE INFORMATION
CONTACT US TODAY.**

01622 476666
Robinson Michael & Jackson
15A King Street
Maidstone,
Kent ME14 1BA
maidstone@robinson-jackson.com



Interior

Hallway 0.7m x 1.37m (2'4" x 4'6") Leads into property

Kitchen/Living Room 8.05m x 3.63m (26'5" x 11'11") Window to front, open planned, integrated appliances

Bedroom 1 3.76m x 3.68m (12'4" x 12'1") Window, double bedroom

Bedroom 2 3.76m x 3.05m (12'4" x 10') Window facing courtyard, double bedroom

Bathroom 3.68m x 1.52m (12'1" x 5') Walk in shower, bath, basin & WC, window

Leasehold Information

Time remaining on lease: Approx. 106 years and 11 months

Ground Rent: £250 Per Annum

Service Charge: £76.67 Monthly