



Court Road | Orpington, Kent, BR6 0PY



Guide Price £650,000 - £675,000

Freehold

ROBINSON-JACKSON
Our service will *move* you

Court Road, Orpington

A four bedroom, two bathroom semi detached house that is conveniently located for Orpington Town Centre and Mainline Station. The property offers spacious and versatile family accommodation.

Property Features

- Set Back From The Road
- Deceptively Spacious
- Two Reception Rooms
- Ground Floor Shower Room
- Good Sized Bedrooms
- Approx 85ft Rear Garden
- Versatile Accommodation
- Council Tax: E
- EPC Rating: D



Interior

Entrance Porch: Double glazed doors to front.

Entrance Hall: Stairs to first floor. Wood flooring.

Bedroom 4: 3.48m x 3.28m (11'5" x 10'9") Double glazed window to front, radiator and wood flooring. Access to:-

Ground Floor Shower Room: With a walk in shower enclosure with 'Mira' shower, wall hung wash hand basin and wc. Chrome heated towel rail. Double glazed opaque window.

Lounge: 4.5m x 3.89m (14'9" x 12'9") Double glazed bay window to front, feature cast iron fireplace, radiator and wood laminate flooring.

Dining Room: 5.1m x 3.45m (16'9" x 11'4") Double glazed French doors opening onto the rear garden. Double glazed windows to side. Feature cast iron fireplace, radiator and wood laminate flooring.

Kitchen: 3.96m x 2.34m (13' x 7'8") Fitted with a modern range of wall and base units with work surfaces. Range style cooker and washing machine to remain. Space for dishwasher. Sink unit & drainer. Sink unit & drainer. Double glazed window to side and rear.

Landing: Double glazed opaque window to side, access to loft and wood laminate flooring.

Bedroom 1: 4.65m x 3.48m (15'3" x 11'5") Double glazed bay window to front, feature cast iron fireplace, radiator and wood laminate flooring.

Bedroom 2: 4.7m x 3.15m (15'5" x 10'4") (Maximum dimensions). Double glazed bay window to rear, built in wardrobes, radiator and wood laminate flooring.

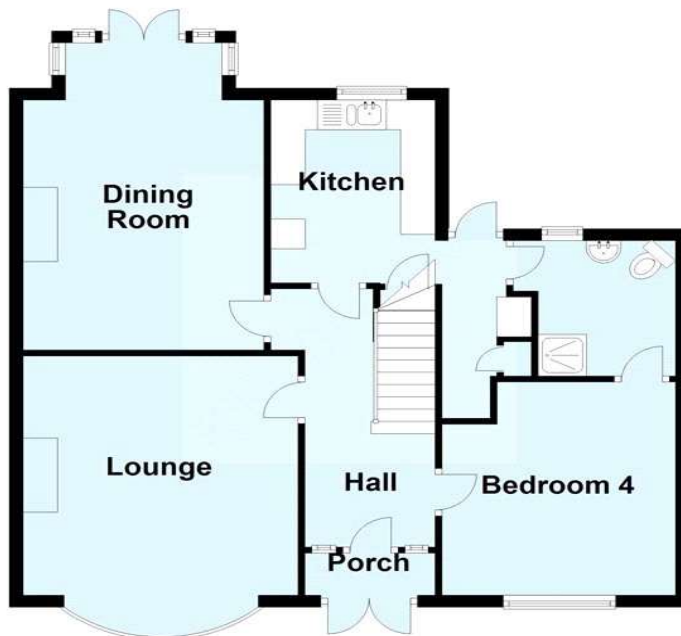
Bedroom 3: 2.92m x 2.24m (9'7" x 7'4") Double glazed bay window to front, radiator and wood laminate flooring.

Bathroom: Fitted with a panelled bath with shower over and pedestal wash hand basin. Chrome heated towel rail. Double glazed opaque window to side.

Separate WC: With wash hand basin. Double glazed window to side.

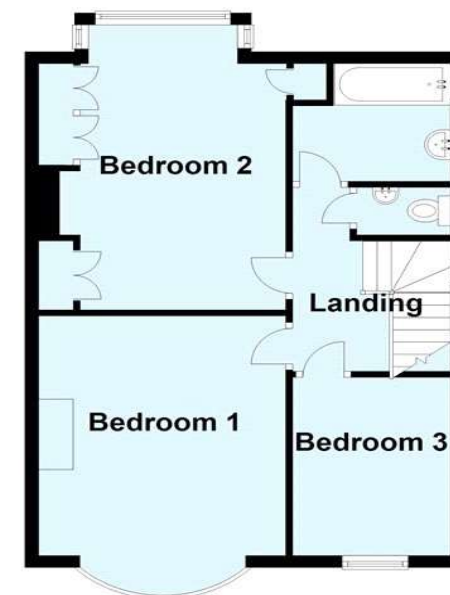
Ground Floor

Approx. 73.2 sq. metres (788.4 sq. feet)



First Floor

Approx. 51.3 sq. metres (551.9 sq. feet)



Total area: approx. 124.5 sq. metres (1340.4 sq. feet)

This plan is for general layout guidance and may not be to scale.
Plan produced using PlanUp.





Exterior

Rear Garden: Measuring approximately 85ft in length. Laid to lawn with a variety of shrubs and small trees. Attractive patio area. Fish pond.

Summerhouse: 19'1 x 9'4: With glazed windows and entrance door. Power and lighting.

Private Hot Tub: Seats 4.

Front Driveway: Providing off road parking for two/three cars.

Additional Information

The property is conveniently situated for a range of amenities including Orpington Town Centre. bus routes and several Schools.

Property Location

Court Road, Orpington, Kent, BR6 0PY



**FOR MORE INFORMATION
CONTACT US TODAY.**

01689 833322

Robinson Jackson
292 High Street,
Orpington,
Kent BR6 0NF

orpington@robinson-jackson.com

