



Southfleet Road | South Orpington, Kent, BR6 9SW



Guide Price £425,000 - £450,000

Freehold

ROBINSON-JACKSON
Our service will *move* you

Southfleet Road, South Orpington

An opportunity to purchase this three bedroom terraced house situated on a popular modern development. Although in need of some updating the property has much potential and is offered 'Chain Free'.

Property Features

- Central Heating
- Mostly Double Glazed
- Driveway & Garage
- Low Maintenance Rear Garden
- Close To Amentias
- Chain Free
- Council Tax: D
- EPC Rating: C



Interior

Entrance Hall: Wood door to front. Single glazed window to side. Stairs to first floor with understairs storage cupboard.

Ground Floor Cloakroom: With wash hand basin and wc. Single glazed window.

Lounge: 4.47m x 3.28m (14'8" x 10'9") Double glazed sliding patio door opening onto the rear garden. Feature fireplace, radiator and fitted carpet.

Kitchen: 4m x 2.3m (13'1" x 7'7") Fitted with a range of wall and base units with work surfaces. Space for fridge freezer. Sink unit & drainer. Double glazed window to front. Open aspect to:-

Dining Area: 3.1m x 2.6m (10'2" x 8'6") Double glazed window to rear, radiator and fitted carpet.

Landing: Double glazed window to front, airing cupboard, storage cupboard, access to loft and fitted carpet.

Bedroom 1: 3.68m x 3.28m (12'1" x 10'9") Double glazed window to rear, built in wardrobe, radiator and fitted carpet.

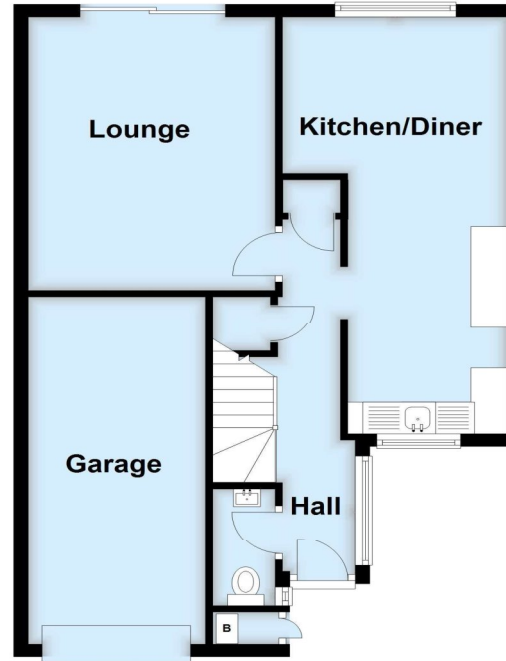
Bedroom 2: 3.2m x 3.1m (10'6" x 10'2") Double glazed window to front, radiator and fitted carpet.

Bedroom 3: 3.28m x 2.06m (10'9" x 6'9") Double glazed window to rear, built in wardrobe, radiator and fitted carpet.

Bathroom: Fitted with a three piece suite comprising a panelled bath, pedestal wash hand basin and wc. Double glazed opaque window to front.

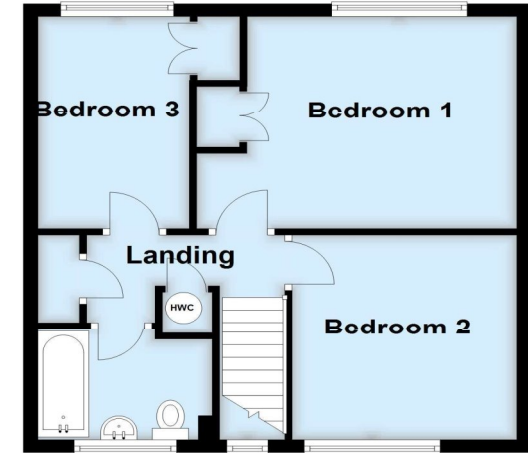
Ground Floor

Approx. 58.1 sq. metres (625.5 sq. feet)



First Floor

Approx. 44.8 sq. metres (482.4 sq. feet)



Total area: approx. 102.9 sq. metres (1107.9 sq. feet)

This plan is for general layout guidance and may not be to scale.
Plan produced using PlanUp.





Exterior

Rear Garden: Paved and offering low maintenance.

Front Driveway: Leading to:-

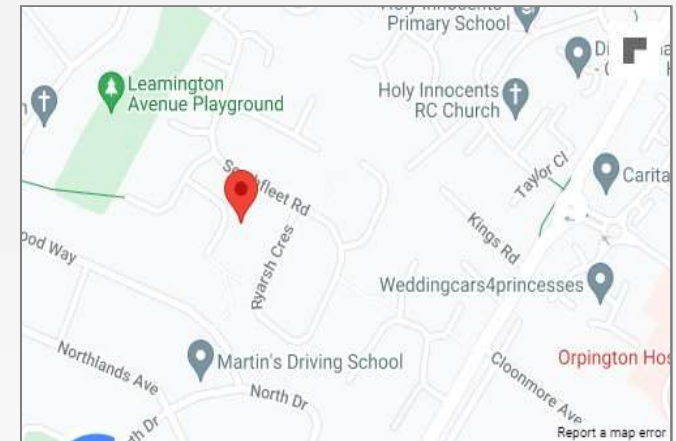
Garage: With up and over door.

Additional Information

Southfleet Road is situated in a popular development in South Orpington and is convenient for Orpington Station and several popular Schools including Darrick Wood & Newstead Woods.

Property Location

Southfleet Road, South Orpington, Kent, BR6 9SW



FOR MORE INFORMATION CONTACT US TODAY.

01689 833322
Robinson Jackson
292 High Street,
Orpington,
Kent BR6 0NF
orpington@robinson-jackson.com