



Havelock Road | West Dartford, Dartford, DA1 3HZ



Guide Price £400,000 to £425,000

Freehold

ROBINSON-JACKSON
Our service will *move* you

Havelock Road, West Dartford

Robinson Jackson are delighted to offer for sale this chain free detached bungalow located in a popular West Dartford road. The property is in need of modernisation and benefits from a large garden.

Property Features

- Council Tax: D
- EPC Rating: E
- 90ft Garden Backing Onto Allotments
- Versatile Living Accommodation
- No Forward Chain
- West Dartford Location
- In Need Of Updating
- Potential For Extension Subject To Planning Permission



Interior

Entrance Hall: Double glazed entrance door. Coved ceiling. Ceiling rose. Dado rail. Radiator. Carpet. Thermostat.

Bedroom One: Leaded double glazed bay window to front. Coved ceiling. Radiator. Carpet. Range of built in bedroom furniture. En-suite bathroom.

En-suite Bathroom: Leaded frosted double glazed window to side. Coved ceiling. Spotlights. Wall mounted electric heater. Tiled walls. Heated towel rail. Panel bath with mixer tap. Pedestal wash hand basin. Low level WC. Bidet. Tiled shower cubicle. Tiled floor. Cupboard housing boiler.

Living Room: Leaded double glazed bay window to front. Leaded double glazed patio doors to conservatory / lean to. Coved ceiling. Dado rail. Two radiators. Feature fireplace. Carpet.

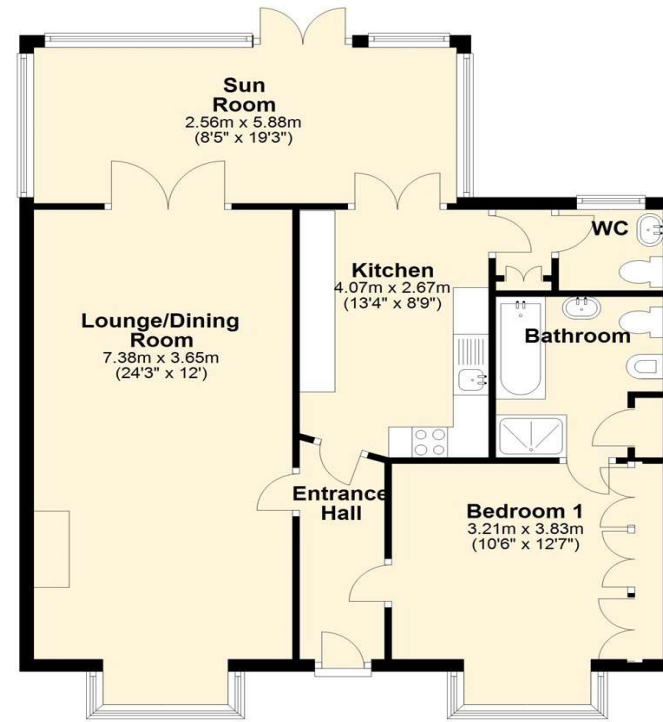
Kitchen: Leaded double glazed patio doors to lean to / conservatory. Coved ceiling. Matching range of wall and base units. Complimentary work surfaces. Tiled splash backs. Space for fridge freezer. Space for cooker. Space for washing machine. Built in stoves oven and gas hob. Cooker hood. Tiled floor.

Lobby: Spotlights. Coved ceiling. Tiled walls. Tiled floor. Storage cupboard. Door to WC.

Separate WC: Leaded double glazed window to rear. Coved ceiling. Tiled walls. Low level WC. Pedestal wash hand basin. Radiator. Tiled floor.

Lean To: Double doors to garden. Door to side. Double glazed windows to rear. Carpet.

Ground Floor
Approx. 83.2 sq. metres (895.4 sq. feet)



Total area: approx. 83.2 sq. metres (895.4 sq. feet)

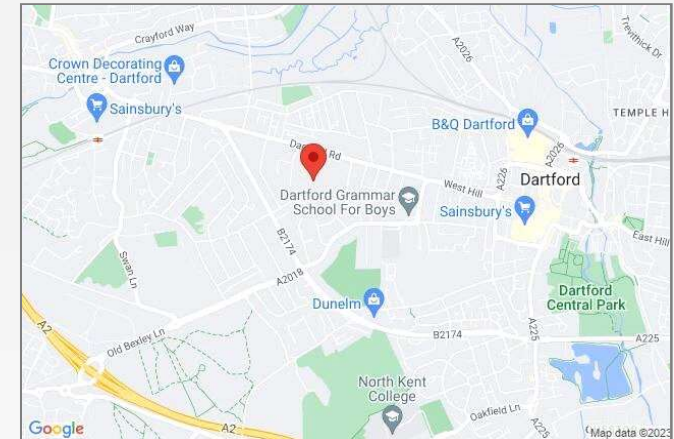
This Floorplan is for illustrative purposes only
Plan produced using PlanUp.





Property Location

Havelock Road, West Dartford, Dartford, DA1 3HZ



Additional Information

East facing garden.

The boiler is located in the bathroom.

The property measures 67 square metres.

Council Tax - Dartford band D.

The property has no forward chain.

Please note you will notice a damp patch in the lounge on the wall and damp report will be available for inspection on viewing the property.

Exterior

Rear Garden: Approx 90ft. East facing. Decked area. Lawn. Plum Apple and Pear trees. Decked seating area with pergola. Shed. Rear paved seating area. Shrub borders. Side pedestrian access to a concrete garage. Outside tap. Double gates to front garden.

Garage / Concrete Shed: Double doors to front. Door to garden. Windows to rear. Power and light.

Front Garden: Double gates. Walled. Block paved with shrubs and flower beds.

**FOR MORE INFORMATION
CONTACT US TODAY.**

01322 281281

Robinson Jackson
22 Market Street,
Dartford,
Kent DA1 1EZ

dartford@robinson-jackson.com



These particulars do not form part of an offer or contract and must not be relied upon as statements or representation of fact. Any areas, measurements, journey times or distances are approximate. The text, images, photographs and plans are for guidance only and are not necessarily comprehensive. It should not be assumed that the property has all necessary planning, building regulation or other consents and we have not tested any services, equipment or facilities. References to tenure are based on information supplied by the seller. Buyer should verify all information themselves by inspection or otherwise prior to a legal commitment to purchase. Photos and images are subject to copyright.