



Newington Walk | Maidstone, Kent, ME14 5RJ



Guide Price £280,000 - £290,000

Freehold

ROBINSON MICHAEL & JACKSON

Our service will *move* you

Newington Walk, Maidstone

Guide Price £280,000 - £290,000

Calling all house hunters! This charming 2-bedroom terraced home in the desirable Vinters Park neighbourhood north of Maidstone town centre is a must-see.

Property Features

- Council Tax: C
- EPC Rating: To be confirmed
- Two double bedroom terrace house
- Refurbished to a high standard
- Garage en-bloc
- Landscaped private rear garden
- Popular location



Interior

Entrance Hall Stairs leading up, leads into the lounge

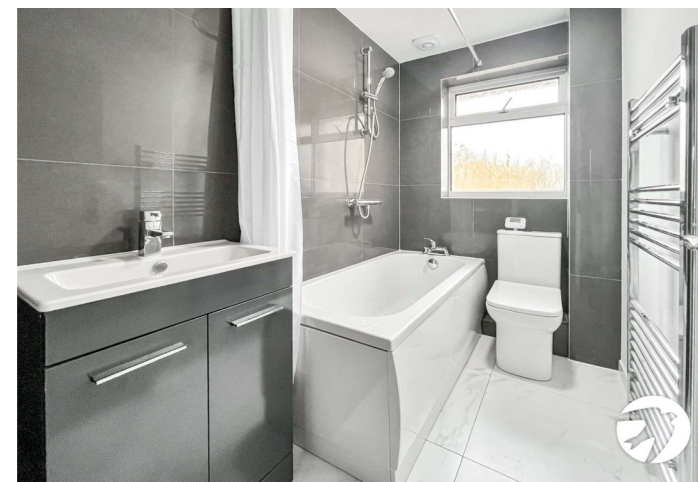
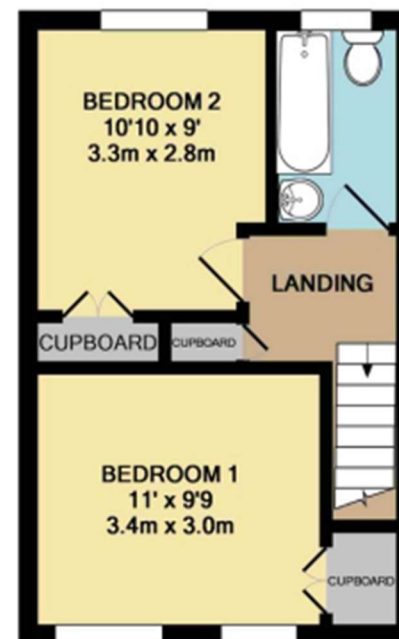
Lounge 4.62m x 4.27m (15'2" x 14') Window to the front, storage cupboard under the stairs, leads through to kitchen

Kitchen/Diner 4.27m x 2.2m (14' x 7'3") Double doors leading into the garden, integrated appliances including hob & oven, space for washing machine

Bedroom 1 3.35m x 2.97m (11' x 9'9") Windows to the front, double bedroom, cupboard

Bedroom 2 3.3m x 2.74m (10'10" x 9') Window to the rear, cupboard

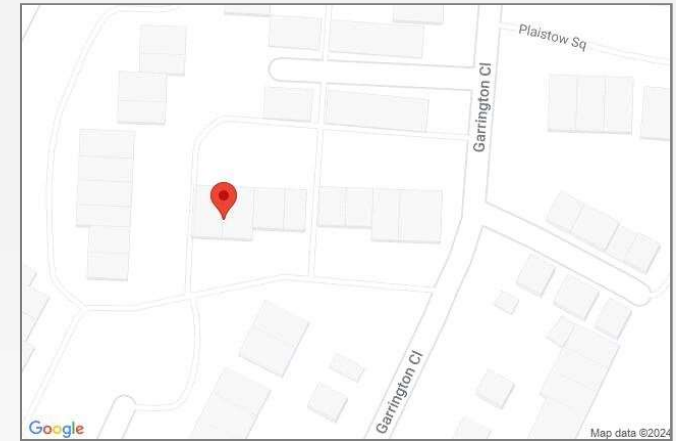
Bathroom Shower over bath, basin & WC, window to the rear





Property Location

Newington Walk, Maidstone, Kent, ME14 5RJ



   Scan for the latest properties...  Follow us on **facebook** for early access to new properties for sale. 

Key Facts For Buyers



**FOR MORE INFORMATION
CONTACT US TODAY.**

01622 476666
Robinson Michael & Jackson
15A King Street
Maidstone,
Kent ME14 1BA
maidstone@robinson-jackson.com

