



Augustine Road | St Pauls Cray, Kent, BR5 3JZ



Offers over £300,000 Freehold

ROBINSON-JACKSON
Our service will *move* you

Augustine Road

St Pauls Cray

Although in need of updating this two bedroom semi-detached bungalow offers much potential & is situated conveniently for Nugent Park Shopping Centre & St Mary Cray Station.

Property Features

- Double Glazing
- Central Heating
- Conservatory/Lean to
- Driveway Parking
- Much Potential
- 'Chain Free'
- Council Tax: C
- EPC Rating: E



Interior

Entrance Hall: Door to side, access to loft and radiator.

Lounge: 4.52m x 3.48m (14'10" x 11'5") Fireplace, carpet, double glazed sliding doors leading to conservatory/lean to.

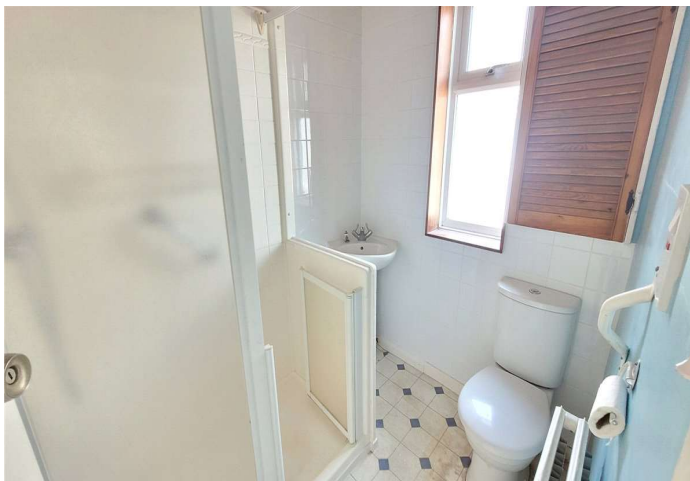
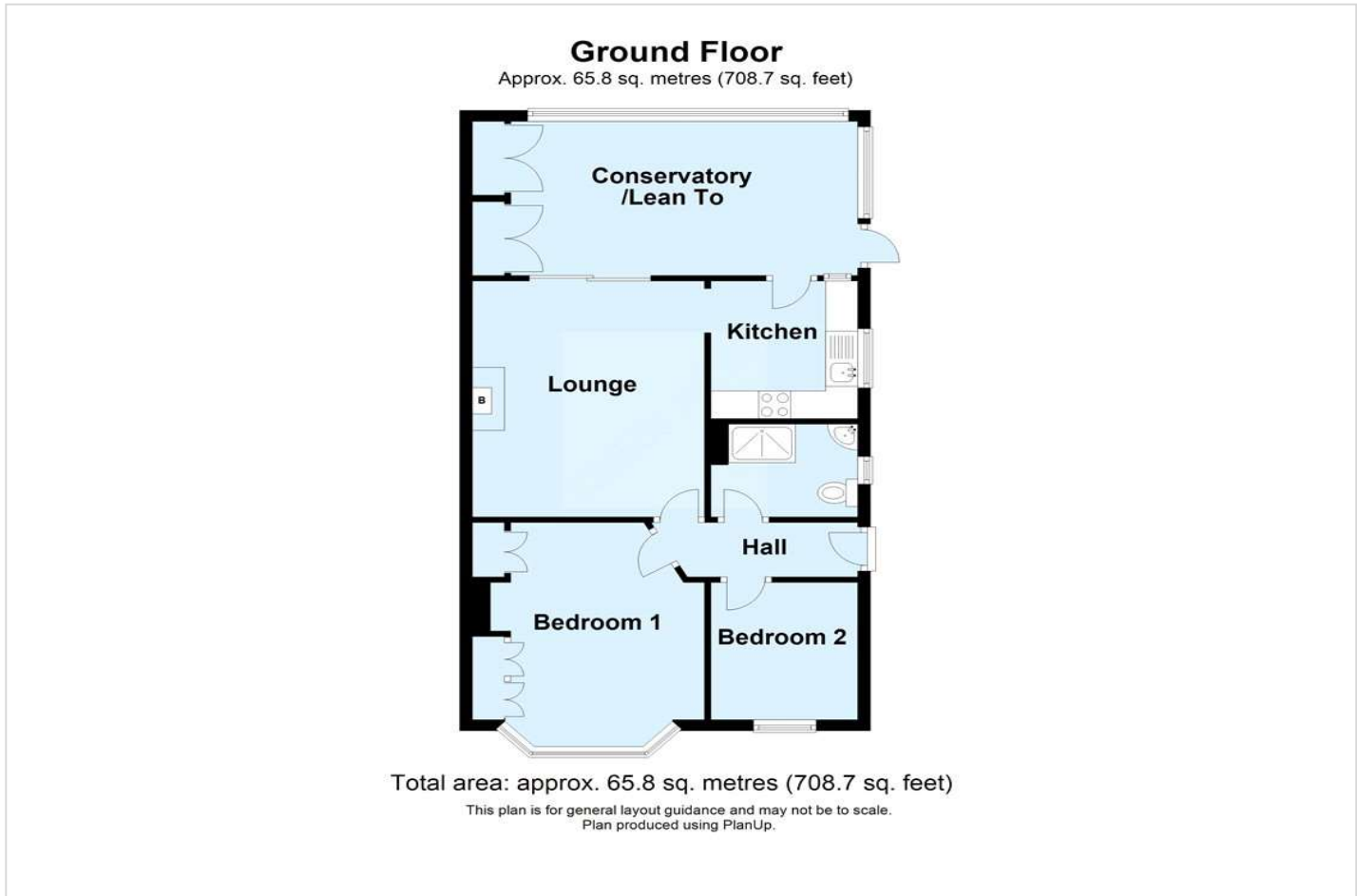
Kitchen: 2.41m x 2.3m (7'11" x 7'7") Fitted with a basic range of units with work surfaces, stainless steel sink unit with drainer. Double glazed window to side, bi-folding door opening into:-

Conservatory/Lean To: 5.36m x 2.8m (17'7" x 9'2") With double glazed windows and double glazed door to side providing further access into rear garden. Two built in cupboards.

Bedroom 1: 4.22m x 3.18m (13'10" x 10'5") Double glazed bay window to front, radiator and carpet. Fitted wardrobes.

Bedroom 2: 2.46m x 2.41m (8'1" x 7'11") Double glazed window to front, radiator and carpet.

Shower Room: With walk in shower, wash hand basin and wc with push button cistern. Radiator. Double glazed window to side.





Exterior

Front Garden: Mainly laid to lawn.

Rear Garden: Mainly laid to lawn with well stocked borders.

Driveway: Providing off road parking.

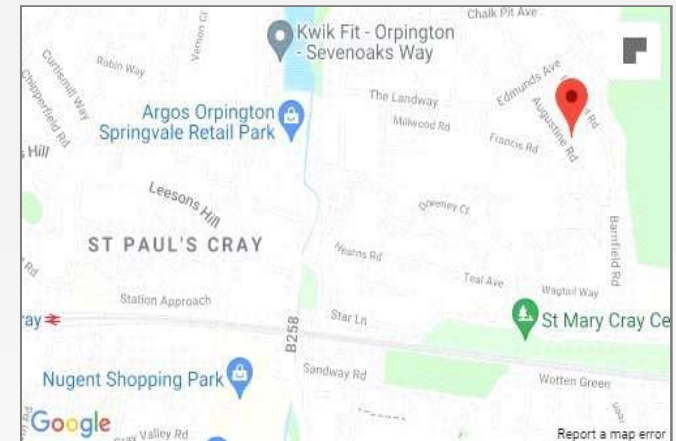
Additional Information

Augustine Road is conveniently situated for a range of local amenities including Nugent Park Shopping Centre, St Mary Cray Station, local bus routes and several Schools.

The property is in need of complete modernisation throughout although offers much potential and is being offered 'Chain Free'

Property Location

Augustine Road, St Pauls Cray, Kent, BR5 3JZ



**FOR MORE INFORMATION
CONTACT US TODAY.**

01689 833322

Robinson Jackson
292 High Street,
Orpington,
Kent BR6 0NF

orpington@robinson-jackson.com

