



Elgin Gardens | Rochester, Kent, ME2 2PU



Guide Price £250,000 to £270,000

Freehold

ROBINSON MICHAEL & JACKSON

Our service will *move* you

Elgin Gardens, Rochester

This two bedroom home is being offered to the market with no onward chain. Situated close to local amenities, schools and motorway links.

Property Features

- Council Tax: B
- EPC Rating: D
- No chain
- Two bedrooms
- Close to local amenities
- Newly fitted bathroom
- Close to A2/M2 motorway links



Interior

Entrance Hall

Lounge 4.5m x 3.2m (14'9" x 10'6") Laminate flooring, double glazed bay window to front, radiator.

Dining Room 3.3m x 2m (10'10" x 6'7") Laminate flooring, radiator, patio to rear.

Kitchen Tiled flooring, sink drainer with mixer tap, electric hob with extractor fan, oven, space for appliances, double glazed window & door to rear, fully tiled walls.

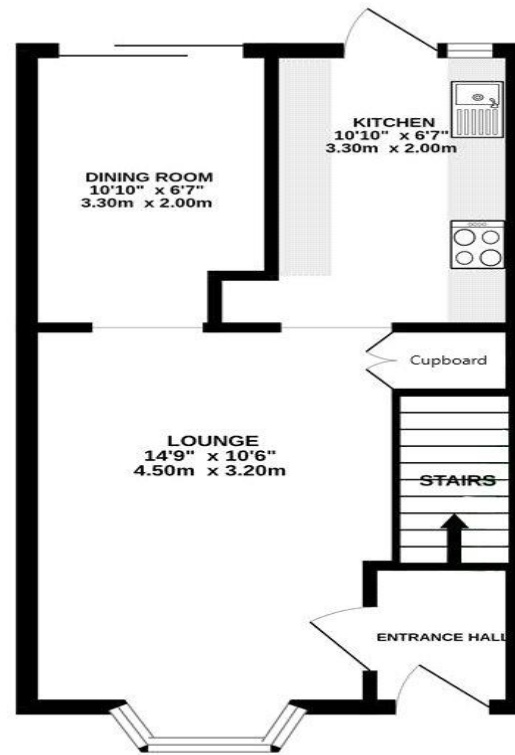
Landing

Bedroom One 3.86m x 3.25m (12'8" x 10'8") Carpet, double glazed window to front, radiator, storage cupboard.

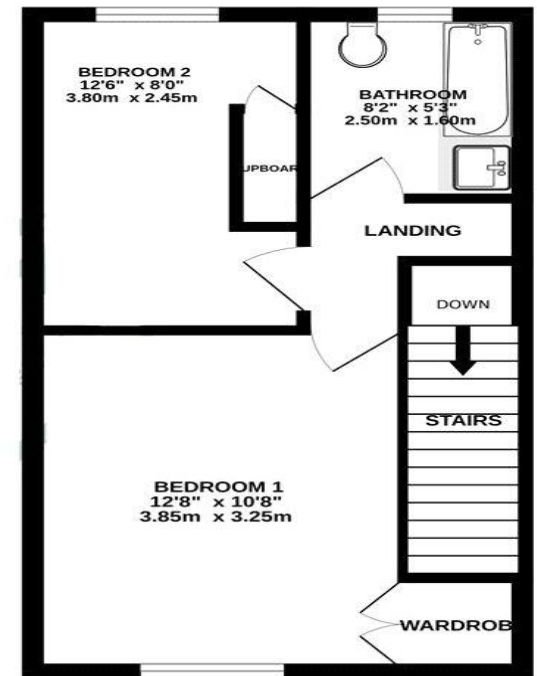
Bedroom Two 3.8m x 2.44m (12'6" x 8') Carpet, radiator, double glazed window to rear, storage cupboard.

Bathroom 2.5m x 1.6m (8'2" x 5'3") Tiled flooring, panelled bath, sink with mixer tap, low level w.c, double glazed window to rear.

GROUND FLOOR
343 sq.ft. (31.8 sq.m.) approx.



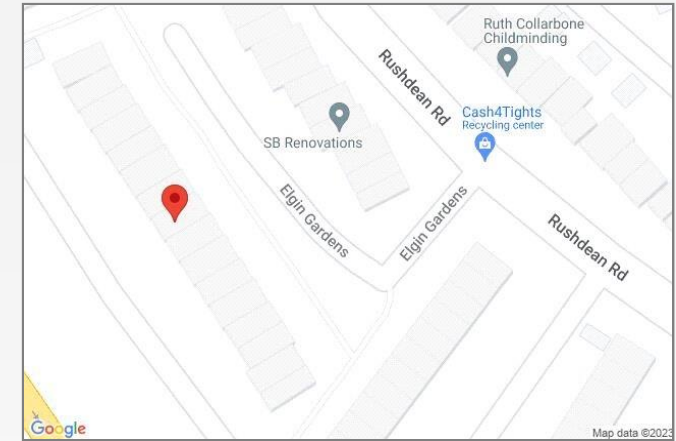
1ST FLOOR
337 sq.ft. (31.3 sq.m.) approx.





Property Location

Elgin Gardens, Rochester, Kent, ME2 2PU



Additional Information

Strood is a town in the unitary authority of Medway in Kent, South East England. It lies on the northwest bank of the River Medway at its lowest bridging point.

Strood has a main high street which includes many large retailers including B&M, Marks and Spencer's Foodhall & Matalan. The high street is only a short drive away from the main A2/M2 motorway links.

FOR MORE INFORMATION
CONTACT US TODAY.

01634 722777

Robinson Michael & Jackson
109 High Street
Strood,
Kent ME2 4TJ
strood@robinson-jackson.com

