



Olron Crescent | Bexleyheath, DA6 8JY



£425,000 to  
£435,000

## Olron Crescent, Bexleyheath

Situated within the ever popular southside of Bexleyheath is this extended two bedroom semidetached home. Benefits include no forward chain, off street parking and close to Grammar Schools.

### Property Features

- Council Tax: D
- Two Bedrooms
- Semi Detached
- South Bexleyheath
- Off Street Parking
- Chain Free
- Extended
- Garage



## Interior

Porch

Entrance Hall

Living Room 5.6m x 4.17m (18'4" x 13'8")

Kitchen/Diner 4.11m x 3.07m (13'6" x 10'1")

Landing

Bedroom 1 6.2m x 2.29m (20'4" x 7'6")

Bedroom 2 4.2m x 2.9m (13'9" x 9'6")

Bathroom 3m x 1.96m (9'10" x 6'5")

WC 1.78m x 0.91m (5'10" x 3')

Side Storage

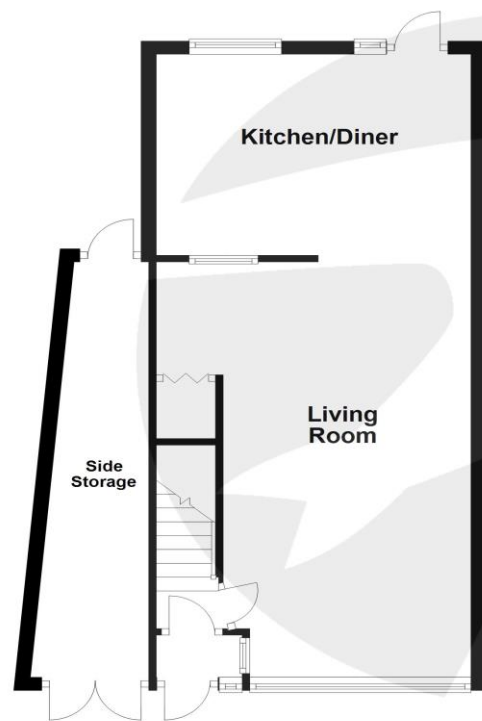
## Exterior

Off street parking

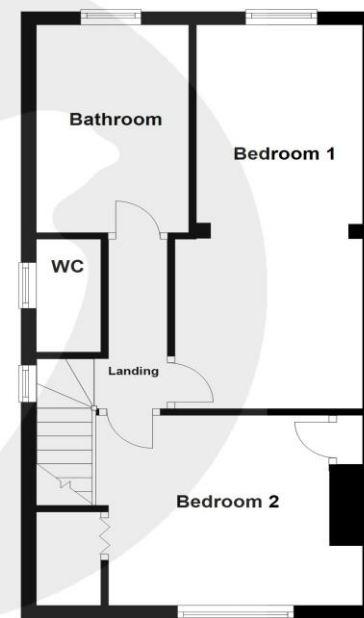
Garden 80ft approx.

Side Storage

### Ground Floor



### First Floor



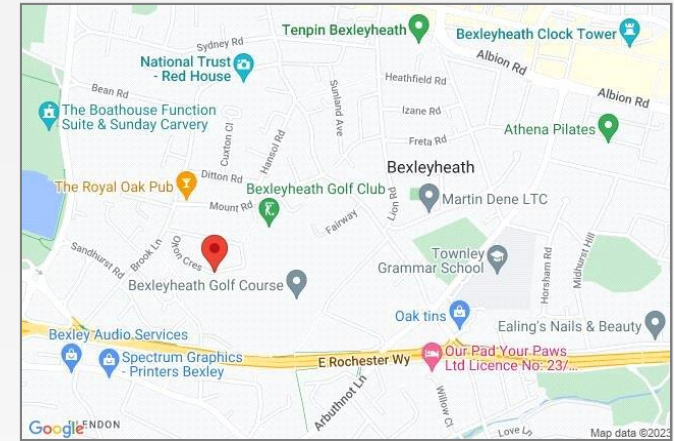
Please note that this is for illustration purposes only and should not be used as an exact representation of the property. All measurements are approximate.  
Plan produced using PlanUp.





## Property Location

Olron Crescent, Bexleyheath, DA6 8JY



## Additional Information

Bexleyheath is home to the borough's largest shopping facility, where you'll find high-street names, supermarkets and specialty shops. Close by there's Crook Log Leisure Centre, a Cineworld cinema, and the beautiful Danson Park is less than half a mile away.

Families are also attracted to Bexleyheath for the schooling – with two of the borough's grammars and excellent primaries close by. The Red House – an Arts & Crafts property designed for the artist and socialist

William Morris by renowned Architect Philip Webb - is Bexleyheath's premier cultural attraction.

FOR MORE INFORMATION  
CONTACT US TODAY.

020 8298 7000

Robinson Jackson  
124 Broadway,  
Bexleyheath,  
Kent DA6 7DQ

bexleyheath@robinson-jackson.com



These particulars do not form part of an offer or contract and must not be relied upon as statements or representation of fact. Any areas, measurements, journey times or distances are approximate. The text, images, photographs and plans are for guidance only and are not necessarily comprehensive. It should not be assumed that the property has all necessary planning, building regulation or other consents and we have not tested any services, equipment or facilities. References to tenure are based on information supplied by the seller. Buyer should verify all information themselves by inspection or otherwise prior to a legal commitment to purchase. Photos and images are subject to copyright.