



Chave Road | Wilmington, Dartford, DA2 7ED



Asking Price £550,000

Freehold

**ROBINSON-JACKSON**  
Our service will *move* you

## Chave Road, Wilmington

A stunning bungalow benefitting from a large rear garden with a swimming pool, Robinson Jackson highly recommend internal viewing of this versatile property located in the village of Wilmington.

### Property Features

- Council Tax: D
- EPC Rating: D
- Heated Swimming Pool
- Loft Conversion with Further Potential To Extend (STPP)
- Approx. 100' Rear Garden
- 14' Master Bedroom
- Converted Garage Giving An Additional Room With En Suite WC (Annex)



## Interior

**Entrance Hall:** Entrance door to side. Storage cupboard. Radiator. Wood effect flooring.

**Lounge:** 8.81m x 3.43m (28'11" x 11'3") Double glazed window to front. Double glazed French doors to rear. Coved ceiling. Under stairs storage cupboard. Radiator. Wood effect flooring.

**Conservatory:** 4.37m x 2.87m (14'4" x 9'5") Double glazed windows to side and rear. Double glazed French doors to side. Radiator. Wood effect flooring.

**Kitchen:** 3.33m x 2.29m (10'11" x 7'6") Double glazed window to rear. Coved ceiling. Range of wall and base units with complementary work surfaces over and incorporating one and half bowl sink unit. Plumbed for washing machine. Integrated dishwasher, fridge/freezer, double oven and hob with extractor over. Tiled flooring. Radiator.

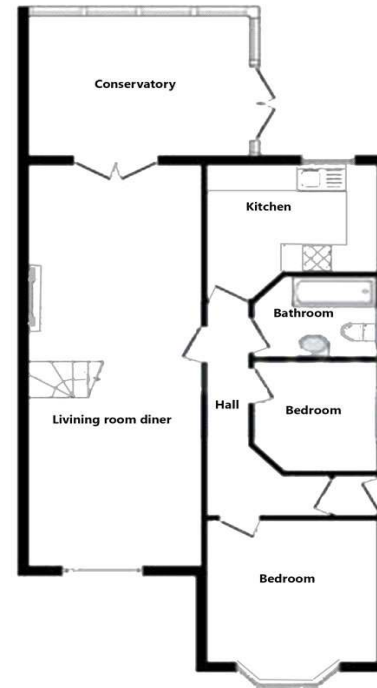
**Bathroom:** 2.2m x 1.78m (7'3" x 5'10") Frosted double glazed window to side. Coved ceiling. Part tiled walls. Panelled bath. Separate hand held shower. Rainfall shower. Low level WC. Vanity wash hand basin. Heated towel rail. Tiled flooring.

**Bedroom Two:** 3.63m x 3.23m (11'11" x 10'7") Double glazed bay window to front. Radiator. Carpet.

**Bedroom Three:** 2.44m x 2.4m (8' x 7'10") Double glazed window to side. Coved ceiling. Radiator. Carpet.

**Landing:** Carpet. Door to eaves storage space. The boiler is in the eaves cupboard.

**Bedroom One:** 4.37 (14'4")m red. to 1.96 (6'5")m x 4.32 (14'2")m red. to 2.6 (8'6")m Double glazed window to rear. Over stairs storage cupboard. Radiator. Carpet.



**Ground Floor**  
Floor area 85.0 sq m (915 sq ft) approx



**First Floor**  
Floor area 30.0 sq ft (323 sq ft) approx

Total floor area 115.0 sq m (1,238 sq ft) approx  
This plan is for illustration purposes only and may not be representative of the property.





## Property Location

Chave Road, Wilmington, Dartford, DA2 7ED



## Exterior

Office/Annex With En-suite WC: Double glazed patio door to garden. spotlights. Wood effect flooring. Door to WC with spotlights. Vanity wash hand basin. Tiled splashback. low level WC. Wood effect flooring.

Rear Garden: Approx. 100'. Lawn. Composite decking area with integral heated swimming pool. Brick build shed with power and lighting. Side pedestrian access. Raised patio area. Established shrubs.

Front: Brick laid driveway providing off road parking for up to three cars

## Additional Information

Council Tax - Dartford Band D

Total Floor Area: 88 sq. metres

The boiler is located in the cupboard on the landing.

The garden faces North East

The owners are looking for another property so are involved in a chain.

**FOR MORE INFORMATION  
CONTACT US TODAY.**

01322 281281

Robinson Jackson  
22 Market Street,  
Dartford,  
Kent DA1 1EZ

dartford@robinson-jackson.com

