



Valley Gardens | Mounts Road, Greenhithe, DA9 9JP

 3  2  1    Asking Price: £425,000    Freehold

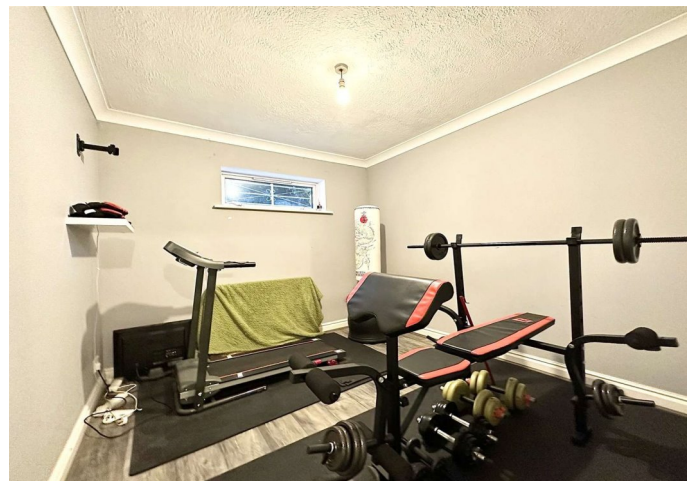
**ROBINSON-JACKSON**  
Our service will *move* you

# Valley Gardens, Mounts Road

Robinson Jackson are delighted to present this 3-bedroom end of terrace townhouse situated close to Bluewater Shopping Centre in Greenhithe. Offering a versatile living space, this home offers the perfect blend of comfort and functionality. Step inside to discover a well-appointed interior featuring a spacious lounge/diner, a modern kitchen, and three bedrooms, with an additional room off the master bedroom ideal for a dressing room or nursery. From the living room step through sliding doors onto the balcony which leads to the expansive garden, perfect for alfresco dining and outdoor entertaining. The property also benefits from the added convenience of an integral garage and off-street parking. Situated in a prime location, residents enjoy easy access to an array of local amenities including Bluewater, and excellent local schools, while transport links such as the nearby Greenhithe station and the A2/M25 motorway networks provide seamless connections to London and beyond. Don't miss this opportunity to make this wonderful property your new home.

## Property Features

- End of Terrace Town House
- Three Bedrooms
- Dressing Room/Nursery off Master Bedroom
- EPC Rating C
- Garage & Off Street Parking
- Close Proximity to Bluewater
- Walking Distance to Greenhithe Station



## Interior

**Entrance:** Cupboard housing utilities meters.

**Entrance Hall:** Laminate flooring. Stairs to first floor.

**Shower Room:** Frosted double glazed window to side. Low level WC. Wash hand basin. Shower cubicle. Heated towel rail. Part tiled walls. Vinyl flooring. Extractor fan.

**Bedroom Three:** 3m x 2.7m (9'10" x 8'10") Double glazed window to rear. Built in wardrobes. Radiator. Carpet.

**First Floor Landing:** Double glazed window to front. Storage cupboard. Radiator. Carpet.

**Kitchen:** 2.54m x 2.5m (8'4" x 8'2") Double glazed window to front. Range of matching wall and base units with complimentary work surface over. Stainless steel sink. Integrated electric oven, gas hob and extractor. Space for fridge freezer. Space and plumbing for washing machine. Boiler. Radiator. Vinyl flooring.

**Lounge:** 5.38m x 4.72m (17'8" x 15'6") Double glazed window to side and rear. Double glazed sliding door to rear. Two radiators. Laminate flooring.

**Second Floor Landing:** Double glazed window to front. Airing cupboard. Radiator. Carpet.

**Bedroom One:** 3.6m x 2.57m (11'10" x 8'5") Double glazed window to rear. Radiator. Carpet. Access to loft. Access to Nursery/Dressing Room/Study.

**Nursery/Dressing Room:** 2.57m x 2.08m (8'5" x 6'10") Double glazed window to front. Radiator. Carpet.

**Bedroom Two:** 2.7m x 2.57m (8'10" x 8'5") Double glazed window to rear. Radiator. Laminate flooring.

**Bathroom:** Frosted double glazed window to side. Low level WC. Pedestal wash hand basin. Panelled bath with shower over. Heated towel rail. Part tiled walls. Vinyl flooring. Extractor fan.

## Mounts Road, DA9

Approximate Area = 942 sq ft / 87.5 sq m (excludes store)

Garage = 150 sq ft / 13.9 sq m

Total = 1092 sq ft / 101.4 sq m

For identification only - Not to scale





## Exterior

Rear Garden: Approximately 51ft. Mainly laid to lawn. Patio area.

Side access.

Garage: 18'5 x 8'4 Power and outside tap.

Off street parking.

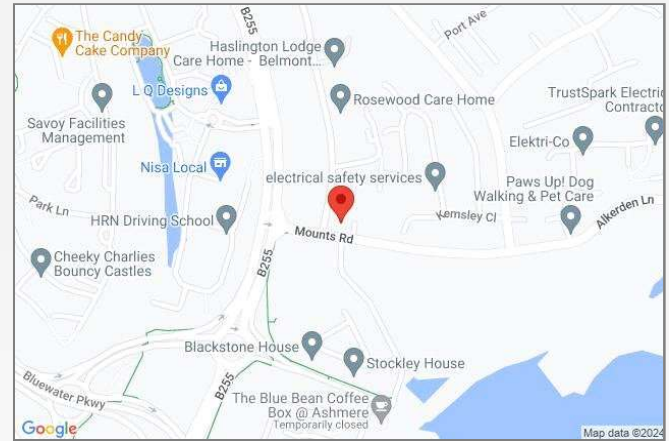
## Additional Information

Dartford Borough Council - Tax Band D

Total floor area: 89 sq. metres

## Property Location

Valley Gardens, Mounts Road, Greenhithe, DA9 9JP



FOR MORE INFORMATION  
CONTACT US TODAY.

01322 624440

Robinson Jackson  
39 High Street,  
Swanscombe  
Kent,  
DA10 0AG

swanscombe@robinson-jackson.com

