



Union Street
Maidstone
ME14 1JR
Leasehold



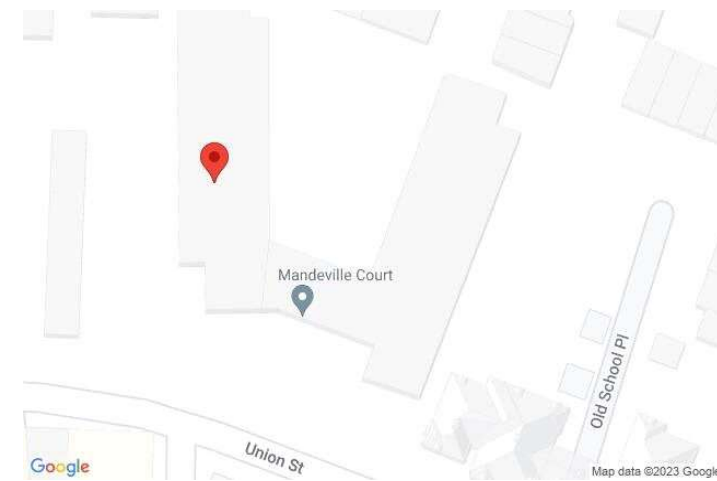
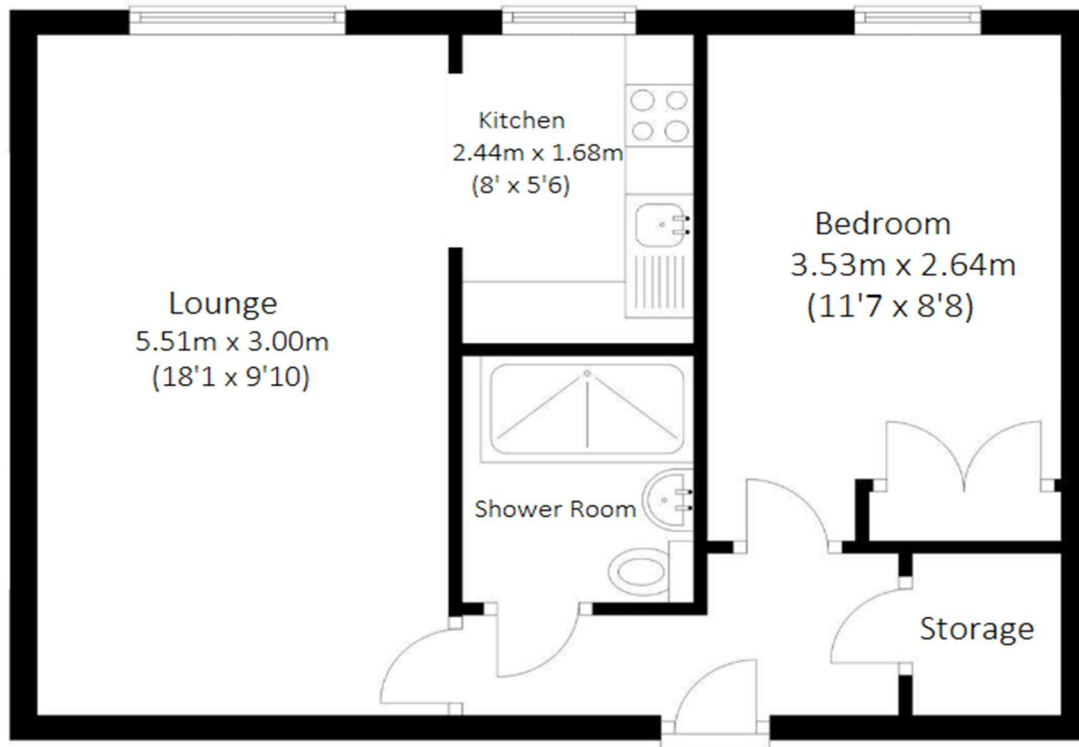
Council Tax: B
EPC Rating: C

Mandeville Court appears to be a well-equipped and thoughtfully designed retirement living development that offers a range of amenities.

- Must be over age of 60
- Ground floor
- Long Lease
- Lift access
- 24-hour emergency call response system
- Communal gardens
- Good condition
- Resident parking

Asking Price £100,000

ROBINSON MICHAEL & JACKSON
Our service will *move* you



**FOR MORE INFORMATION
CONTACT US TODAY.**

01622 476666
 Robinson Michael & Jackson
 15A King Street
 Maidstone,
 Kent ME14 1BA
 maidstone@robinson-jackson.com

Interior

Entrance Hall Telephone entry. Access to large storage cupboard

Lounge 5.5m x 3m (18'1" x 9'10") Storage heater. Double glazed window.

Kitchen 2.44m x 1.68m (8' x 5'6") Range of wall and base units with work surface over. Inset sink unit. Space for cooker. Space for fridge/freezer. Double glazed window.

Bedroom 3.53m x 2.64m (11'7" x 8'8") Built in double wardrobe cupboard. Double glazed window. Storage heater.

Shower Room Shower cubicle. WC. Wash hand basin. Wall mounted infra-red bathroom heater providing instant heat.

Leasehold Information

Time remaining on lease: Approx. 151 years and 1 month.

Ground Rent: To Be Confirmed

Service Charge: £230 monthly