



Dartford Road | West Dartford, Kent, DA1 3ER



Guide Price £300,000 to £325,000

Freehold

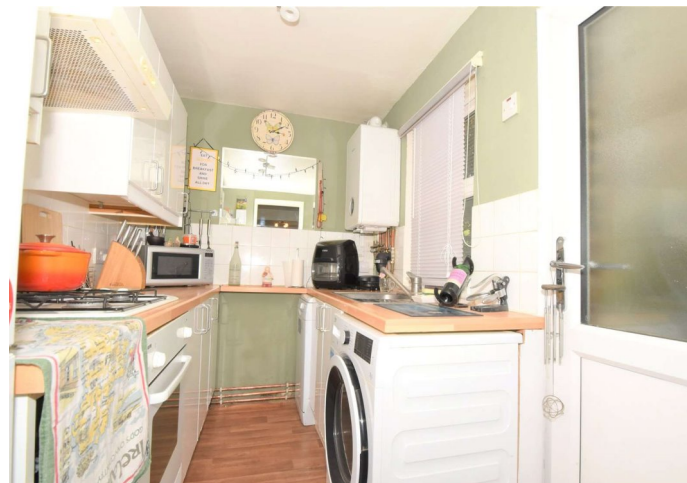
ROBINSON-JACKSON
Our service will *move* you

Dartford Road, West Dartford

Robinson Jackson are pleased to offer this delightful two bedroom terrace house. The property is well located for public transport and has various shops within a short distance.

Property Features

- Council Tax: C
- EPC Rating: D
- Separate First Floor Bathroom
- Modern Bathroom
- Ideally Located For Local Shops
- 0.9 Miles To Crayford Station
- Popular West Dartford Location
- Viewing Comes Highly Recommended



Interior

Lounge Diner: Double glazed window and door to front. Double glazed window to rear. Cast iron feature fireplace built in storage unit. Open fireplace. Radiator. Coved ceiling.

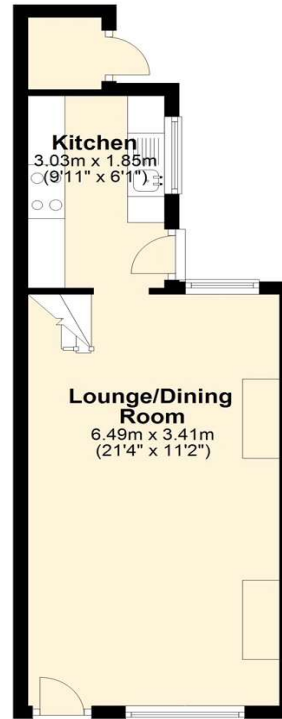
Kitchen: Double glazed window and door to side. A range of wall and base units with roll edge worktops. Stainless steel sink and drainer with mixer taps. Wall mounted combination boiler. Plumbed for washing machine and dishwasher. Gas hob and electric oven with extractor over. Space for fridge freezer. Vinyl flooring.

Bedroom One: Double glazed window to front. Built in storage cupboard. Radiator. Wood flooring.

Bedroom Two: Double glazed window to rear. Radiator. Fitted carpet.

Bathroom: Frosted double glazed window to rear. Modern Claw foot bath with mixer taps and shower over. Glass shower screen. Vanity mounted wash hand basin with mixer taps. Low level WC with enclosed cistern. Heated towel radiator. Tiled splash backs. Vinyl flooring.

Ground Floor
Approx. 29.2 sq. metres (313.8 sq. feet)



First Floor
Approx. 27.8 sq. metres (299.2 sq. feet)



Total area: approx. 57.0 sq. metres (613.0 sq. feet)

This Floorplan is for illustrative purposes only
Plan produced using PlanUp.





Exterior

Front Garden: low maintenance front garden. pathway leading to the street.

Rear Garden: Approximately 100ft. Two patio areas. Laid to lawn. Outside tap.

Additional Information

Combination boiler located in the kitchen fitted within the last 12 months

Front and rear gardens the latter being approximately 60ft long

Well located for public transport and various shopping facilities.

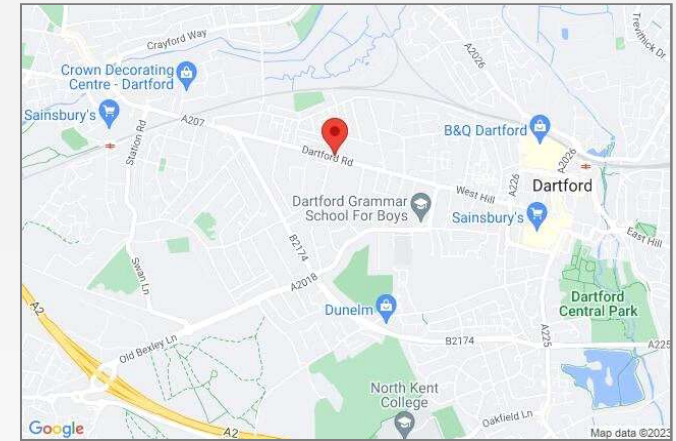
Ideal for a first time buyer.

The property Measures 55 Square Metres

Council Tax - Dartford Band C

Property Location

Dartford Road, West Dartford, Kent, DA1 3ER



*All distances from branch postcode. Train time from nearest station.

**FOR MORE INFORMATION
CONTACT US TODAY.**

01322 281281

Robinson Jackson
22 Market Street,
Dartford,
Kent DA1 1EZ

dartford@robinson-jackson.com

