



Flat 21 | Newbridge Point, Windrush Lane, SE23 2XA

2 1 1

£225,000 To £250,000

Leasehold

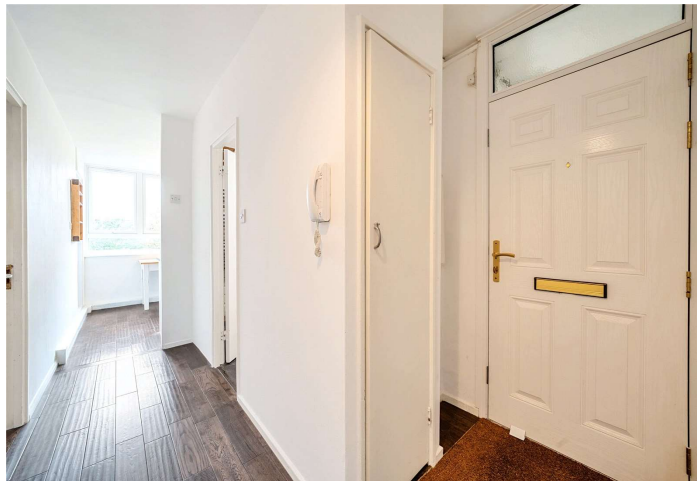
ROBINSON-JACKSON
Our service will *move* you

Flat 21, Newbridge Point

CASH BUYERS ONLYFantastic sixth floor purpose built flat offered chain free with two double bedrooms, long lease, residents parking, double glazing, solid oak flooring, ample storage and entry phone set within a highly desirable location, excellently located for Forest Hill Station, conveniently located for local independent shops, eateries and bars, the award winning Mayow Park and Horniman Museum & Gardens

Property Features

- Council Tax: B
- EPC Rating: C
- ***CASH BUYERS ONLY***
- Two Double Bedrooms
- Purpose Built Flat
- Chain Free
- Leasehold
- Long Lease
- Fifth Floor
- Residents Parking
- Double Glazing
- Laminate Flooring Where Stated
- Ample Storage
- Entry Phone
- Contemporary Designed
- Excellently located for Forest Hill Station



Interior

Communal Entrance

Entrance Hall Built in cupboard, solid oak flooring, radiator, entry phone

Lounge Double glazed window to side, double glazed door to balcony, solid oak flooring, radiator

Kitchen Double glazed window to side, double glazed door to balcony, range of wall and base units, wood work surface, sink with drainer, integrated oven, stainless steel hob and extractor, space for fridge/freezer, washing machine plumbed for, solid oak flooring

Master Bedroom Double glazed window to rear, built in wardrobe, solid oak flooring, radiator

Bedroom Two Double glazed window to rear, solid oak flooring, radiator

Bathroom Double glazed window to rear, tiled bath, built in shower, shower screen, wash hand basin, low flush WC, tiled flooring, hated towel rail

Exterior

Residents parking

Balcony

Additional Information

Double glazing

Central heating

Laminate flooring where stated

Ample storage

Entry phone

Fifth floor

Chain free

Long lease

Leasehold

Contemporary designed

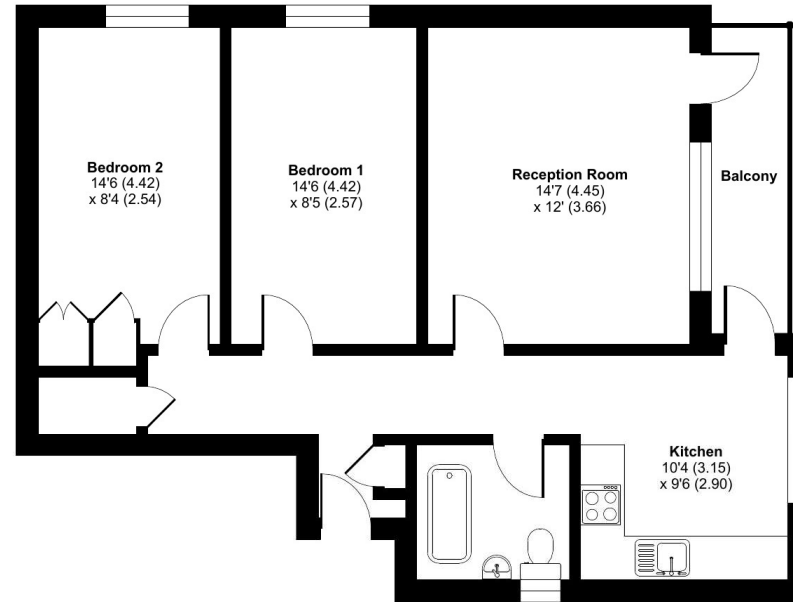
Excellently located for Forest Hill Station

Conveniently located for local independent shops, eateries and bars, the award winning Mayow Park and Horniman Museum & Gardens



Approximate Area = 703 sq ft / 65.3 sq m

For identification only - Not to scale



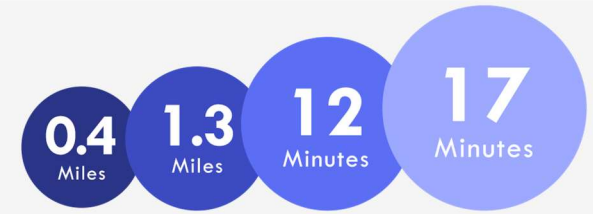
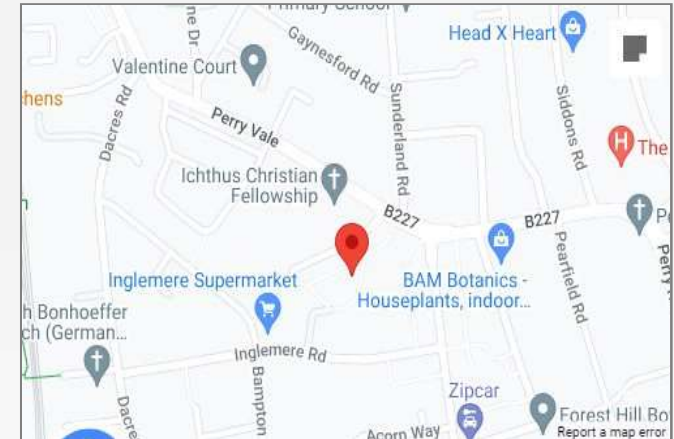
Floor plan produced in accordance with RICS Property Measurement Standards incorporating International Property Measurement Standards (IPMS2 Residential). © nichecom 2023.





Property Location

Flat 21, Newbridge Point, Windrush Lane, SE23 2XA



Horniman Museum & Gardens Lordship Lane Train to Canada Water Train to London Bridge

*All distances from SE23 3HB postcode. Train time from Forest Hill station.

Leasehold Information

Time remaining on lease: 91 Years

Ground Rent: £10 Per Annum

Service Charge: £1400 Per Annum

**FOR MORE INFORMATION
CONTACT US TODAY.**

020 8776 6660

Robinson Jackson

256 Kirkdale,

Sydenham,

London SE26 4NL

sydenham@robinson-jackson.com



These particulars do not form part of an offer or contract and must not be relied upon as statements or representation of fact. Any areas, measurements, journey times or distances are approximate. The text, images, photographs and plans are for guidance only and are not necessarily comprehensive. It should not be assumed that the property has all necessary planning, building regulation or other consents and we have not tested any services, equipment or facilities. References to tenure are based on information supplied by the seller. Buyer should verify all information themselves by inspection or otherwise prior to a legal commitment to purchase. Photos and images are subject to copyright.