



# Norfield Road

Joydens Wood | Kent | DA2 7NY



# Norfield Road

Joydens Wood, Kent, DA2 7NY

Asking Price £585,000

Freehold

This well-presented 3 bedroom detached bungalow, with its stunning woodland backdrop, offers a unique opportunity for serene living in a picturesque setting. With its versatile layout, modern finishes, and beautiful outdoor space, this property is perfect for those seeking a peaceful retreat or a family home.

Situated in a sought-after neighbourhood, this bungalow benefits from a prime location. Residents can enjoy the best of both worlds, with easy access to local amenities, schools, and transport links, while still being able to escape to the peaceful surroundings of the adjacent woodland.

## Benefitting from:

- Off Road Parking
- Garage
- Large Lean-To
- Double Glazed
- Gas Central Heating
- Log Burner
- Rear Extension
- Potential to Extend (STPP)
- Council Tax: F
- EPC Rating: D



## Accommodation

**Porch** Composite door to front with feature window and door knocker. Double glazed window to side.

**Entrance Hall** Double glazed window to side. Radiator. Tiled floor. Loft access.

**Bedroom 1** Double glazed bay window to front. Radiator. Carpet.

**Bedroom 2** Double glazed window to front. Built in wardrobe. Radiator. Wood laminate flooring.

**Bedroom 3** Window to side. Radiator. Carpet.

**Bathroom** Fully tiled. Panelled bath with shower over. Low level WC. Vanity sink unit. Chrome heated towel rail. Double glazed window to side.

**Kitchen / Breakfast Room** Range of wall and base units with work surface over. Space for range cooker. Extractor hood. Stainless steel sink and drainer. Locally tiled walls. Wood laminate flooring. Radiator. Double glazed window to rear and side. Sliding door to side accessing lean-to.

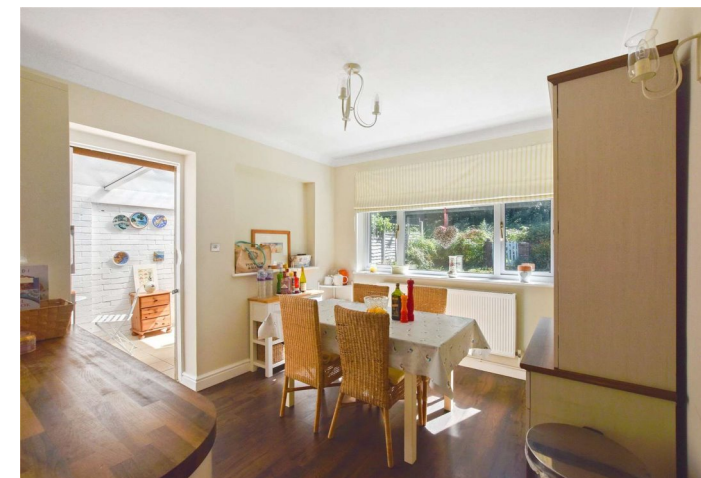
**Living Room** Double glazed window to side x2. Feature brick chimney breast with log burner. Wood laminate flooring.

**Dining Room** Dual aspect double glazed windows - side and rear. Radiator. Wood laminate flooring.

**Front** Mainly laid to lawn. Driveway for 2 cars leading to garage. Mature flowering shrubs and bushes. Patio area to side. Potential to create more off road parking.

**Garden** Mainly laid to lawn. Patio area. Mature shrubs and bushes in border. Gate out onto woodland.

**Lean-To** Double glazed French doors to garden.





Power and lighting. Tiled floor. Plumbed for washing machine. Wall mounted boiler. Access to garage.

**Garage** Single garage with up and over door. Power and lighting. Door to rear accessing lean-to.

### Additional Information

Joydens Wood is an 'urban village' located between Bexley and Wilmington, with a tranquil woodland managed by the Woodland Trust at its heart. The woodland spans an impressive 333 acres, and is home to a variety of trees, plants, wooden sculptures and remains dating back to Roman times.

Furthermore, Joydens Wood has a selection of popular primary schools and provides convenient access to both Wilmington Grammar schools. Local family-run businesses include a post office, a newsagents, a dry cleaners, a launderette and a butchers.

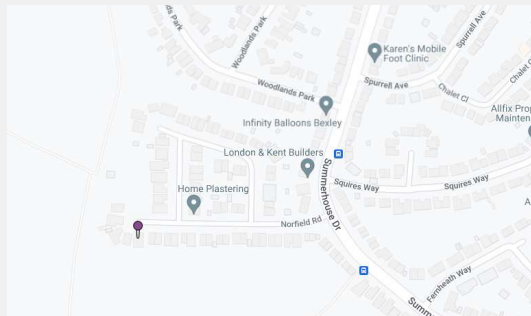




## Important Notice

These particulars do not form part of an offer or contract and must not be relied upon as statements or representation of fact. Any areas, measurements, journey times or distances are approximate. The text, images, photographs and plans are for guidance only and are not necessarily comprehensive. It should not be assumed that the property has all necessary planning, building regulation or other consents and we have not tested any services, equipment or facilities. References to tenure are based on information supplied by the seller. Buyer should verify all information themselves by inspection or otherwise prior to a legal commitment to purchase. Photos and images are subject to copyright.

## Location



**FOR MORE INFORMATION  
CONTACT US TODAY.**

Kevin Wooder - Partner

01322 559900

Robinson Jackson  
77 Bexley High Street,  
Bexley,  
Kent DA5 1JX

[bexley@robinson-jackson.com](mailto:bexley@robinson-jackson.com)

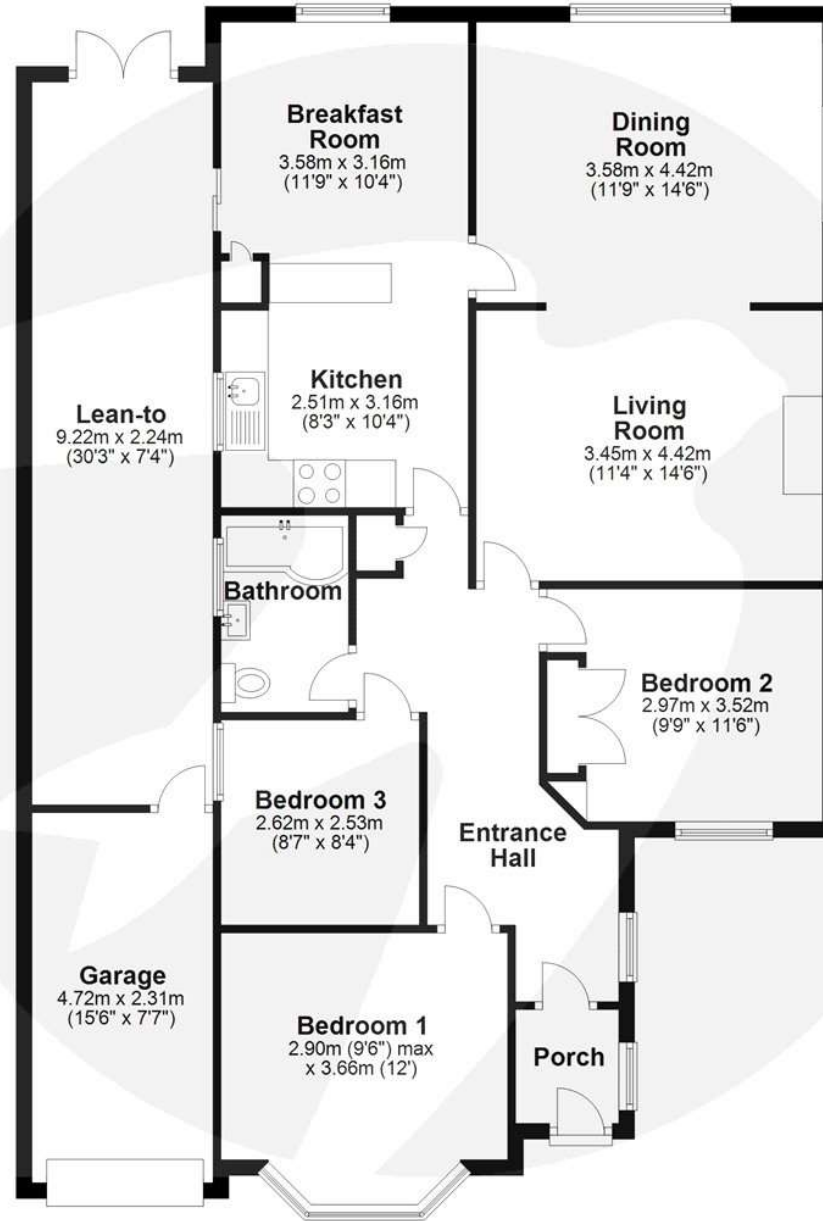
SALES | MORTGAGES | LEGALS

**ROBINSON-JACKSON**



## Floor Plan

Approx. 133.1 sq. metres (1432.5 sq. feet)



Total area: approx. 133.1 sq. metres (1432.5 sq. feet)

Please note that this is for illustration purposes only and should not be used as an exact representation of the property. All measurements are approximate.  
Plan produced using PlanUp.

