



Lansdowne Avenue | Maidstone, Kent, ME15 9DN



Offers in excess of £325,000 Freehold

**ROBINSON MICHAEL & JACKSON**  
Our service will *move* you



## Lansdowne Avenue, Maidstone

This charming property offers three generously sized double bedrooms, each with ample wardrobe space. Downstairs has an abundance of natural sunlight throughout. Chain free.

### Property Features

- Council Tax: C
- EPC Rating: C
- Three double bedroom family home
- Family bathroom & separate W/C
- Landscaped private rear garden
- Chain free
- Spacious accommodation
- Fantastic schools within walking distance
- Excellent transport links





## Interior

**Entrance Hall** Stairs leading up

**Lounge** 3.8m x 3.9m (12'6" x 12'10") Window to the rear, spacious room, open planned with dining room

**Dining Room** 3.4m x 2.9m (11'2" x 9'6") Double doors leading into the garden, leads through to the kitchen

**Kitchen** 3.4m x 3.05m (11'2" x 10') Window to the front, space for washing machine, dishwasher and fridge freezer

**Utility Room** 2.51m x 2.26m (8'3" x 7'5") Door leading out, leads off of kitchen

**WC** WC, Window to side & basin

**Brick Store** 1.9m x 3.05m (6'3" x 10') Window to the rear, located in the garden

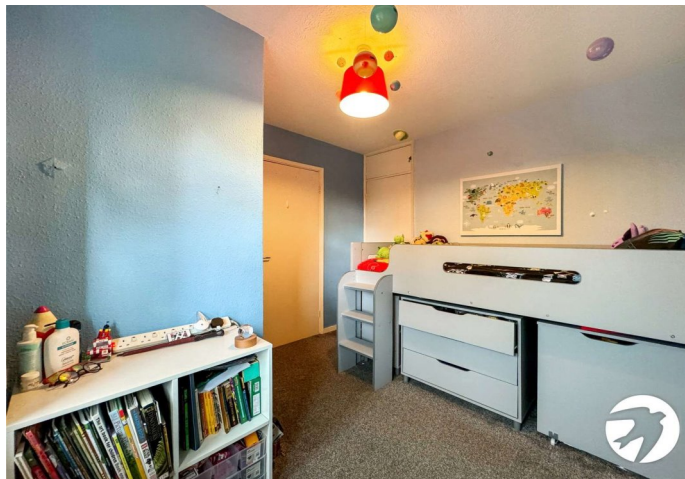
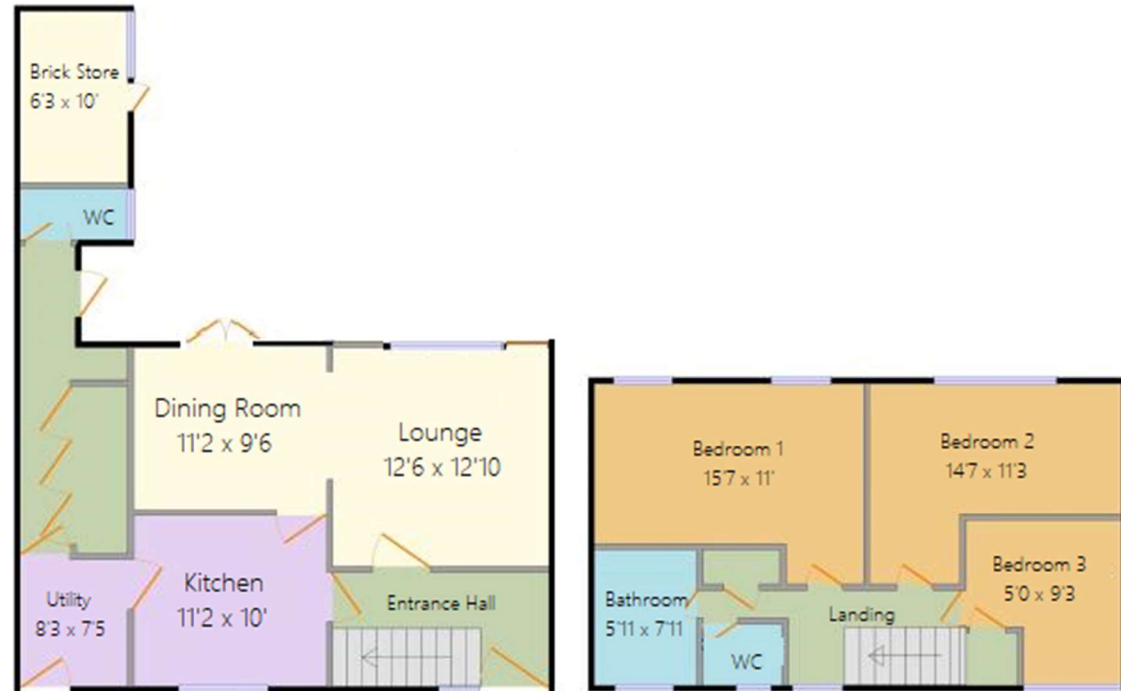
**Bedroom 1** 4.75m x 3.35m (15'7" x 11') Window to the rear, double bedroom

**Bedroom 2** 4.45m x 3.43m (14'7" x 11'3") Window to the rear, double bedroom

**Bedroom 3** 1.52m x 2.95m (5' x 9'8") Window to the front

**WC** Window to the front, WC

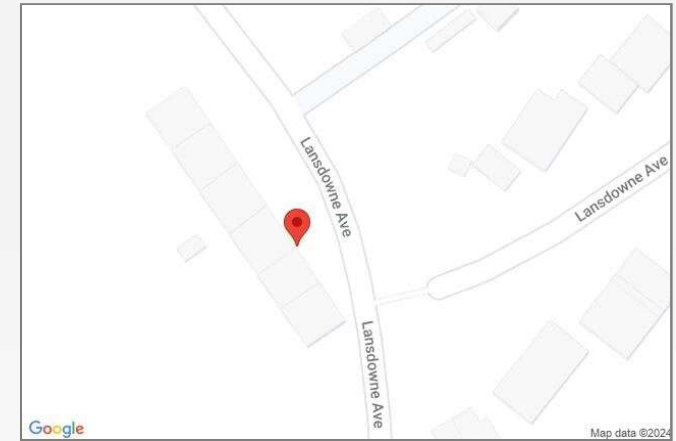
**Bathroom** 1.8m x 2.41m (5'11" x 7'11") Window to the front, shower over bath, basin





## Property Location

Lansdowne Avenue, Maidstone, Kent, ME15 9DN



 Scan for the latest properties...

 Follow us on **facebook** for early access to new properties for sale.



**FOR MORE INFORMATION  
CONTACT US TODAY.**

01622 476666  
Robinson Michael & Jackson  
15A King Street  
Maidstone,  
Kent ME14 1BA  
maidstone@robinson-jackson.com



These particulars do not form part of an offer or contract and must not be relied upon as statements or representation of fact. Any areas, measurements, journey times or distances are approximate. The text, images, photographs and plans are for guidance only and are not necessarily comprehensive. It should not be assumed that the property has all necessary planning, building regulation or other consents and we have not tested any services, equipment or facilities. References to tenure are based on information supplied by the seller. Buyer should verify all information themselves by inspection or otherwise prior to a legal commitment to purchase. Photos and images are subject to copyright.