



The Green | Darenth Village Park, Dartford, DA2 6JR



Guide Price £600,000 to £625,000

Freehold

ROBINSON-JACKSON
Our service will *move* you

The Green, Darenth Village Park

Situated on a private road of just 5 detached houses and located on the popular Darenth Village Park Development Robinson Jackson are delighted to market this impressive three bedroom home. Must view.

Property Features

- Council Tax: E
- EPC Rating: C
- Very Well Maintained Detached Home
- En-suite Shower Room To Master Bedroom
- Walk In Wardrobe To Bedroom Two
- Four Reception Areas
- Located On A Private Road
- Situated Within Darenth Country Park



Interior

Entrance Hall: Frosted double glazed entrance door. Coved ceiling. Radiator. Wood effect laminate flooring. Carpeted stairs to first floor.

Study: Georgian style double glazed bay window to front. Coved ceiling. Radiator. Wood effect flooring.

Playroom: Georgian style double glazed window to front. Coved ceiling. Radiator. Wood effect flooring.

Ground Floor WC: Frosted double glazed window to side. Coved ceiling. Low level WC. Pedestal wash hand basin. Radiator. Wood effect flooring.

Living Room: Georgian style double glazed window to rear. Coved ceiling. Radiator. Carpet. Under stairs storage cupboard.

Kitchen Diner: Double glazed French doors to garden. Georgian style double glazed window to rear. Georgian style double glazed window to side. Coved ceiling. Matching range of wall and base units. Hardwood complimentary work surfaces. Built in dishwasher. Space for fridge freezer. Range cooker with 6 gas burner hob. Stainless steel cooker hood. Tiled floor with under floor heating.

Utility Room: Double glazed door leading to the garden. Boiler. Plumbing for washing machine.

Landing: Access to loft. Coved ceiling. Radiator. Carpet. Built in storage cupboard.

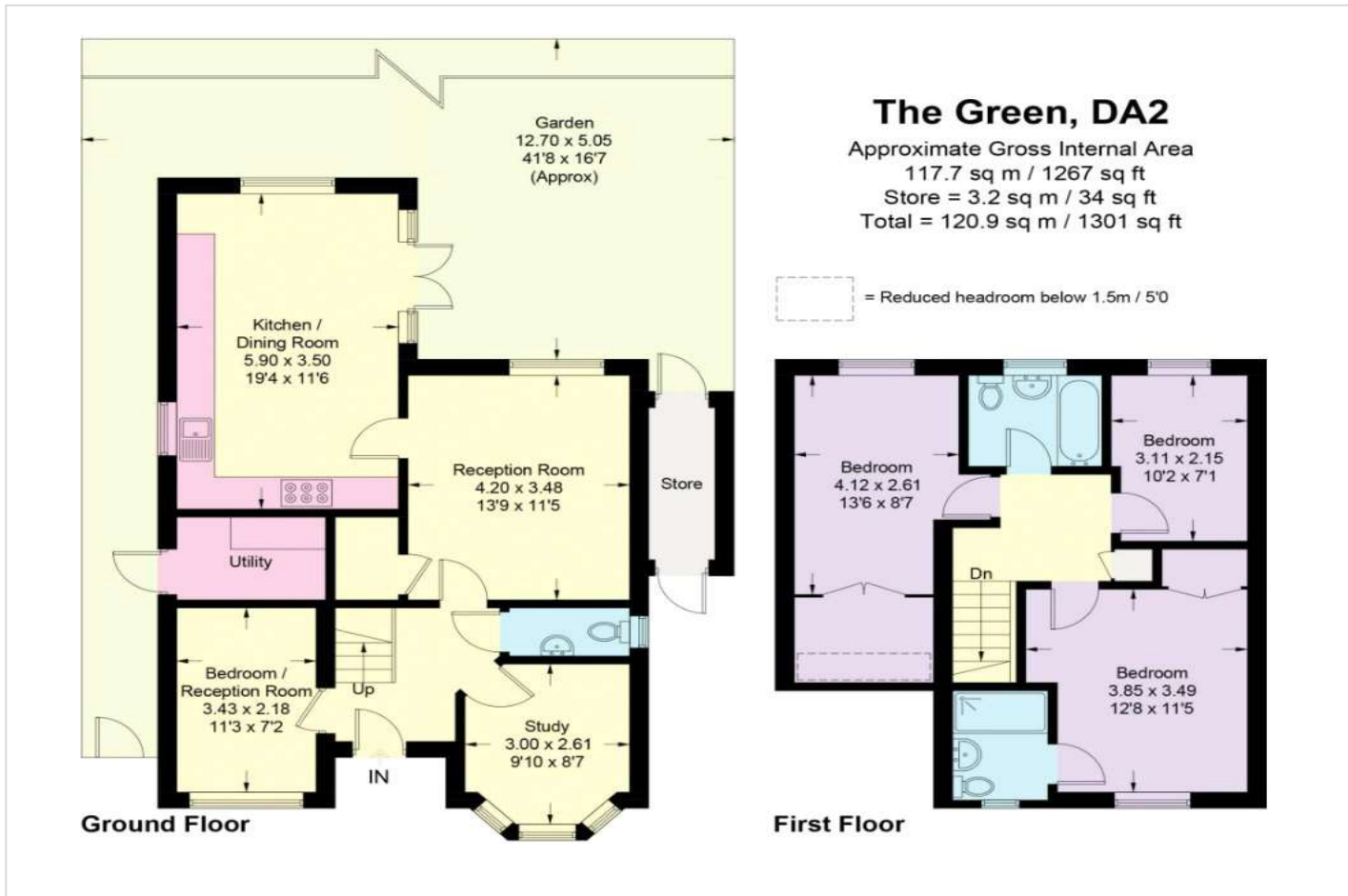
Bedroom One: Georgian style double glazed window to front. Coved ceiling. Radiator. Carpet. Door to en-suite. Built in wardrobe.

En-suite: Frosted Georgian style double glazed window to front. Extractor fan. Low level WC. Pedestal wash hand basin. Tiled double shower cubicle. Part tiled walls. Tiled floor. Stainless steel heated towel rail.

Bedroom Two: Georgian style double glazed window to rear. Coved ceiling. Radiator. Carpet. Double doors to walk in wardrobe.

Bedroom Three: Georgian style double glazed window to rear. Coved ceiling. Radiator. Carpet.

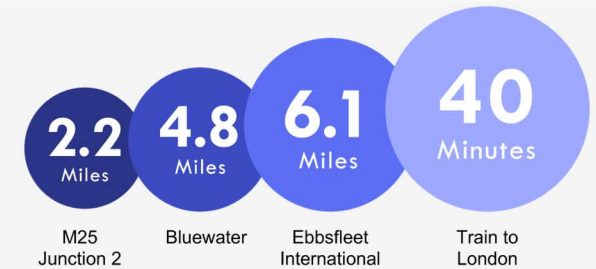
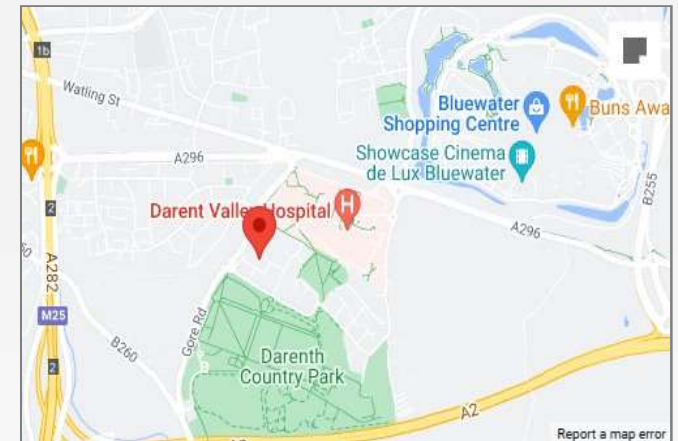
Bathroom: Frosted double glazed Georgian style window to rear. Extractor fan. Part tiled walls. Low level WC. Pedestal wash hand basin. Panel bath with shower attachment. Stainless steel heated towel rail. Tiled floor.





Property Location

The Green, Darent Village Park, Dartford, DA2 6JR



*All distances from branch postcode. Train time from nearest station.

Exterior

Front Garden: Block paved driveway providing off street parking.
Flower beds. Side pedestrian access. Storm porch. Laid to lawn.

Rear Garden: Approx 36ft. Patio area. Laid to lawn. Shingled area.
Shed. Side pedestrian access. Outside tap. Outside power point.
Cupboard housing gas and electric meters.

Parking: Off street parking to front.

Additional Information

Council Tax - Dartford Band E

The garden is North West facing.

The property measures 106 square meters.

The boiler is located in the utility room.

The owner has found another property to move to.

There is a development charge payable of £120 per annum.

**FOR MORE INFORMATION
CONTACT US TODAY.**

01322 281281

Robinson Jackson
22 Market Street,
Dartford,
Kent DA1 1EZ

dartford@robinson-jackson.com

