



Anerley Park | London, SE20 8NS

2 1 1

Guide Price £325,000-£350,000
Leasehold

ROBINSON-JACKSON
Our service will *move* you

Anerley Park, London

Fantastic third floor modern purpose built flat with two double bedrooms, long lease, pleasant communal garden, and double glazing set within a sought after location and within walking distance of Penge West Station, conveniently located for High Street and Crystal Palace Park

Property Features

- Council Tax: B
- EPC Rating: C
- Double glazing
- Central heating
- Third floor
- Long lease
- Leasehold
- High specification
- Penge West Station



Interior

Communal Entrance Glazed communal entrance door, stairs to third floor.

Entrance Hall Wooden entrance door, radiator, laminate flooring.

Lounge Double glazed window to front, radiator, coal effect gas fire with tiled insert and wooden surround, carpet.

Kitchen Opaque double glazed door to balcony, opaque double glazed window to rear, range of fitted high gloss wall and base units with work surface over, one and a half bowl stainless steel sink unit with mixer tap, "Neff" oven, "Neff" hob and extractor to remain, plumbing for washing machine & dishwasher, cupboard housing wall mounted boiler, tiled splash back, laminate flooring, spotlights.

Bedroom One Double glazed window to rear, radiator, carpet.

Bedroom Two Double glazed window to front., radiator, carpet.

Bathroom Opaque double glazed window to rear, three piece bathroom suite comprising of: panelled bath with mixer tap and shower attachment, pedestal wash hand basin with mixer tap and low level wc, heated towel rail, tiled flooring, tiled walls.

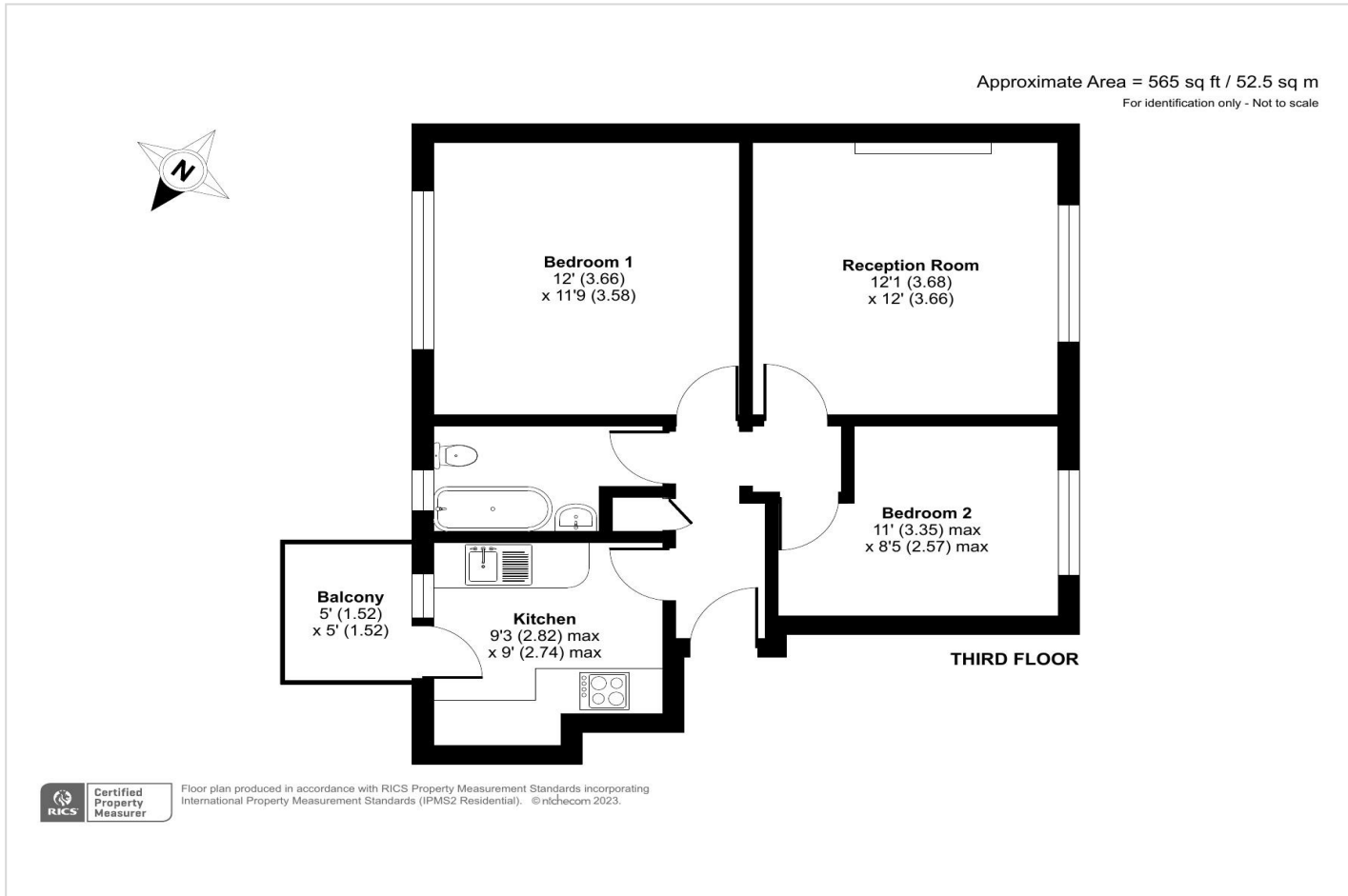
Exterior

Balcony Great views overlooking London.

Leasehold Information

Time remaining on lease: Approx. 160 years

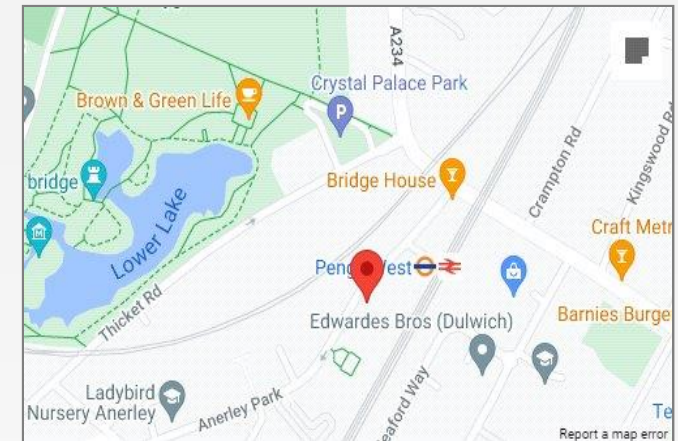
Service Charge: £1458 Per annum





Property Location

Anerley Park, London, SE20 8NS



Additional Information

Double glazing

Central heating

Third floor

Long lease

Leasehold

High specification

Penge West Station

Conveniently located for High Street and Crystal Palace Park

**FOR MORE INFORMATION
CONTACT US TODAY.**

020 8776 6660

Robinson Jackson
256 Kirkdale,
Sydenham,
London SE26 4NL

sydenham@robinson-jackson.com

