



Church Road | Grafty Green, Maidstone, ME17 2BA

 2  2  1

Offers Over £425,000 Freehold

**ROBINSON MICHAEL & JACKSON**  
Our service will *move* you

## Church Road, Grafty Green

Introducing this immaculately designed property, constructed just within the past two years, and nestled in the heart of the charming Grafty Green village.

### Property Features

- Council Tax: E
- EPC Rating: C
- Two double bedrooms
- Open plan living, dining area
- Two bathrooms
- Popular village location



## Interior

**Entrance Hall** Stairs leading up, leads through into property

**Lounge** 5.72m x 4.24m (18'9" x 13'11") Bi-fold doors to the rear, window to the side, open planned with the dining room

**Dining Room** 2.95m x 2.4m (9'8" x 7'10") Window to the rear, open planned with lounge

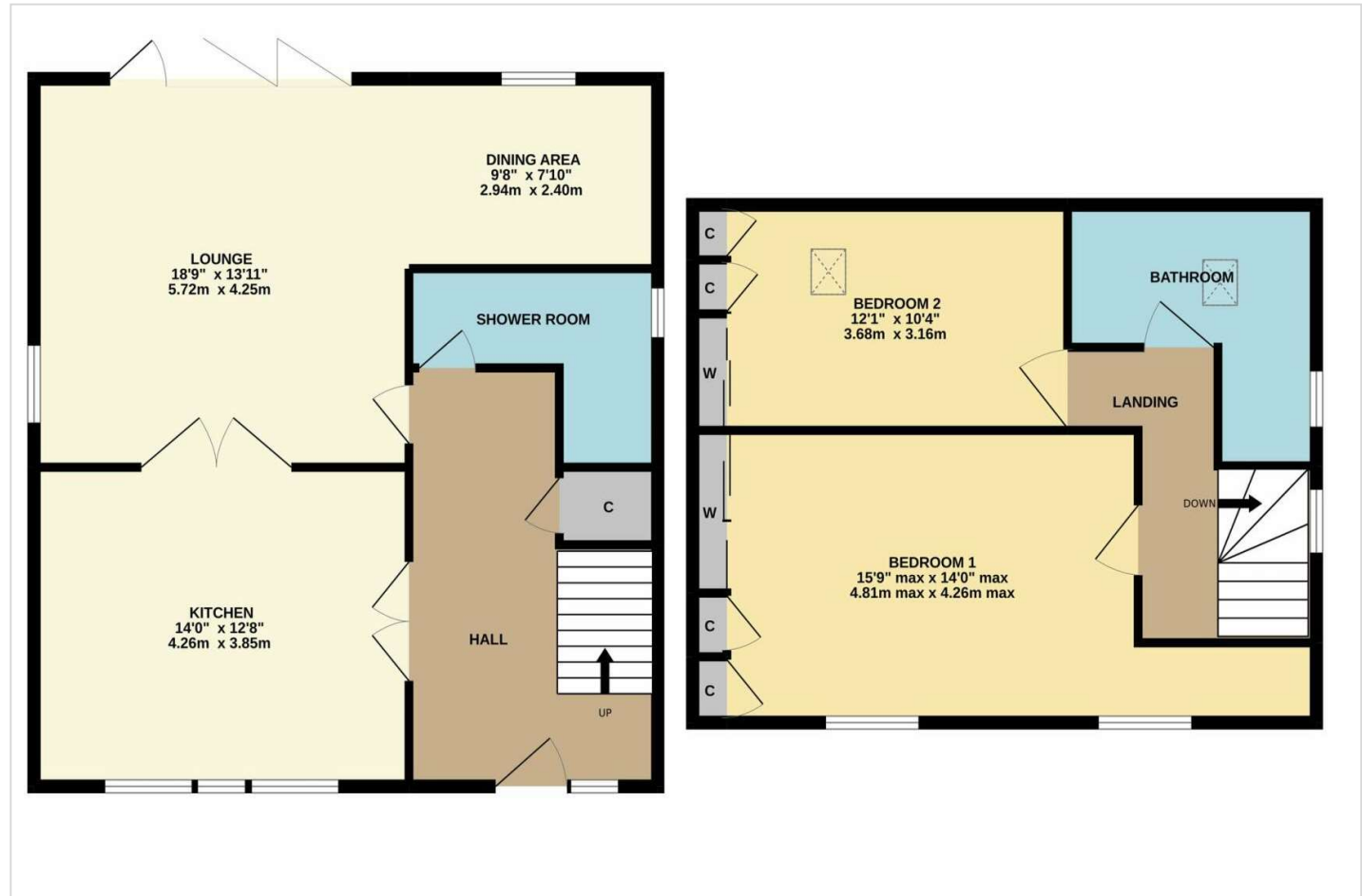
**Kitchen** 4.27m x 3.86m (14' x 12'8") Windows to the front, integrated appliances, double doors to the hallway, leads through to the lounge

**Shower Room** Located on ground floor, walk in shower, basin & WC

**Bedroom 1** 4.8m x 4.27m (15'9" x 14') Windows to the front, built in wardrobe, two storage cupboards, spacious bedroom

**Bedroom 2** 3.68m x 3.15m (12'1" x 10'4") Windows to the rear, built in wardrobe, two storage cupboards, spacious bedroom, Velux window

**Bathroom** Velux window, shower over bath, walk in shower, bath, heated towel rail, basin & WC





## Property Location

Church Road, Grafty Green, Maidstone, ME17 2BA



**READY TO MOVE?**  
Scan to instruct us

**FOR MORE INFORMATION  
CONTACT US TODAY.**

01622 476666  
Robinson Michael & Jackson  
15A King Street  
Maidstone,  
Kent ME14 1BA  
maidstone@robinson-jackson.com



These particulars do not form part of an offer or contract and must not be relied upon as statements or representation of fact. Any areas, measurements, journey times or distances are approximate. The text, images, photographs and plans are for guidance only and are not necessarily comprehensive. It should not be assumed that the property has all necessary planning, building regulation or other consents and we have not tested any services, equipment or facilities. References to tenure are based on information supplied by the seller. Buyer should verify all information themselves by inspection or otherwise prior to a legal commitment to purchase. Photos and images are subject to copyright.