



Highwood Close

Higham | Kent | ME3 7BQ



Highwood Close

Higham, Kent, ME3 7BQ

Guide Price £475,000-£500,000

Freehold

This spacious three bedroom extended semi detached house with garage and drive for 5 cars offers modern living at its finest in a sought after village location.

Benefitting from:

- Lounge & Separate Dining Room
- 23'6 x 10'10 Fully Fitted Kitchen
- Ground Floor 3rd Bedroom/Office
- Ground Floor Cloakroom
- Four Piece First Floor Bathroom
- Georgian Style Double Glazing
- Gas Central Heating
- Quiet Cul-De-Sac
- Viewing Strongly Recommended
- EPC Rating: C



Accommodation

Lounge 4.98m x 15;4 (16'4" x 15;4) Georgian style double glazed bay window to front. Carpet. Radiator. Inset spotlights.

Entrance Hall 2.03m x 1.55m (6'8" x 5'1") Entrance door. Georgian style double glazed window to side. Carpet. Staircase to first floor.

Lounge 4.98m x 4.67m (16'4" x 15'4") Georgian style double glazed bay window to front. Carpet. Radiator. Inset spotlights.

Study/Bedroom 3 (Ground Floor) 3.15m x 2.5m (10'4" x 8'2") Georgian style double glazed window to side. Laminate wood flooring. Door to Ground Floor Cloakroom

Ground Floor Cloakroom 2.46m x 2;3 (8'1" x 2;3) Low level w.c Inset spotlights. Ceiling fan. Plumbing for shower.

Dining Room 3.94m x 3.3m (12'11" x 10'10") Modern fitted wall dresser and base units. Worktops. Radiator. Laminate wood flooring. Understairs cupboards. Inset spotlights Arch to Kitchen/Breakfast Room

Kitchen/Breakfast Room 7.16m x 3.3m (23'6" x 10'10") Georgian style double glazed window to side. Georgian style double glazed window to rear. Georgian style double glazed door to garden. Comprehensive range of modern fitted wall and base units. Breakfast island with base units and inset wine fridge. Integrated fridge, Integrated freezer. Integrated dishwasher. Built in washing machine and tumble dryer. Built in twin ovens, 5 ring hob and extractor. Tiled splashbacks. Laminate wood flooring. Inset spotlights.

Landing Carpet. Inset spotlights. Access to loft.

Bedroom 1 3.84 (12'7")m x 2.87 (9'5")m plus door recess Georgian style double glazed window to front. Carpet. Radiator. Door to walk in wardrobe (5'7 x 3'4)

Bedroom 2 4.57m x 2.46m (15' x 8'1") Georgian style double glazed windows to side and rear. Carpet. Radiator. Built in cupboard.

Bathroom 2.62m x 2.4m (8'7" x 7'10") Georgian style double





glazed window to rear. Modern suite comprising panelled bath with mixer tap and shower attachment. Vanity wash hand basin. Low level w.c. Double walk in shower cubicle. Inset spotlights. Heated towel rail.

Exterior

Front Gardens. Laid to lawn to front and side

Rear Garden. Approx 45'. Paved patio area. Laid to lawn. Pear tree. Outside security lights. Rear gate leading to.

Semi Detached Garage: 16'7 x 8'4. Double opening doors. Driveway to rear for 5 cars.





Important Notice

These particulars do not form part of an offer or contract and must not be relied upon as statements or representation of fact. Any areas, measurements, journey times or distances are approximate. The text, images, photographs and plans are for guidance only and are not necessarily comprehensive. It should not be assumed that the property has all necessary planning, building regulation or other consents and we have not tested any services, equipment or facilities. References to tenure are based on information supplied by the seller. Buyer should verify all information themselves by inspection or otherwise prior to a legal commitment to purchase. Photos and images are subject to copyright.

Location



(All distances & times are approximates)

FOR MORE INFORMATION CONTACT US TODAY.

Andy Plaistowe - Branch Partner

01474 333111

Robinson Michael & Jackson
21A & B King Street,
Gravesend,
Kent DA12 2EB

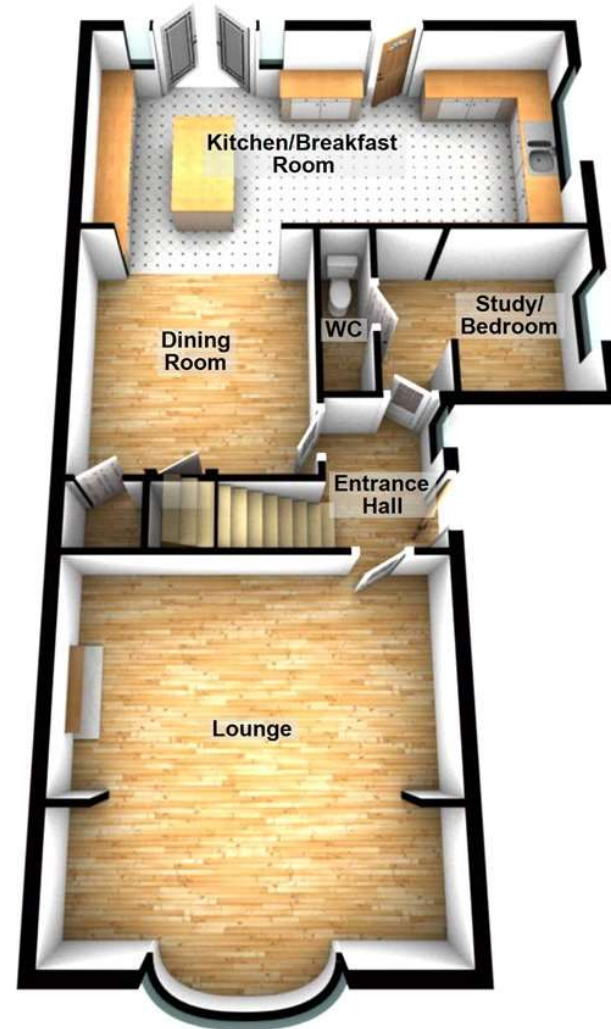
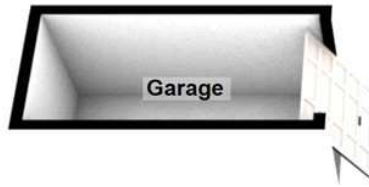
gravesend@robinson-jackson.com

SALES | MORTGAGES | LEGALS

ROBINSON MICHAEL & JACKSON

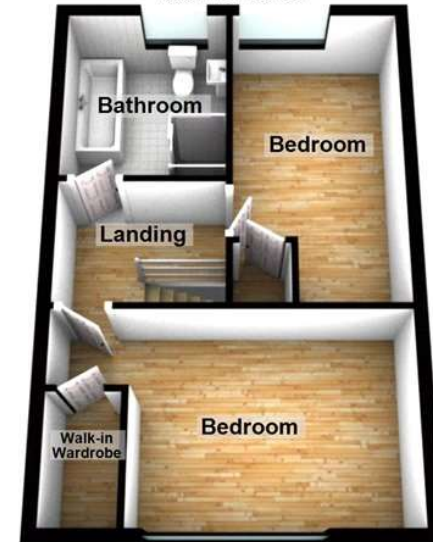
Ground Floor

Approx. 953.6 sq. feet



First Floor

Approx. 409.4 sq. feet



Total area: approx. 1363.0 sq. feet

Please be advised this plan is offered for marketing purposes only. It can not be relied upon for exact or precise measurements, angles, window or door openings. Whilst every effort is made to ensure the accuracy the company or provider accepts no responsibility for the content.
Plan produced using PlanUp.

