



High Road | Dartford, Kent, DA2 7BN



Guide Price £575,000 to £600,000

Freehold

ROBINSON-JACKSON
Our service will *move* you

High Road, Dartford

Robinson Jackson are pleased to offer this substantial extended family home that offers an abundance of space and needs to be viewed to be fully appreciated.

Property Features

- Council Tax: E
- EPC Rating: D
- Semi Detached Family Home
- Off Street Parking
- Ideal For Growing Family
- No Forward Chain
- Popular Village Location
- Catchment For Wilmington Schools



Interior

Porch Double glazed double doors and windows to front fitted carpet.

Hallway Wooden single glazed door to front, Stairs to first floor, Picture rail, Dado rail, under stairs storage cupboard housing boiler, Radiator, Fitted carpet.

Reception Room Double glazed bay window to front, Picture rail, Dado rail, Radiator x 2, Feature gas fireplace, Vinyl flooring.

Dining Room Open plan to kitchen and conservatory, Coved ceiling, Picture rail, Dado rail radiator x 2, Wooden flooring.

Kitchen Double glazed window to rear, Range of fitted wall and base units with complimentary tiled worktops, One and half bowl sink unit with mixer taps, Plumbed for dishwasher, Stainless steel oven with electric hob and extractor over, Tiled splashbacks, Vinyl flooring. Door leading to garage.

Conservatory Double glazed conservatory with side doors giving access to access the rear garden. Radiator, Tiled Flooring.

Utility Room Double glazed window to rear and double glazed door to rear, Range of fitted wall and base units with complimentary worktops, Stainless steel sink and drainer with mixer taps, Tiled flooring, Heated towel radiator,

Landing Split level landing, Access to loft, Picture rail, Dado rail Fitted carpet. Double glazed frosted window to side.

Downstairs WC Low level WC, Wall mounted corner wash hand basin, Extractor, Tiled walls, Tiled floor.

Workshop Double glazed window to front and wooden door to front.

Master bedroom Double glazed leaded light bay window to front, Picture rail, Dado rail, built in wardrobes, Radiator, Fitted carpet.

Bedroom Double glazed leaded light window to rear, Picture rail, Radiator, built in wardrobes with vanity unit including wash had basin. Fitted carpet.

Bedroom Double glazed leaded light window to front, Built in wardrobes, Radiator, Laminate wood flooring.

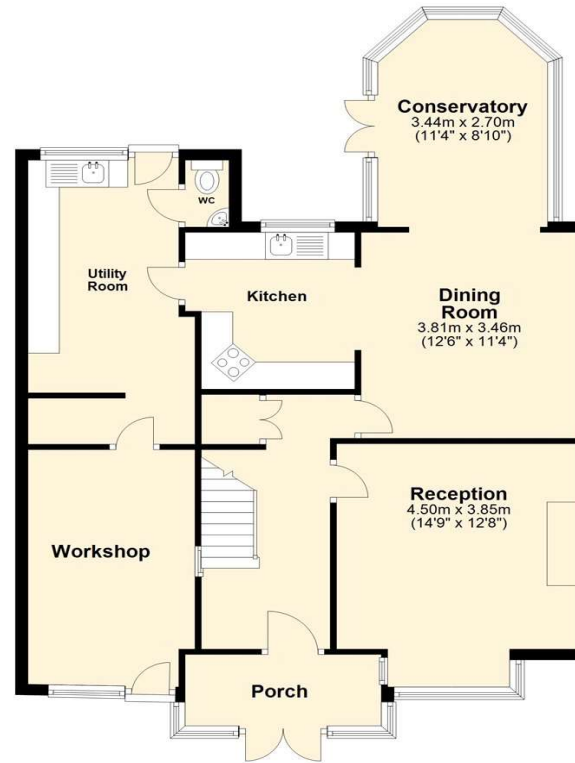
Bedroom Double glazed Leaded Light window rear, Radiator, Built in wardrobes, Fitted carpet.

Bedroom Double glazed window to rear, Picture rail, Radiator, Laminate wood flooring.

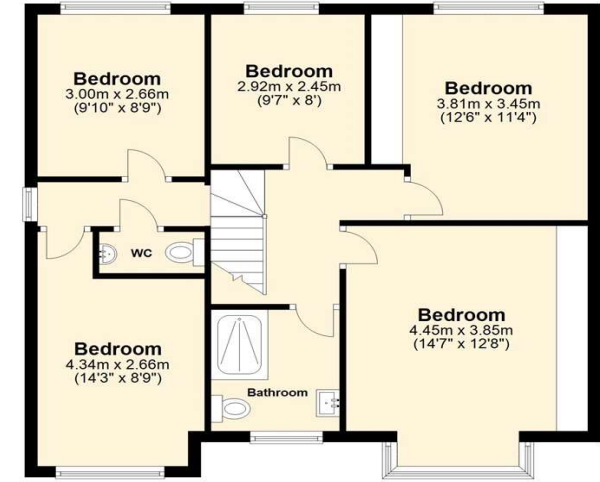
Shower Room Double glazed frosted window to front, Modern shower room comprising of vanity mounted wash hand basin with mono tap, Low level wall hung WC with concealed cistern, Walkin shower with Aqualisa power shower with rainfall head and handheld shower, Glass shower screen, Contemporary tiled splashbacks and tiled floor. Heated towel radiator, extractor fan.

Upstairs Separate WC Low level WC, vanity mounted wash hand basin, Heated towel rail, Tiled walls, Tiled floor, Extractor fan.

Ground Floor
Approx. 89.4 sq. metres (962.3 sq. feet)



First Floor
Approx. 71.0 sq. metres (764.7 sq. feet)



Total area: approx. 160.4 sq. metres (1727.0 sq. feet)





Exterior

Front Garden: Driveway with parking for 3 or more vehicles, Main lawn area with various shrubs plants in borders, outside light.

Rear Garden: Approx 95' Split level block paved patio area with a small pond, the remainder of the garden is mainly laid to lawn with an array of established shrubs and plants, At the far end of the garden you will find a green house, brick built outhouse and wooden storage shed. Outside tap security lighting.

Additional Information

The boiler located in understairs storage cupboard.

The property measures 160.4 square meters.

Property Location

High Road, Dartford, Kent, DA2 7BN



**FOR MORE INFORMATION
CONTACT US TODAY.**

01322 281281

Robinson Jackson
22 Market Street,
Dartford,
Kent DA1 1EZ

dartford@robinson-jackson.com

